

## Product Support

## Part & Model Reference

[Model & Part Search](#)[Videos](#)[Technical Literature](#)[Software](#)[CAD Files](#)[Catalogs](#)[Brochures](#)[Product Warranty](#)[Worldwide Locations](#)[SISTEMA Library](#)

### LCMB P/N 16283

**MULTI-BEAM: Lower Cover**  
 Fits all MULTI-BEAM Sensor Blocks  
 Includes: Four gaskets  
 Also includes: Four stainless steel screws

Contact a Banner Engineer  
 About Your Application

#### Family Overview

#### Overview - Sensors Brackets

- » Using the right bracket ensures optimum performance from your Banner sensors.
- » Stainless steel and reinforced thermoplastic polyester mounts reduce installation time and lower total installed cost.
- » Choice includes angled, through-hole and split-clamp models that mount to a flat surface.
- » Versatile swivel-mount models mount flat and have an adjustable ball to position the sensor at any angle.
- » Custom brackets can be designed for your unique applications.

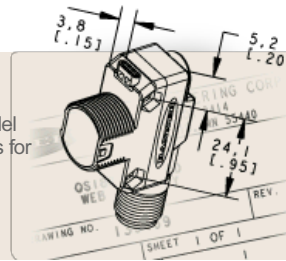
#### Banner Insider eNewsletter

Helpful application information, new product updates, answers to frequently asked questions, and more.

[Subscribe Now »](#)

#### Looking for CAD Files?

Browse by model family or type in your model number to find STEP, IGS, DXF, or PDF files for your project.

[Find them now »](#)

#### WORLDWIDE DISTRIBUTORS

Banner has more than 3,000 distributors—ready to help you. Enter your U.S. city or zip.

[Find international distributors](#)