

# AZ767

## SPDT SUBMINIATURE POWER RELAY



### FEATURES

- Small footprint
- Low cost
- Class B insulation standard
- Epoxy sealed version available
- 10 Amp switching
- UL, CUR file E44211
- VDE Pending

### CONTACTS

<b>Arrangement</b>	SPST (1 Form A) SPDT (1 Form C)
<b>Ratings</b>	Resistive load: Max. switched power: 150 W (SPST-NO) standard 1250 VA (SPST-NO) standard 90 W (SPST-NO) sensitive 750 VA (SPST-NO) sensitive 90 W (SPDT) 750 W (SPDT) Max. switched current: 10 A AC SPST-NO standard 5 A DC SPST-NO standard 3 A AC/DC SPST-NO sensitive 3 A AC/DC SPDT Max. switched voltage: 150* VDC or 380 VAC  *Note: If switching voltage is greater than 30VDC, special precautions must be taken. Please contact the factory.
<b>Rated Load UL, CUR</b>	Form A 10 A at 125 VAC, Res., 30k cycles [1] 10 A at 125 VAC, General Use., 100k cycles [2] 5 A at 250 VAC, General Use, 100k [1][2] 5 A at 30 VDC, Res., 100k cycles [1][2] 300 W at 120 VAC Tungsten [2] 3 A at 250 VAC, General Use, 100k cycles [1][2] sensitive 3 A at 30 VDC, Res., 100k cycles [1][2] - sensitive 5 A at 125 VAC, Res., 100k cycles [1] - sensitive 10 LRA / 1.5 FLA at 120 VAC, 100k cycles [1] 1/10 HP at 125 VAC, 100k cycles [1] 1/16 HP at 250 VAC, 100k cycles [1] 8 A at 250 VAC, General Use, 100k cycles [2] - sensitive high capacity Form C 3 A at 250 VAC, General Use, 100k cycles [1][2] 3 A at 30 VDC, Res., 100k cycles [1][2] [1] silver cadmium oxide [2] silver nickel
<b>Material</b>	Silver cadmium oxide or silver nickel
<b>Resistance</b>	<100 milliohms initially (24 V, 1 A voltage drop method)

### GENERAL DATA

<b>Life Expectancy Mechanical Electrical</b>	Minimum operations 1 x 10 <sup>7</sup> 1 x 10 <sup>5</sup> at 5 A 240 VAC Res.
<b>Operate Time (typical)</b>	8 ms at nominal coil voltage
<b>Release Time (typical)</b>	5 ms at nominal coil voltage (with no coil suppression)
<b>Dielectric Strength (at sea level for 1 min.)</b>	2500 Vrms coil to contact 1000 Vrms between open contacts
<b>Insulation Resistance</b>	1000 megohms min. at 20°C 500 VDC 50% RH
<b>Dropout</b>	Greater than 5% of nominal coil voltage
<b>Ambient Temperature Operating Storage</b>	At nominal coil voltage -40°C (-40°F) to 90°C (194°F), standard -40°C (-40°F) to 105°C (221°F), sensitive -40°C (-40°F) to 130°C (266°F)
<b>Vibration</b>	0.062" DA at 10–50 Hz
<b>Shock</b>	10 g operating, 100 g damage
<b>Enclosure</b>	P.B.T. polyester
<b>Terminals</b>	Tinned copper alloy, P.C.
<b>Max. Solder Temp.</b>	270°C (518°F)
<b>Max. Solder Time</b>	5 seconds
<b>Max. Solvent Temp.</b>	80°C (176°F)
<b>Max. Immersion Time</b>	30 seconds
<b>Weight</b>	6 grams

### COIL

<b>Power At Pickup Voltage (typical)</b>	253 mW standard 113 mW sensitive
<b>Max. Continuous Dissipation Temperature Rise</b>	1.25 W at 20°C (68°F) ambient 41°C (74°F) at nominal coil voltage, standard 22°C (40°F) at nominal coil voltage, sensitive
<b>Temperature</b>	Max. 130°C (266°F)

### NOTES

1. All values at 20°C (68°F).
2. Relay may pull in with less than "Must Operate" value.
3. Specifications subject to change without notice.



**AMERICAN ZETTLER, INC.**

[www.azettler.com](http://www.azettler.com)

75 COLUMBIA • ALISO VIEJO, CA 92656 • PHONE: (949) 831-5000 • FAX: (949) 831-8642 • E-MAIL: SALES@AZETTLER.COM

3/19/10

# AZ767

## RELAY ORDERING DATA

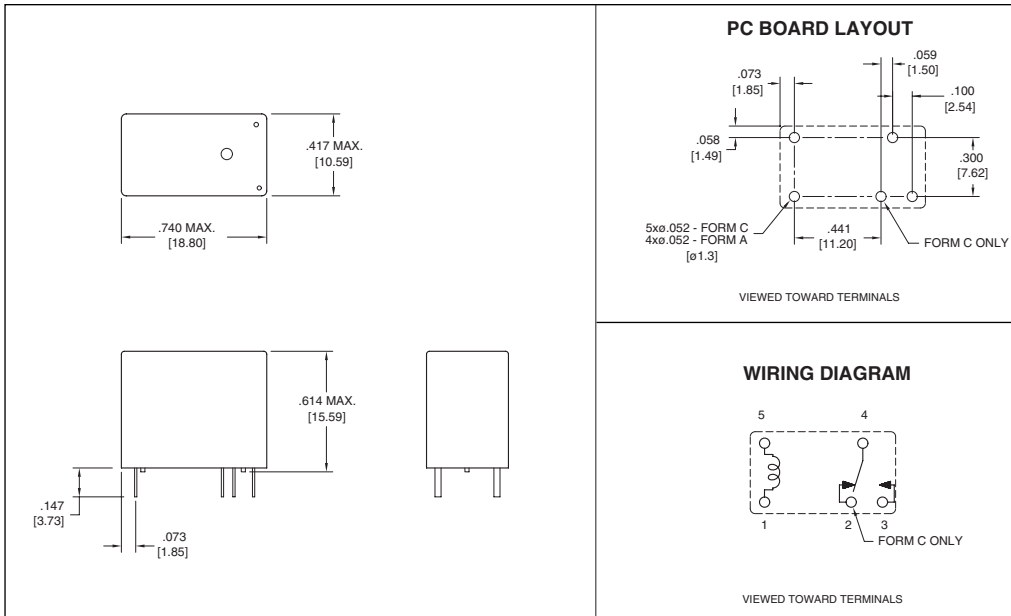
STANDARD RELAYS				ORDER NUMBER*	
COIL SPECIFICATIONS				ORDER NUMBER*	
Nominal Coil VDC	Must Operate VDC	Max. Continuous VDC	Coil Resistance $\pm 10\%$	Form A (SPST)	Form C (SPDT)
3	2.25	5.0	20	AZ767-1A-3D	AZ767-1C-3D
5	3.75	8.3	55	AZ767-1A-5D	AZ767-1C-5D
6	4.5	10.0	80	AZ767-1A-6D	AZ767-1C-6D
9	6.75	15.0	180	AZ767-1A-9D	AZ767-1C-9D
12	9.0	20.0	320	AZ767-1A-12D	AZ767-1C-12D
18	13.5	30.0	720	AZ767-1A-18D	AZ767-1C-18D
24	18.0	40.0	1,280	AZ767-1A-24D	AZ767-1C-24D
48	36.0	80.0	5,120	AZ767-1A-48D	AZ767-1C-48D

\*For silver nickel contacts change "-1A" to "-1AB" or "-1C" to "-1CB". Add suffix "E" for epoxy sealed version. Add suffix "A" for gold plated version.

SENSITIVE RELAYS				
COIL SPECIFICATIONS				ORDER NUMBER*
Nominal Coil VDC	Must Operate VDC	Max. Continuous VDC	Coil Resistance $\pm 10\%$	Form A (SPST)
3	2.25	7.5	45	AZ767-1A-3DS
5	3.75	12.5	125	AZ767-1A-5DS
6	4.5	15.0	180	AZ767-1A-6DS
9	6.75	22.4	400	AZ767-1A-9DS
12	9.0	30.0	720	AZ767-1A-12DS
18	13.5	44.7	1600	AZ767-1A-18DS
24	18.0	59.2	2800	AZ767-1A-24DS

\*For silver nickel contacts change "-1A" to "-1AB". For high capacity silver nickel contacts change "-1A" to "-1ABT". Add suffix "E" for epoxy sealed version. Add suffix "A" for gold plated version.

## MECHANICAL DATA



Dimensions in inches with metric equivalents in parentheses. Tolerance:  $\pm .010$ "



**AMERICAN ZETTLER, INC.**

[www.azettler.com](http://www.azettler.com)

75 COLUMBIA • ALISO VIEJO, CA 92656 • PHONE: (949) 831-5000 • FAX: (949) 831-8642 • E-MAIL: SALES@AZETTLER.COM