

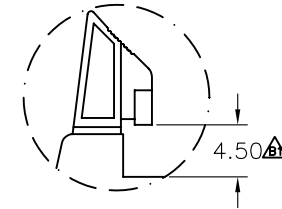
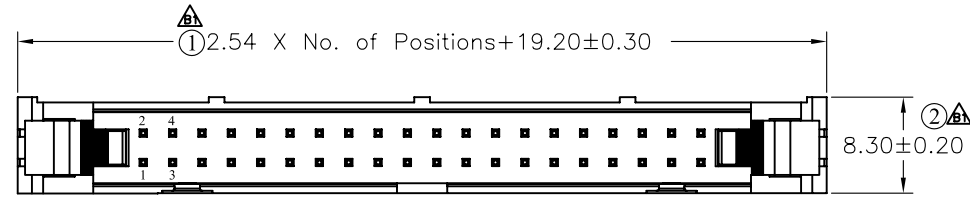
2.54mm (0.100") EJECTOR HEADER

SPECIFICATIONS

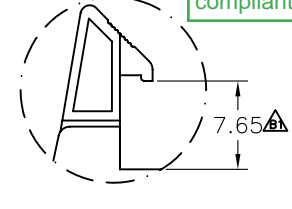
Current Rating: 3AMP
 Withstand Voltage: 1000V AC/minute
 Contact Resistance: 20mΩ Max
 Insulation Resistance: 1000MΩ Min
 Operation Temperature: -40°C to +105°C

Contact Material: Brass
 Contact plating: Au or Sn Over 50u" Ni
 Insulator Material: Polyester (UL94V-0)
 Standard: PBT+30% G. F

REVISION DATA				
ITEM	DESCRIPTION	DATE	REMARK	
B1	① +19.30±0.30	→ +19.20±0.30	05-07-05	
	② 8.30±0.15	→ 8.30±0.20		
	③ 8.50±0.25	→ 7.65±0.25		
	④ 4.30±0.25	→ 4.50±0.25		
	⑤ 4.30±0.25	→ 4.35±0.25		
	⑥ 13.00±0.15	→ 13.30±0.20		
	⑦ 27.80±0.25	→ 27.50±0.25		
	⑧ 0.40±0.25	→ 0.30±0.25		
B2				

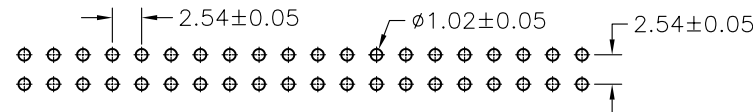
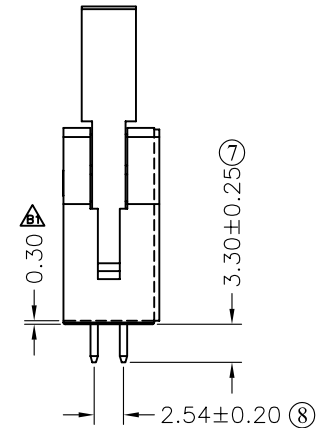
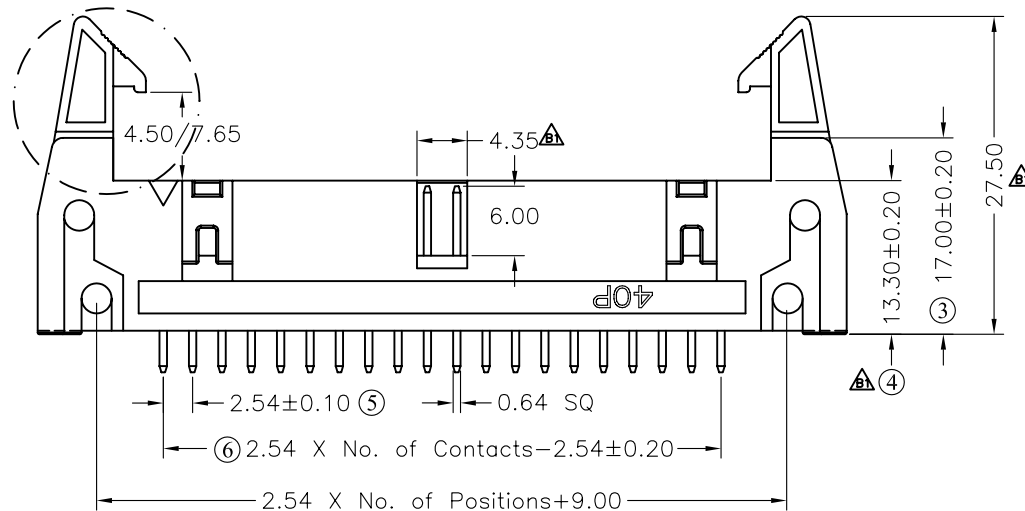


Short Latch



Long Latch

RoHS compliant



Recommended PCB Board Hole Layout

ASSMANN
 Electronics, Inc.

TOLERANCE		DRAWN	PROJECT	UNIT	PART NO	AWHXXG-X2X2-T-R	Issue No	WF-												
X.	± 5°								CHECKED	SCALE	1.5:1	DRAW NO	ASM3210-XXSX01	PAGE	1/1					
.X	± 2°															APPROVE	EDITION	B1	NAME	2.54mm ejector header
.XX	± 1°																			
.XXX	± 0.5°																			
X.	± 0.38																			
.XX	± 0.25																			
.XXX	± 0.12																			