

Sealing boots

UG1006-A

- Prevent dust, sand and water from getting into switches.
- On toggle versions, also prevent ice from blocking lever action
- Compatible with frontal sealing options (K and X408).
- Available in a wide range of colours.
- When necessary, a sealing ring or washer is supplied with the boot.



MATERIALS AND SPECIFICATIONS

- Boot material : neoprene or silicone (see comparative advantages below)
- Nut material : brass, nickel plated or matt black
- Operating temperature :
 - neoprene boots : -20°C to +50°C
 - silicone boots : -40°C to + 85°C

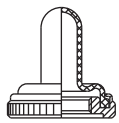
++ : excellent, + : good, - : poor

COMPARATIVE ADVANTAGES	TEMPERATURE RANGE		ELASTICITY	MECHANICAL RESISTANCE
	LOW	HIGH		
Silicone	++	++	++	-
Neoprene	-	+	-	++

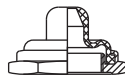
DIFFERENT TYPES OF BOOTS

* Colour options available

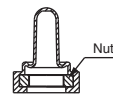
Full-toggle (standard) *



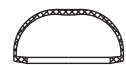
Half-toggle *



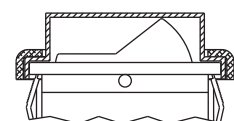
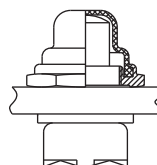
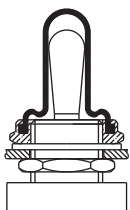
Two-part (no metal parts accessible) *



For double sealing



EXAMPLES OF MOUNTING



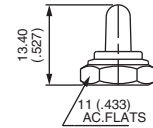
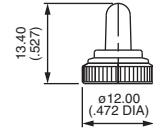
Sealing boots

For toggle switches

For bushing $\varnothing 6 \times 0.75$ (.236 x 0.75) - 5500 series



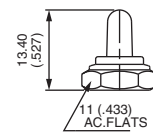
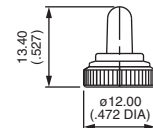
NUT	FULL-TOGGLE SILICONE BOOTS			
	Black	Red	Green	White
Knurled Nickel plated	U1341	U1341-6	U1341-3	U1341-7
Knurled Matt black	U1343	U1343-6	U1343-3	U1343-7
Hex Nickel plated	U1302	U1302-6	U1302-3	U1302-7
Hex Matt black	U1304	U1304-6	U1304-3	U1304-7



For bushing $\varnothing 6,35-40NS$ (1/4-40UNS) - 5000 and 11000 series



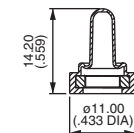
NUT	FULL-TOGGLE SILICONE BOOTS			
	Black	Red	Green	White
Knurled Nickel plated	U1331	U1331-6	U1331-3	U1331-7
Knurled Matt black	U1333	U1333-6	U1333-3	U1333-7
Hex Nickel plated	U1229	U1229-6	U1229-3	U1229-7
Hex Matt black	U1231	U1231-6	U1231-3	U1231-7



For bushing $\varnothing 6,35-40NS$ (1/4-40UNS) - 5000 and 11000 series



BOOTS SUPPLIED AS 2 SEPARATE PARTS				
NEOPRENE	SILICONE			
	Black	Red	Green	White
	U5149	U5149-6	U5149-3	U5149-7

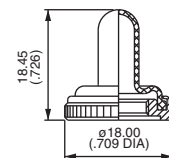


Once the boot is mounted onto the panel, no switch metal part is accessible any more.

For bushing $\varnothing 10 \times 0.75$ (.393 x 0.75) - 10600 series



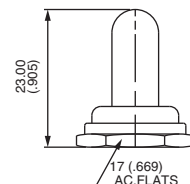
KNURLED NUT	FULL-TOGGLE SILICONE BOOTS			
	Black	Red	Green	White
Nickel plated	U1612	U1612-6	U1612-3	U1612-7
Matt black	U1614	U1614-6	U1614-3	U1614-7



For bushing $\varnothing 11,9-32 NS$ (15/32-32NS) - 12000, 5000M, 3500 and 6000 series



HEX NUT	FULL-TOGGLE SILICONE BOOTS			
	Black	Red	Green	White
Nickel plated	U1031	U1031-6	U1031-3	U1031-7
Matt black	U1024	U1024-6	U1024-3	-



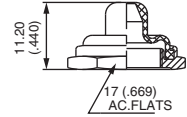
Sealing boots

For toggle switches

For bushing Ø 11,9-32 NS (15/32-32NS) - 12000, 3500 and 6000 series



HEX NUT	HALF-TOGGLE SILICONE BOOTS			
	Black	Red	Green	White
Nickel plated	U1600	U1600-6	U1600-3	U1600-7
Matt black	U1602	U1602-6	U1602-3	-

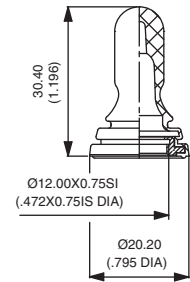


For bushing Ø 11,9-32 NS (15/32-32NS) - 12000, 3500, 3600 and 600 series



New!

FULL-TOGGLE BLACK NEOPRENE BOOT
U2252

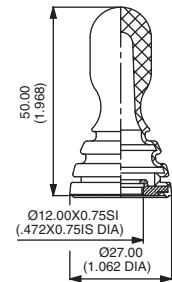


For bushing Ø12 x 0.75 SI (.472x.075 IS) - 600 and 3600 series with X2243 long lever



New!

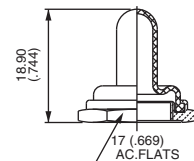
FULL-TOGGLE BLACK NEOPRENE BOOT
U2197



For bushing Ø12 x 0.75 SI (.472x.075 IS) - 4450, 4650 and 1600 series



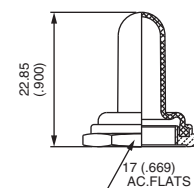
HEX NUT	FULL-TOGGLE BLACK NEOPRENE BOOTS
Nickel plated	U09
Matt black	U223



For bushing Ø 12 x 0.75 SI (.472x.075 IS) - 600H, 660, 1000, 1500 and 3600



HEX NUT	FULL-TOGGLE SILICONE BOOTS			
	Black	Red	Green	White
Nickel plated	U1565	U1565-6	U1565-3	U1565-7
Matt black	U1567	U1567-6	U1567-3	-
	FULL-TOGGLE BLACK NEOPRENE BOOTS			
Nickel plated	U851			
Matt black	U853			



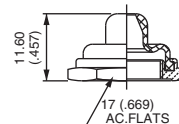
Sealing boots

For toggle switches or pushbutton switches

For bushing $\varnothing 12 \times 0.75$ SI (.472x.075 IS) - 600H, 660, 1000 and 3600 series



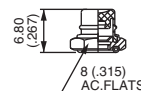
HEX NUT	HALF-TOGGLE SILICONE BOOTS			
	Black	Red	Green	White
Nickel plated	U1151	U1151-6	U1151-3	U1151-7
Matt black	U1153	U1153-6	U1153-3	-
	HALF-TOGGLE BLACK NEOPRENE BOOTS			
Nickel plated	U598			
Matt black	U600			



For bushing $\varnothing 4 \times 0.70$ (.157 x 0.70) - 9500 series



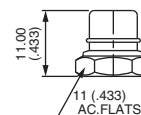
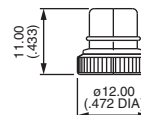
HEX NUT	PUSHBUTTON SILICONE BOOTS			
	Black	Red	Green	White
Nickel plated	U1829	U1829-6	U1829-3	U1829-7
Matt black	U1831	U1831-6	U1831-3	U1831-7



For bushing $\varnothing 6,35-40NS$ (1/4-40UNS) - 18000, 9000 and 13000 series



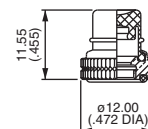
NUT	PUSHBUTTON SILICONE BOOTS			
	Black	Red	Green	White
Knurled Nickel plated	U1401	U1401-6	U1401-3	U1401-7
Knurled Matt black	U1403	U1403-6	U1403-3	U1403-7
Hex Nickel plated	U1318	U1318-6	U1318-3	U1318-7
Hex Matt black	U1320	U1320-6	U1320-3	U1320-7



For bushing $\varnothing 6,35-40NS$ (1/4-40 UNS) - 8000 series



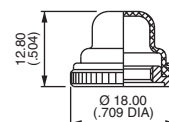
KNURLED NUT	PUSHBUTTON SILICONE BOOTS			
	Black	Red	Green	White
Nickel plated	U4301	U4301-6	U4301-3	U4301-7



For bushing $\varnothing 10 \times 0.75$ (.393 x 0.75) - 10400 series



KNURLED NUT	PUSHBUTTON SILICONE BOOTS			
	Black	Red	Green	White
Nickel plated	U1624	U1624-6	U1624-3	U1624-7
Matt black	U1626	U1626-6	U1626-3	U1626-7



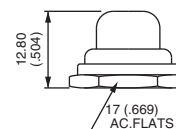
Sealing boots

For pushbutton switches

For bushing \varnothing 11,9-32 NS (15/32-32UNS) - 13000X778, 13000X768 and 8000-6X934 series



HEX NUT	PUSHBUTTON SILICONE BOOTS			
	Black	Red	Green	White
Nickel plated	U589	U589-6	U589-3	U589-7
Matt black	U590	U590-6	U590-3	-

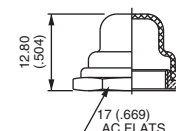


For long plunger (-9) care should be taken over the panel thickness.

For bushing \varnothing 12 x 0.75 SI (.472x.075 IS) - 1200, 4700 and 4800 series



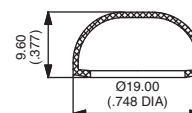
HEX NUT	PUSHBUTTON SILICONE BOOTS			
	Black	Red	Green	White
Nickel plated	U1654	U1654-6	U1654-3	U1654-7
Matt black	U1656	U1656-6	U1656-3	-
	PUSHBUTTON BLACK NEOPRENE BOOTS			
Nickel plated	U31			
Matt black	U225			
Chrome plated	U224			



For double sealing on IP and IB-IS series



SILICONE BOOT	
Transparent	U5125
Blue	U5125-1
Black	U5125-2
Red	U5125-6

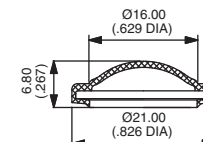


Operating temperature : -40°C to +85°C
The flat seal or O-Ring supplied with the switch should not be used with this boot.

For double sealing on IA series



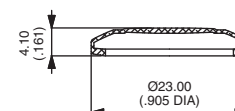
SILICONE BOOT	
Black	U6602
Yellow	U6605
Red	U6606



For AV series (models with \varnothing 19 mm bushing)



SILICONE BOOT	
Black	U2187-2
Green	U2187-3
Grey	U2187-4
Yellow	U2187-5
Red	U2187-6
White	U2187-7
Transparent	U2187-8



Sealing boots

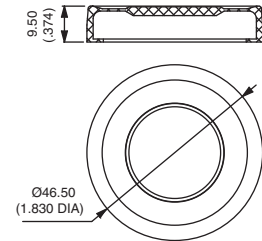
For pushbutton switches or rocker switches

For LPI series

New!



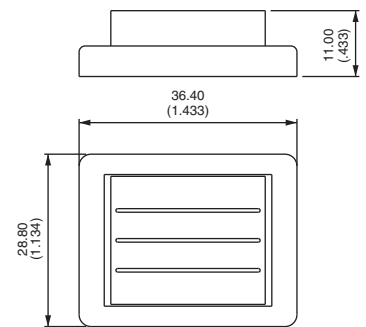
SILICONE BOOT	
Black	U3082
Transparent	U3088



For 2600 series



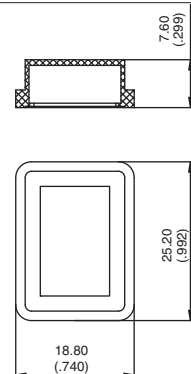
TRANSPARENT SILICONE BOOT
U2150



For FM series



TRANSPARENT PVC BOOT
U5720



For KG series

New!



BLACK SILICONE BOOT
U3084

Also available with pad-printed symbols : on request.

