



Search by part # or keyword

Products

Industries & Solutions

Resources

Shop TE

Sign In



The product information below may not be complete. If you need documentation, similar, compatible or replacement products, please contact us.

4-2332040-2 ! PENDING OBSOLESCENCE

Power Versa-Lock PLUG, 1X2 KEY D



TE Internal #: **4-2332040-2**
TE Internal Description: **Power Versa-Lock PLUG, 1X2 KEY D**

[Add to List](#) | [Digital Datasheet](#)



SHOP OUR DISTRIBUTORS

North America ▼

We are here to help!

Get in touch with our product experts.

- [CHAT WITH US](#)
- [EMAIL US](#)
- [CALL US](#)

Feedback

Replacement Part

Replacement part information for TE Part #: 4-2332040-2

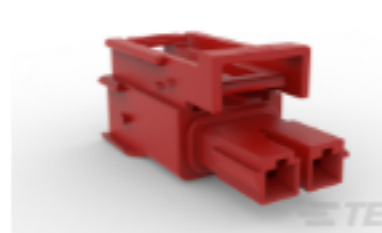
Primary replacement products are recommended, but may not be a form, fit and function replacement. Secondary replacement products may not be an exact substitute for your application. Please use the Product Drawing to validate use in your application.

PRIMARY

RECTANGULAR POWER CONNECTORS

4-2378159-2

Power Versa-Lock 5.0, Rectangular Power Connectors, Housing, Plug...



Non-Stocked

Rectangular Power Connector Type : **Housing**
Connector & Housing Type : **Plug**
Connector System : **Wire-to-Wire**
Number of Positions : **2**
Centerline (Pitch) : **5 mm**

Documents

Features

Product Compliance

CAD Files

3D PDF

[3D_CVM_CVM_4-2332040-2_A.pdf](#)

3D

Customer View Model

[ENG_CVM_CVM_4-2332040-2_A.2d_dxf.zip](#)

English

[ENG_CVM_CVM_4-2332040-2_A.3d_igs.zip](#)

English

[ENG_CVM_CVM_4-2332040-2_A.3d_stp.zip](#)

English

Product Specifications

Engineering Report

[ENG_SS_502-139208_C.pdf](#)

English

Application Specification

[ENG_SS_114-143082_A.pdf](#)

English

Product Specification

[ENG_SS_108-143081_15.pdf](#)

English

Qualification Test Report

[ENG_SS_501-139215_B.pdf](#)

English

Product Environmental Compliance

Product Compliance

[ENG_PC_MD_4-2332040-2_BA\(950507\).xlsx](#)

English

Product Compliance

[ENG_PC_MD_4-2332040-2_BA\(352510\).xml](#)

English

Instruction Sheets

Instruction Sheet (U.S.)

[ENG_SS_408-143099_1.pdf](#)

English

Agency Approvals

UL Report

[ENG_AAD_UL_E28476_20190104_C.pdf](#)

English

Compatible Parts

All Compatible Parts (8)

Filter By Specification

Required Parts (4)

Accessory Parts (3)

Mating parts (1)

REQUIRED From: \$0.039 In-Stock

2329916-1
Power Versa-Lock 5.0, Power...

[VIEW PRODUCT](#)

REQUIRED From: \$0.064 In-Stock

2329914-1
Power Versa-Lock 5.0, Power...

[VIEW PRODUCT](#)

REQUIRED From: \$0.036 In-Stock

2329915-1
Power Versa-Lock 5.0, Power...

[VIEW PRODUCT](#)

REQUIRED From: \$0.036 In-Stock

2329912-1
Power Versa-Lock 5.0, Power...

[VIEW PRODUCT](#)

ACCESSORY From: \$0.067 In-Stock

2334614-2
Power Versa-Lock

ACCESSORY From: \$0.150 In-Stock

2325349-2
Power Versa-Lock

[VIEW PRODUCT](#)

[See More Products](#)

Customers Also Bought

TE Part #: **SSR-240A25**
Potter & Brumfield SSR, Power Relays, Solid State...

[View Product](#)

TE Part #: **3-770476-1**
SL-156, Connector Contact, Socket, Wire-to-Wire /...

[View Product](#)

TE Part #: **T92511A22-24**
Potter & Brumfield T92, Power Relays, Standard...

[View Product](#)

TE Part #: **3-640431-5**
MTA 156, Rectangular Power Connectors, Connector...

[View Product](#)