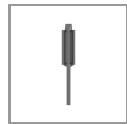
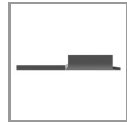
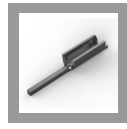




# CRIMP WIRE PINS & TABS



TE CONNECTIVITY (TE)

## CONTACT, SELF PIERCING TAB

Special Purpose Terminals | Special Purpose Terminals

61684-5

TE Internal Number: 61684-5

Always EU RoHS/ELV Compliant

Terminal Style **Pin**

Pin Diameter **.64 mm [ .025 in ]**

Heavy Duty **No**

Barrel Type **Open Barrel**

Material Thickness **.64 mm [ .025 in ]**

✓ Active

↓ **PRODUCT DRAWING**  
English

↓ **3D PDF**

### Product Drawings

#### TAB, SPECIAL

PDF  
**English**

### CAD Files

#### 3D PDF

PDF  
**3D**

#### Customer View Model

2D\_DXF.ZIP  
**English**

#### Customer View Model

3D\_IGS.ZIP  
**English**

#### Customer View Model

3D\_STP.ZIP  
**English**

Please review product documents or [contact us](#) for the latest agency approval information. Please Note: Use the Product Drawing for all design activity.

### Product Type Features

Barrel Type

**Open Barrel**

Wire/Cable Type

**Tinsel Wire**

Insulated

**No**

Insulated Wire Support

**No**

### Body Features

Plating Material **Brass, Tin**

Plating Thickness (µin) **80**

---

Contact Features

Terminal Style **Pin**

Pin Diameter **.64 mm [ .025 in ]**

Terminal Orientation **Straight**

Terminal Length (in) **.26**

---

Dimensions

Material Thickness **.64 mm [ .025 in ]**

Overall Length (in) **.485**

---

Operation/Application

Heavy Duty **No**

---

Packaging Features

Packaging Method **Reel**

Packaging Quantity **13000**

---

Product Compliance

[Statement of Compliance](#)  
PDF

[VIEW ALL PRODUCT COMPLIANCE](#)