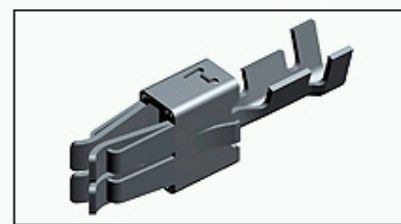




964323-1 Product Details

[Share](#) | [Print](#) | [Email](#)


964323-1

TE Internal Number: 964323-1
✔ Active

[View 3D PDF](#)

Timer Contacts

✔ Always EU RoHS/ELV Compliant (Statement of Compliance)

Product Highlights:

- Timer Products Product Line
- Standard Power-Timer Series
- Wire-to-Wire
- Applies To Wire/Cable
- Contact

[View all Features](#)

Quick Links

- ▶ [Check Pricing & Availability](#)
- ▶ [Search for Tooling](#)
- ▶ [Product Feature Selector](#)
- ▶ [Contact Us About This Product](#)

[Add to My Part List](#) | [Request Sample](#) | [Find Similar Products](#) | [Buy Product](#)

Documentation & Additional Information

Product Drawings:

- [STANDARD POWER TIMER CONTACT TYP A \(PDF, English\)](#)

Catalog Pages/Data Sheets:

- None Available

Product Specifications:

- None Available

Application Specifications:

- None Available

Instruction Sheets:

- None Available

CAD Files: (CAD Format & Compression Information)

- [2D Drawing \(DXF, Version B\)](#)
- [3D Model \(IGES, Version B\)](#)
- [3D Model \(STEP, Version B\)](#)

Additional Information:

- [Product Line Information](#)

Related Products:

- [Tooling](#)

[List all Documents](#)

Product Features (Please use the Product Drawing for all design activity)

Product Type Features:

- Product Line = Timer Products
- Series = Standard Power-Timer
- Product Type = Contact
- Cable Type = FLR (Thin Walled Cable)
- Termination Method to Wire/Cable = Crimp
- Wire/Cable Type = Discrete Wire
- Insulation Support = With

Electrical Characteristics:

- Contact - Rated Current (A) = 40

Termination Features:

- Wire/Cable Size (AWG) = 17 - 20
- Wire/Cable Size (mm²) = 0.5 - 1

Dimensions:

- Mating Area Interface Dimensions (mm [in]) = 4.80 x 0.80 [.189 x .031], 5.80 x 0.80 [.228 x .031], 6.30 x 0.80 [.248 x .031]

Body Features:

- Single Wire Sealing System = No

Contact Features:

- Contact Type = Socket
- Contact Design = Flat, Modified Springs
- Contact Base Material = CuFe2
- Contact Plating, Mating Area, Material = Pre-Tin

Configuration Features:

- GET 0.64 Connector System = No

Industry Standards:

- [RoHS/ELV Compliance](#) = RoHS compliant, ELV compliant
- [Lead Free Solder Processes](#) = Not relevant for lead free process
- RoHS/ELV Compliance History = Always was RoHS compliant
- Agency/Standard = IEC 664/664A (DIN VDE 0110)

Environmental:

- Operating Temperature (°C [°F]) = -40 - +130 [-40 - +266]

Conditions for Usage:

- Applies To = Wire/Cable
- Accepts Wire Insulation Diameter, Range (mm [in]) = 1.40 - 2.10 [0.055 - 0.083]

Operation/Application:

- Application Use = Wire-to-Wire
- Contact Transmits (Typical Application) = Power

Packaging Features:

- Packaging Method = Loose Piece
- Packaging Quantity = 6,000

Other:

- Brand = AMP
- Comment = Refer to the application and product specification for additional information.; Insulation barrel pre-crimped.

