

4MM^2,1 IN 1 OUT SPRING TERMINAL BLOCK

✓ ACTIVE

[Buchanan](#) | [Din Rail Terminal Block Systems](#)

TE Part # **2271559-1**

TE Internal #: **2271559-1**

Terminal Block Type : **Spring Terminal Block**

Block Type : **Standard**

Connector System : **Cable-to-Cable**

Number of Positions : **1**

Centerline (Pitch) : **6.15 mm [.242 in]**

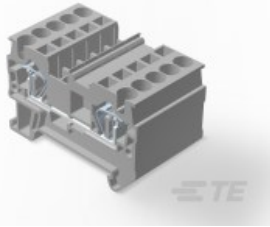
[Add to List](#) ▾

[Similar Products](#)



ORDER SAMPLES

[Compatible Parts & Tooling](#)



SHOP OUR DISTRIBUTORS

North America ▾

Request pricing, availability and customization options

[CONTACT US](#)



We are here to help!

Get in touch with our product experts.



[CHAT WITH US](#)



[EMAIL US](#)



[CALL US](#)

DOCUMENTS

FEATURES

PRODUCT COMPLIANCE

Product Drawings

4MM^2,1 IN 1 OUT SPRING TERMINAL BLOCK

[4MM^2,1 IN 1 OUT SPRING TERMINAL BLOCK](#)

English

CAD Files

3D PDF

[3D_CVM_CVM_2271559-1_A.pdf](#) 3D

Customer View Model

[ENG_CVM_CVM_2271559-1_A.2d_dxf.zip](#)

English

[ENG_CVM_CVM_2271559-1_A.3d_igs.zip](#)

English

[ENG_CVM_CVM_2271559-1_A.3d_stp.zip](#)

English

Product Specifications

Application Specification

[ENG_SS_114-137138_A3.pdf](#) English

Product Specification

[ENG_SS_108-137138_A3.pdf](#) English

Please review product documents or [contact us](#) for the latest agency approval information. Please Note: Use the Product Drawing for all design activity.



Product Type Features

Terminal Block Type : **Spring Terminal Block**

Block Type : **Standard**

Connector System : **Cable-to-Cable**

Sealable : **No**

Product Type : **Terminal Block**

Configuration Features

Number of Positions : **1**

Number of Circuits : **1**

Ground Function : **Without**

Fuse Function : **Without**

Switch Function : **Without**

Number of Contacts : **1**

Electrical Characteristics

Current Rating (A): **30**

Voltage Rating (VAC): **600**

Continuous Current Rating (A):
30

Contact Features

Contact Base Material : **Copper**

Contact Configuration : **Quick Connect**

Contact Current Rating (Max) (A):
30

Contact Plating Material : **Matte Tin**

Mechanical Attachment

Connector Mounting Type :
DIN Rail

Housing Features

Centerline (Pitch) : **6.15 mm [.242 in]**

Housing Color : **Gray**

Housing Material : **Nylon**

Dimensions

Wire Size : **28 – 10 AWG [.08 – 4 kcmil]**

Usage Conditions

Operating Temperature Range (°C):
-40 – 105

Operation/Application Circuit Application : **Power**

Industry Standards

UL Flammability Rating : **UL 94V-0**

Statement of Compliance

[Statement of Compliance pdf](#)

Compatible Parts

[> Contact Product Support](#)

Also in the Series | [Din Rail Terminal Block Systems](#)



Terminal Block Hardware (26)




Terminal Block Marking (4)



Terminal Blocks (158)

Customers Also Bought



TE Part # 68085
DIE COPALUM IP
69099 6



TE Part # 52746
SPLICE, COPALUM
PARA 6



TE Part # 52791
SPLICE, COPALUM
PARA 16-14



TE Part # 52792
SPLICE, COPALUM
PARA 12-10

About TE Connectivity

For Partners

Customer Support

CALL US

LIVE CHAT

United States

Our Company

Events

TE News Center

Careers


Investors

Corporate Responsibility

Terms and Conditions of Sale

Distributors

Suppliers

 Email or Call Us

 Find Authorized Distributors

 What's New on TE.com

 Product FAQs

Select Country & Language

United States (EN)

Germany (DE)

China (中文)

Japan (日本語)

Find Your Country/Region ▼