

6MM^2,1 IN 1 OUT SPRINGTERMINAL BLOCK

✓ ACTIVE

[Buchanan](#) | [Din Rail Terminal Block Systems](#)

TE Part # **2271587-2**

TE Internal #: **2271587-2**

Terminal Block Type : **Spring Terminal Block**

Block Type : **Standard**

Connector System : **Cable-to-Cable**

Number of Positions : **1**

Centerline (Pitch) : **8.15 mm [.321 in]**

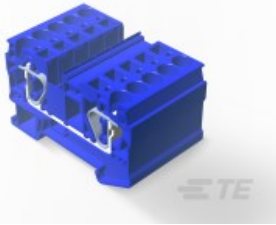
[Add to List](#) ▾

[Similar Products](#)



ORDER SAMPLES

Compatible Parts & Tooling



SHOP OUR DISTRIBUTORS

North America ▾

Request pricing, availability and customization options

CONTACT US



We are here to help!

Get in touch with our product experts.



CHAT WITH US



EMAIL US



CALL US

DOCUMENTS

FEATURES

PRODUCT COMPLIANCE

Product Drawings

6MM^2,1 IN 1 OUT SPRINGTERMINAL BLOCK

[6MM^2,1 IN 1 OUT SPRINGTERMINAL BLOCK](#)

English

CAD Files

3D PDF

[3D_CVM_CVM_2271587-2_A.pdf](#) 3D

Customer View Model

[ENG_CVM_CVM_2271587-2_A.2d_dxf.zip](#)

English

[ENG_CVM_CVM_2271587-2_A.3d_igs.zip](#)

English

[ENG_CVM_CVM_2271587-2_A.3d_stp.zip](#)

English

Product Specifications

Application Specification

[ENG_SS_114-137138_A3.pdf](#) English

Product Specification

[ENG_SS_108-137138_A3.pdf](#) English

Please review product documents or [contact us](#) for the latest agency approval information. Please Note: Use the Product Drawing for all design activity.

Product Type
Features

Terminal Block Type : **Spring Terminal Block**
Block Type : **Standard**
Connector System : **Cable-to-Cable**
Sealable : **No**
Product Type : **Terminal Block**

Configuration
Features

Number of Positions : **1**
Number of Circuits : **1**
Ground Function : **Without**
Fuse Function : **Without**
Switch Function : **Without**
Number of Contacts : **1**

Electrical
Characteristics

Current Rating (A): **45**
Voltage Rating (VAC): **600**
Continuous Current Rating (A):
45

Contact Features

Contact Base Material : **Copper**
Contact Configuration : **Quick Connect**
Contact Current Rating (Max) (A):
45
Contact Plating Material : **Matte Tin**

Mechanical
Attachment

Connector Mounting Type :
DIN Rail

Housing Features

Centerline (Pitch) : **8.15 mm [.321 in]**
Housing Color : **Blue**
Housing Material : **Nylon**

Dimensions

Wire Size : **24 – 8 AWG [.2 – 6
kcmil]**

Usage Conditions

Operating Temperature Range (°C):
-40 – 105

Operation/Application Circuit Application : **Power**

Industry
Standards

UL Flammability Rating : **UL 94V-0**



Statement of
Compliance

[Statement of Compliance pdf](#)

Compatible Parts

[> Contact Product Support](#)

Also in the Series | [Din Rail Terminal Block Systems](#)



Terminal Block
Hardware (26)

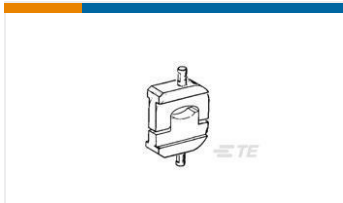


Terminal Block
Marking (4)

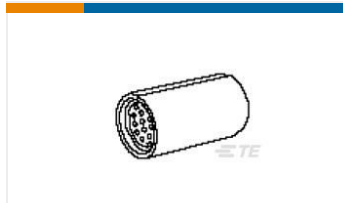


Terminal Blocks (158)

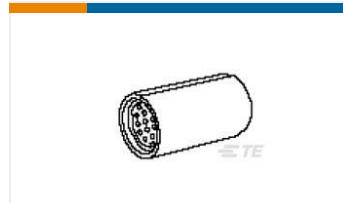
Customers Also Bought



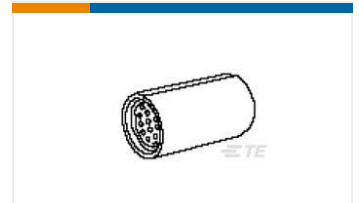
TE Part # 68085
DIE COPALUM IP
69099 6



TE Part # 52746
SPLICE, COPALUM
PARA 6



TE Part # 52791
SPLICE, COPALUM
PARA 16-14



TE Part # 52792
SPLICE, COPALUM
PARA 12-10