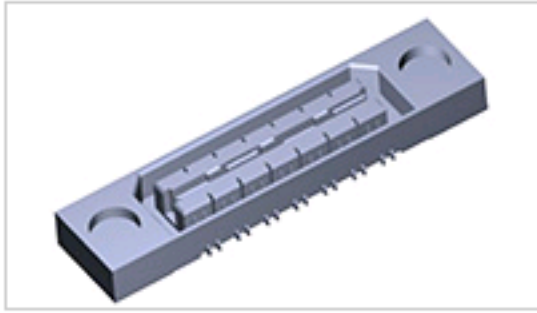




3-1658062-1 Product Details

[Share](#) | [Print](#) | [Email](#)


Active

[View 3D PDF](#)

MICTOR SB Connectors

MSB0.80RC-ASY28DP,GP,10,VCTY

3-1658062-1

TE Internal Number: 3-1658062-1

Product Highlights [View All](#)

- MICTOR SB Product Line
- Board-to-Board
- Connector
- Connector Assembly
- Connector Style = Receptacle

[Pricing & Availability](#)

[Request Sample](#)

[Add to My Part List](#)

[Buy Product through Distributor](#)

Feedback

[Documents](#)

[Features](#)

[Compliance](#)

Please Note:

Use the Product Drawing for all design activity

Product Type Features	
Product Line	MICTOR SB
Product Type	Connector
Connector Type	Connector Assembly
Body Features	
Polyamide Film Pad	With
Contact Features	
Contact Loading Pattern	Fully Loaded
Contact Plating, Mating Area, Material	Select Gold
Solder Tail Contact Plating	Gold over Nickel
Contact Material (Ground)	Phosphor Bronze
Contact Material (Signal)	Phosphor Bronze
Housing Features	
Connector Style	Receptacle
Centerline (mm [in])	0.80 [0.031]
Mating Alignment	With
Mating Alignment Type	Guide Post
Housing Color	Black
Housing Material	LCP (Liquid Crystal Polymer)

Configuration Features	
Number of Positions	28
Industry Standards	
RoHS/ELV Compliance	RoHS compliant, ELV compliant
Lead Free Solder Processes	Reflow solder capable to 245°C, Reflow solder capable to 260°C
RoHS/ELV Compliance History	Always was RoHS compliant
Conditions for Usage	
Applies To	Printed Circuit Board
Operation/Application	
Application Use	Board-to-Board
Pick and Place Cover	Dot
Packaging Features	
Packaging Method	Tray/Box
Other	
Brand	AMP
Comment	Use of stand offs recommended. Contact Product Engineering for recommendations.

Related Products

Not quite the product you're looking for?

[Find Similar Products](#)

[View Part in Product Feature Selector](#)

[Check for Tooling](#)

Corporate Information

- [About TE](#)
- [Investors](#)
- [News Room](#)
- [Supplier Portal](#)
- [Careers](#)
- [Terms & Conditions](#)
- [Privacy Policy](#)
- [Global Accessibility Statement](#)

Quick Links

- [Distributor Inventory](#)
- [Product Cross Reference](#)
- [Documents & Drawings](#)
- [Product Compliance Support Center](#)
- [Site Map](#)

Customer Support

- [Email or Chat With Us](#)
- [Find a Phone Number](#)
- [Knowledge Base](#)
- [Manage Your Account](#)

Keep Me Informed

