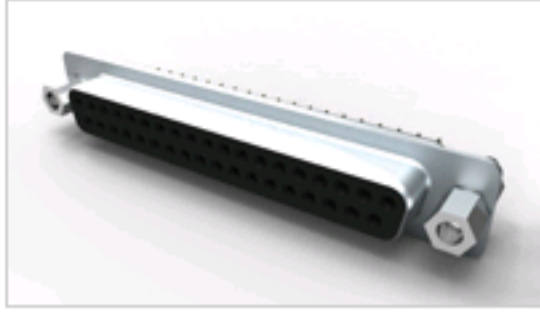




3-1634225-2 Product Details

[Share](#) | [Print](#) | [Email](#)


✔ **Active**
[View 3D PDF](#)

Standard Board Mount Connectors

37w D skt W B/L & 4-40 s/lock 15u" gold
3-1634225-2 ✔
TE Internal Number: 3-1634225-2

Product Highlights [View All](#)

- 37 Positions
- Connector Style = Receptacle
- PCB Mounting Orientation = Vertical
- Product Series = HD 20
- With Mating Connector Lock

- [Pricing & Availability](#)
- [Request Sample](#)
- [Add to My Part List](#)
- [Buy Product through Distributor](#)

Feedback

[Documents](#) | [Features](#) | [Compliance](#)

Please Note:
Use the Product Drawing for all design activity

Product Type Features	
PCB Mounting Orientation [?]	Vertical
Product Series [?]	HD 20
Mating Connector Lock [?]	With
Mating Connector Lock Type [?]	Female Screwlocks, 4-40 UNC
PCB Mount Retention [?]	With
PCB Mount Retention Type [?]	Boardlock(s)
Shell Type [?]	Full Metal
Shell Size [?]	4
Grounding Indents [?]	Without
Grounding Straps [?]	With
PCB Mount Style [?]	Through Hole
Color Code [?]	None
Sealed	No
Color	Black
Mechanical Attachment	
Panel Mount Retention [?]	Without
Termination Features	
Grounding Clips [?]	Without
Termination Post Length (mm [in]) [?]	4.30 [0.1692]
Dimensions	
PCB Thickness, Recommended (in [mm]) [?]	0.062 [1.57]

Body Features	
Shell Material	Steel
Shell Plating	Tin
Contact Features	
Contact Plating, Mating Area, Material [?]	Gold (15)
Solder Tail Contact Plating [?]	Tin over Nickel
Contact Base Material	Phosphor Bronze
Housing Features	
Connector Style	Receptacle
Housing Material	Thermoplastic
Configuration Features	
Number of Positions [?]	37
Industry Standards	
RoHS/ELV Compliance [?]	RoHS compliant, ELV compliant
Lead Free Solder Processes [?]	Wave solder capable to 240°C, Wave solder capable to 260°C, Wave solder capable to 265°C
RoHS/ELV Compliance History	Always was RoHS compliant
UL Flammability Rating	UL 94V-0
Approved Standards	UL E28476
Other	
Brand	AMP

Related Products

Not quite the product you're looking for?
[Find Similar Products](#)
[View Part in Product Feature Selector](#)
[Check for Tooling](#)

Corporate Information

- [About TE](#)
- [Investors](#)
- [News Room](#)
- [Supplier Portal](#)
- [Careers](#)
- [Terms & Conditions](#)
- [Privacy Policy](#)
- [Global Accessibility Statement](#)

Quick Links

- [Distributor Inventory](#)
- [Product Cross Reference](#)
- [Documents & Drawings](#)
- [Product Compliance Support Center](#)
- [Site Map](#)

Customer Support

- [Email or Chat With Us](#)
- [Find a Phone Number](#)
- [Knowledge Base](#)
- [Manage Your Account](#)

Keep Me Informed

