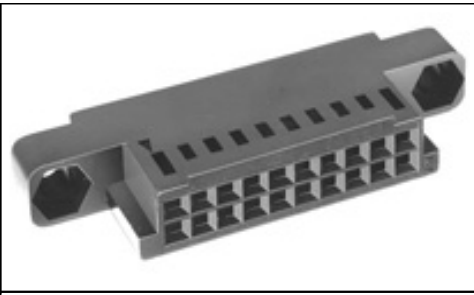


2-88637-6 Product Details

Live Product Chat US Only
8:30am - 5pm ET, Mon - Fri



2-88637-6

Active

Flexible Film Connectors

[Always EU RoHS/ELV Compliant](#) ([Statement of Compliance](#))

Product Highlights:

- Housing
- 2.54 mm Centerline
- Connector Type = Standard
- Number of Positions = 44
- Number of Rows = Dual

[View all Features](#) | [Find Similar Products](#)

Quick Links

- [Check Pricing & Availability](#)
- [Search for Tooling](#)
- [View Contacts \(59\)](#)
- [Product Feature Selector](#)
- [Contact Us About This Product](#)

Documentation & Additional Information

Product Drawings:

- [HOUSING, RCPT, DBL ROW / W DETENTS, .100@22, FFC](#) (PDF, English)

Catalog Pages/Data Sheets:

- None Available

Product Specifications:

- None Available

Application Specifications:

- None Available

Instruction Sheets:

- None Available

CAD Files: ([CAD Format & Compression Information](#))

- [2D Drawing](#) (DXF, Version AE)
- [3D Model](#) (IGES, Version AE)
- [3D Model](#) (STEP, Version AE)

Additional Information:

- [Product Line Information](#)

Related Products:

- [Tooling](#)
- [Contacts \(59\)](#)

[List all Documents](#)

Product Features (Please use the Product Drawing for all design activity)

Product Type Features:

- [Product Type](#) = Housing
- [Connector Type](#) = Standard
- [Number of Positions](#) = 44
- [Mating Type](#) = Receptacle
- [Mating Connector Lock](#) = With
- [Mating Connector Lock Type](#) = Detent
- [Mating Polarization](#) = With
- [Mounting Ears](#) = With
- Flame Retardant = Yes
- Color = Black
- Stamped = Yes
- Comment = Use Extraction Tool No. 91093-1 for round wire contacts.

Mechanical Attachment:

- [Panel Attachment](#) = With

Body Related Features:

- [Centerline \(mm \[in\]\)](#) = 2.54 [0.100]
- [Number of Rows](#) = Dual

Housing Related Features:

- Housing Material = Thermoplastic
- Housing Flammability Rating = UL 94V-0

Industry Standards:

- [RoHS/ELV Compliance](#) = RoHS compliant, ELV compliant
- [Lead Free Solder Processes](#) = Not relevant for lead free process
- RoHS/ELV Compliance History = Always was RoHS compliant

Conditions for Usage:

- [Terminate To](#) = FFC Cable

Other:

- Brand = AMP