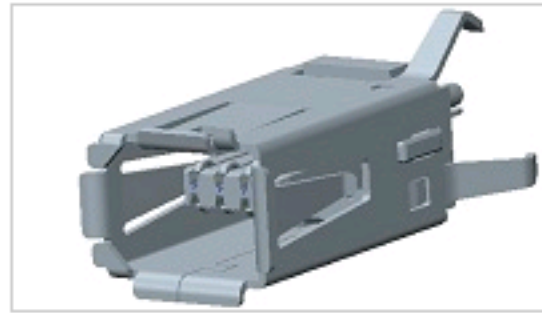




1971886-1 Product Details

[Share](#) | [Print](#) | [Email](#)


PCB Mounted Jacks - Single Port, Multi-port and Stacked

D-SHAPE THR VERTICAL MINI IO RECEPTACLE

1971886-1

TE Internal Number: 1971886-1

Active

[View 3D PDF](#)

Product Highlights [View All](#)

- Connector
- Preloaded
- Jack Type = Industrial Mini
- 8 Positions
- PCB Mounting Orientation = Top Entry (Vertical)

[Pricing & Availability](#)

[Request Sample](#)

[Add to My Part List](#)

[Buy Product through Distributor](#)

Feedback

[Documents](#) | [Features](#) | [Compliance](#)

Please Note:
Use the Product Drawing for all design activity

Product Type Features	
Product Type	Connector
Jack Type	Industrial Mini
PCB Mounting Orientation	Top Entry (Vertical)
PCB Mount Style	Through Hole
LED	Without
Panel Stops	Without
Keyed	No
Profile	Standard

Mechanical Attachment	
Panel Mount Retention	Without

Termination Features	
Termination Method to PC Board	Solder

Dimensions	
PCB Tail Length (mm [in])	3.20 [0.126]
PCB Thickness, Recommended (mm [in])	1.60 [0.063]

Contact Features	
Solder Tail Contact Plating	Tin over Nickel
Contact Plating, Mating Area, Material	Gold
Contact Base Material	Copper Alloy

Housing Features	
Housing Material	Thermoplastic
Housing Color	Black

Configuration Features	
Preloaded	Yes
Number of Positions	8

Industry Standards	
RoHS/ELV Compliance	RoHS compliant, ELV compliant
Lead Free Solder Processes	Not reviewed for lead free solder process
RoHS/ELV Compliance History	Always was RoHS compliant
UL Flammability Rating	UL 94V-0

Product Availability	
Region	Asia, North America

Other	
Brand	TE Connectivity

Related Products

Not quite the product you're looking for?
[Find Similar Products](#)

[View Part in Product Feature Selector](#)

[Check for Tooling](#)

Corporate Information

- [About TE](#)
- [Investors](#)
- [News Room](#)
- [Supplier Portal](#)
- [Careers](#)
- [Terms & Conditions](#)
- [Privacy Policy](#)
- [Global Accessibility Statement](#)

Quick Links

- [Distributor Inventory](#)
- [Product Cross Reference](#)
- [Documents & Drawings](#)
- [Product Compliance Support Center](#)
- [Site Map](#)

Customer Support

- [Email or Chat With Us](#)
- [Find a Phone Number](#)
- [Knowledge Base](#)
- [Manage Your Account](#)

Keep Me Informed

