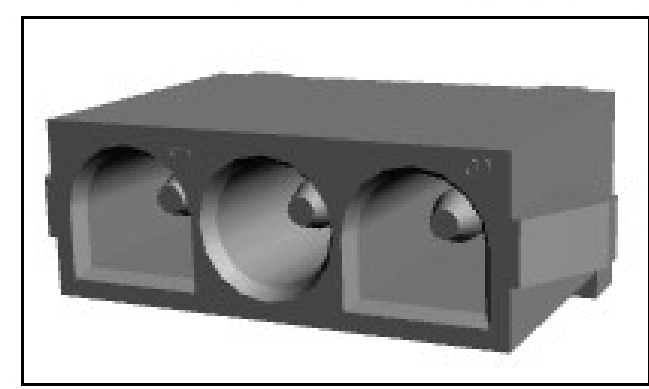




# 1586958-1 Product Details

[Share](#) | [Print](#) | [Email](#)


**1586958-1**

## .250" Centerline, 600 V, 19 - 36 A max

Always EU RoHS/ELV Compliant (Statement of Compliance)

**Product Highlights:**

- Universal MATE-N-LOK Product Line
- Wire-to-Board
- Applies To Printed Circuit Board
- Connector
- Header

[View all Features](#)

**Quick Links**

- ▶ [Pricing & Availability](#)
- ▶ [Search for Tooling](#)
- ▶ [Product Feature Selector](#)
- ▶ [Contact Us About This Product](#)

TE Internal Number: 1586958-1  
 Active

[View 3D PDF](#)

[Add to My Part List](#) [Request Sample](#) [Find Similar Products](#) [Buy Product](#)

Documentation & Additional Information	
<p><b>Product Drawings:</b></p> <ul style="list-style-type: none"> <li>• <a href="#">PIN HEADER ASSEMBLY, 3 CIRCUIT UNIVERSAL MATE-N-LOK(TM)</a> (PDF, English)</li> </ul> <p><b>Catalog Pages/Data Sheets:</b></p> <ul style="list-style-type: none"> <li>• None Available</li> </ul> <p><b>Product Specifications:</b></p> <ul style="list-style-type: none"> <li>• None Available</li> </ul> <p><b>Application Specifications:</b></p> <ul style="list-style-type: none"> <li>• None Available</li> </ul> <p><b>Instruction Sheets:</b></p> <ul style="list-style-type: none"> <li>• None Available</li> </ul> <p><b>CAD Files:</b> (CAD Format &amp; Compression Information)</p> <ul style="list-style-type: none"> <li>• <a href="#">2D Drawing (DXF, Version A)</a></li> <li>• <a href="#">3D Model (IGES, Version A)</a></li> <li>• <a href="#">3D Model (STEP, Version A)</a></li> </ul>	<p><b>Additional Information:</b></p> <ul style="list-style-type: none"> <li>• <a href="#">Product Line Information</a></li> </ul> <p><b>Related Products:</b></p> <ul style="list-style-type: none"> <li>• <a href="#">Tooling</a></li> </ul>

[List all Documents](#)

Product Features (Please use the Product Drawing for all design activity)	
<p><b>Product Type Features:</b></p> <ul style="list-style-type: none"> <li>• Product Line = Universal MATE-N-LOK</li> <li>• Product Type = Connector</li> <li>• Connector Type = Header</li> <li>• PCB Mounting Orientation = Vertical</li> <li>• PCB Mount Retention = Without</li> <li>• PCB Mount Alignment = Without</li> <li>• Sealed = No</li> </ul> <p><b>Mechanical Attachment:</b></p> <ul style="list-style-type: none"> <li>• Contact Retention = Without</li> <li>• Mating Retention Type = Positive Lock</li> <li>• Panel Mount Retention = Without</li> </ul> <p><b>Electrical Characteristics:</b></p> <ul style="list-style-type: none"> <li>• Contact - Rated Current (A) = 12</li> <li>• Operating Voltage Reference = AC</li> <li>• Operating Voltage (VAC) = 600</li> </ul> <p><b>Termination Features:</b></p> <ul style="list-style-type: none"> <li>• Termination Method to Wire/Cable = Solder</li> <li>• Termination Method to PC Board = Through Hole - Solder</li> </ul> <p><b>Dimensions:</b></p> <ul style="list-style-type: none"> <li>• Tail Length (mm [in]) = 3.94 - 4.69 [0.155 - 0.185]</li> <li>• PCB Thickness, Recommended (mm [in]) = 1.57 [0.062]</li> </ul> <p><b>Body Features:</b></p> <ul style="list-style-type: none"> <li>• Mating Retention = With</li> <li>• Assembly Integration Feature = Without</li> </ul> <p><b>Contact Features:</b></p> <ul style="list-style-type: none"> <li>• Contact Type = Pin</li> <li>• Contact Style = Straight</li> <li>• Contact Layout = In-Line</li> <li>• Contact Base Material = Phosphor Bronze</li> <li>• Contact Plating, Mating Area, Material = Pre-Tin</li> <li>• Tail Plating Material = Pre-Tin</li> <li>• Multiple Contact Types = Without</li> </ul>	<p><b>Housing Features:</b></p> <ul style="list-style-type: none"> <li>• Connector Style = Plug</li> <li>• Centerline (mm [in]) = 6.35 [0.2499]</li> <li>• Housing Material = Nylon - GF</li> <li>• Housing Color = Natural</li> <li>• Mating Alignment = With</li> <li>• Mating Alignment Type = Polarization</li> </ul> <p><b>Configuration Features:</b></p> <ul style="list-style-type: none"> <li>• Number of Positions = 3</li> <li>• Number of Rows = 1</li> <li>• Strain Relief = Without</li> </ul> <p><b>Industry Standards:</b></p> <ul style="list-style-type: none"> <li>• Agency/Standard = UL</li> <li>• UL Flammability Rating = UL 94V-2</li> <li>• RoHS/ELV Compliance = RoHS compliant, ELV compliant</li> <li>• Lead Free Solder Processes = Wave solder capable to 260°C, Wave solder capable to 240°C, Wave solder capable to 265°C</li> <li>• RoHS/ELV Compliance History = Always was RoHS compliant</li> <li>• VDE Tested = Yes</li> <li>• UL Rating = Recognized</li> <li>• UL File Number = E28476</li> </ul> <p><b>Environmental:</b></p> <ul style="list-style-type: none"> <li>• Operating Temperature (°C [°F]) = -55 - +105 [-67 - +221]</li> </ul> <p><b>Conditions for Usage:</b></p> <ul style="list-style-type: none"> <li>• Applies To = Printed Circuit Board</li> <li>• Glow Wire Rating = Glow Wire</li> <li>• For Use With = Universal MATE-N-LOK Plug Housing</li> </ul> <p><b>Operation/Application:</b></p> <ul style="list-style-type: none"> <li>• Application Use = Wire-to-Board</li> </ul> <p><b>Packaging Features:</b></p> <ul style="list-style-type: none"> <li>• Packaging Method = Bag</li> <li>• Packaging Quantity = 100</li> </ul> <p><b>Other:</b></p> <ul style="list-style-type: none"> <li>• Brand = AMP</li> </ul>

