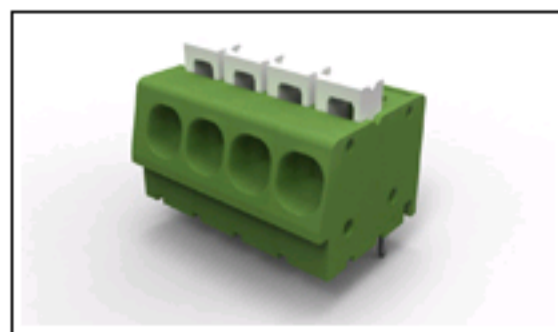




1-1986712-1 Product Details

Share Print Email



1-1986712-1

TE Internal Number: 1-1986712-1

Active

Terminal Block Connectors

Always EU RoHS/ELV Compliant (Statement of Compliance)

Product Highlights:

- Connector
- Type of Connector = Spring (Straight)
- Not Shrouded
- Housing Color = Green
- Side Stackable

[View all Features](#)

[Add to My Part List](#) [Request Sample](#) [Find Similar Products](#) [Buy Product](#)

Quick Links

- ▶ [Pricing & Availability](#)
- ▶ [Search for Tooling](#)
- ▶ [Product Feature Selector](#)
- ▶ [Contact Us About This Product](#)

Documentation & Additional Information

Product Drawings:

- [SPRING TYPE, SIDE WIRE ENTRY TERMINAL SIDE STACKABLE...](#) (PDF, English)

Catalog Pages/Data Sheets:

- None Available

Product Specifications:

- None Available

Application Specifications:

- None Available

Instruction Sheets:

- None Available

CAD Files:

- None Available

Additional Information:

- [Product Line Information](#)

Related Products:

- [Tooling](#)

[List all Documents](#)

Product Features (Please use the Product Drawing for all design activity)

Product Type Features:

- [Product Type](#) = Connector
- [Type of Connector](#) = Spring (Straight)
- [Shrouded](#) = No
- [Mount Angle](#) = Vertical
- [UL File Number](#) = E60677

Electrical Characteristics:

- [Current Rating, Max. \(A\)](#) = 16
- [Voltage \(VAC\)](#) = 300

Dimensions:

- [Pin Length \(mm \[in\]\)](#) = 3.50 [0.138]

Body Features:

- [Side Stackable](#) = Yes
- [Wire Entry Diameter \(Solid Wire\) \(mm²\)](#) = 0.05 - 3.00
- [Wire Entry Diameter \(Stranded Wire\) \(mm²\)](#) = 0.05 - 3.00
- [Wire Entry Angle](#) = Side
- [Interlock](#) = Without
- [Wire Range \(mm \[AWG\]\)](#) = 0.05-3.00² [30-12]
- [Lever Color](#) = White

Contact Features:

- [Threaded Flange](#) = Without
- [Contact Plating, Mating Area, Material](#) = Tin over Copper Alloy

Housing Features:

- [Housing Color](#) = Green
- [Centerline \(mm \[in\]\)](#) = 5.08 [0.200]
- [Housing Material](#) = Polyamide

Configuration Features:

- [Screw Flange](#) = Without
- [Number of Positions](#) = 11
- [Number of Rows](#) = Single

Industry Standards:

- [RoHS/ELV Compliance](#) = RoHS compliant, ELV compliant
- [Lead Free Solder Processes](#) = Wave solder capable to 240°C, Wave solder capable to 260°C, Wave solder capable to 265°C
- [RoHS/ELV Compliance History](#) = Always was RoHS compliant

Other:

- [Brand](#) = TE Connectivity

Corporate Information

- [About TE](#)
- [Investors](#)
- [News Room](#)
- [Supplier Portal](#)
- [Careers](#)
- [Terms & Conditions](#)
- [Privacy Policy](#)

Quick Links

- [Distributor Inventory](#)
- [Product Cross Reference](#)
- [Documents & Drawings](#)
- [Product Compliance Support Center](#)
- [Site Map](#)

Customer Support

- [Email or Chat With Us](#)
- [Find a Phone Number](#)
- [Knowledge Base](#)
- [Manage Your Account](#)

Keep Me Informed

Receive TE News, Events & Technology Updates

Enter your email address

