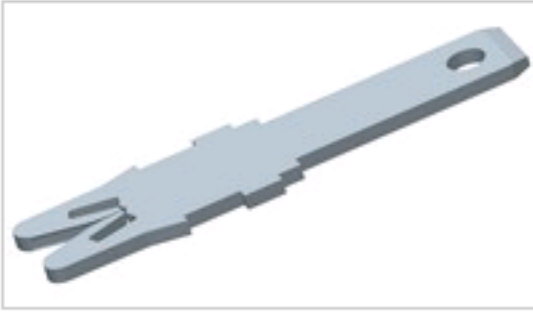


# 4-1601005-2 Product Details

[Share](#) | [Print](#) | [Email](#)


Active

## SIAMEZE Terminals

131-012-000=TAB,110X020,STDSMZ

**4-1601005-2**

TE Internal Number: 4-1601005-2

**Product Highlights** [View All](#)

- Terminal
- Terminal Configuration = Tab
- .16 - 1.02 mm Magnet Wire Range
- Pre-Tin Plating Material
- Specials = Barb Tab

- [Pricing & Availability](#)
- [Request Sample](#)
- [Add to My Part List](#)
- [Buy Product through Distributor](#)

Feedback

[Documents](#) | [Features](#) | [Compliance](#)

**Please Note:**  
Use the Product Drawing for all design activity

Product Type Features	
Product Type	Terminal
Terminal Configuration	Tab
Specials	Barb Tab
Tab Hole/Dimple	Hole
Dimensions	
Tab Size (mm [in])	2.79 x 0.51 [.110 x .020]
Length (mm [in])	16.26 [0.640]
Body Features	
Magnet Wire Range (mm [AWG])	0.16 - 1.02 [18 - 34]
Plating Material	Pre-Tin
Material	Brass

Industry Standards	
RoHS/ELV Compliance	RoHS compliant, ELV compliant
Lead Free Solder Processes	Not reviewed for lead free solder process
RoHS/ELV Compliance History	Always was RoHS compliant
Packaging Features	
Packaging Method	Loose Piece
Other	
Brand	AMP

**Related Products**

Not quite the product you're looking for?  
[Find Similar Products](#)

[View Part in Product Feature Selector](#)

[Check for Tooling](#)

- Corporate Information**
- [About TE](#)
  - [Investors](#)
  - [News Room](#)
  - [Supplier Portal](#)
  - [Careers](#)
  - [Terms & Conditions](#)
  - [Privacy Policy](#)
  - [Global Accessibility Statement](#)

- Quick Links**
- [Distributor Inventory](#)
  - [Product Cross Reference](#)
  - [Documents & Drawings](#)
  - [Product Compliance Support Center](#)
  - [Site Map](#)

- Customer Support**
- [Email or Chat With Us](#)
  - [Find a Phone Number](#)
  - [Knowledge Base](#)
  - [Manage Your Account](#)

**Keep Me Informed**