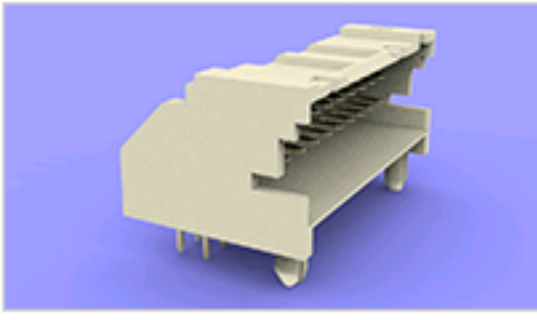




# 2-1969572-6 Product Details

[Share](#) | [Print](#) | [Email](#)


Preliminary

## Economy Power Connectors

ASSY, HDR, RIGHT ANGLE, DUAL ROW, EP2.5

**2-1969572-6**

TE Internal Number: 2-1969572-6

**Product Highlights** [View All](#)

- Economy Power 2.5 Product Line
- Connector
- Wire-to-Board
- Applies To Printed Circuit Board
- 26 Positions

[Pricing & Availability](#)

[Request Sample](#)

[Add to My Part List](#)

[Buy Product through Distributor](#)

Feedback

[Documents](#)

**[Features](#)**

[Compliance](#)

**Please Note:**

Use the Product Drawing for all design activity

Product Type Features	
Product Line	Economy Power 2.5
Product Type	Connector
Connector Type	Header
PCB Mounting Orientation	Right Angle
PCB Mount Retention	With
PCB Mount Alignment	With
Sealed	No

Mechanical Attachment	
Mating Retention Type	Latch(ing)

Electrical Characteristics	
Contact - Rated Current (A)	7.5
Operating Voltage Reference	AC
Operating Voltage (VAC)	250

Termination Features	
Termination Method to PC Board	Through Hole - Solder

Dimensions	
Tail Length (mm [in])	3.4 [0.134]
Length (X-Axis) (mm [in])	35.39 [1.394]
Width (Z-Axis) (mm [in])	10.16 [0.400]
Profile Height (Y-Axis) (mm [in])	12.17 [0.479]

Body Features	
Selectively Loaded	No
Header Type	Shrouded
Mating Retention	With

Contact Features	
Contact Type	Pin
Contact Plating, Termination Area, Material	Tin
Contact Plating, Mating Area, Material	Tin
Contact Base Material	Brass

Housing Features	
Centerline (mm [in])	2.50 [0.098]
Connector Style	Plug
Housing Color	Natural
Housing Material	Nylon - GF

Configuration Features	
Number of Positions	26
Number of Rows	2

Industry Standards	
RoHS/ELV Compliance	RoHS compliant, ELV compliant
Lead Free Solder Processes	Wave solder capable to 240°C, Wave solder capable to 260°C, Wave solder capable to 265°C
RoHS/ELV Compliance History	Always was RoHS compliant
UL Flammability Rating	UL 94V-0

Environmental	
Operating Temperature (°C [°F])	-25 - +105 [-13 - +221]

Conditions for Usage	
Applies To	Printed Circuit Board
Glow Wire Rating	Standard Part - Not Glow Wire

Operation/Application	
Application Use	Wire-to-Board
Contact Transmits (Typical Application)	Power

Packaging Features	
Packaging Method	Box/Carton

Other	
Brand	TE Connectivity

**Related Products**

Not quite the product you're looking for?  
[Find Similar Products](#)

[View Part in Product Feature Selector](#)

[Check for Tooling](#)

**Corporate Information**

- [About TE](#)
- [Investors](#)
- [News Room](#)
- [Supplier Portal](#)
- [Careers](#)
- [Terms & Conditions](#)
- [Privacy Policy](#)
- [Global Accessibility Statement](#)

**Quick Links**

- [Distributor Inventory](#)
- [Product Cross Reference](#)
- [Documents & Drawings](#)
- [Product Compliance Support Center](#)
- [Site Map](#)

**Customer Support**

- [Email or Chat With Us](#)
- [Find a Phone Number](#)
- [Knowledge Base](#)
- [Manage Your Account](#)

**Keep Me Informed**

