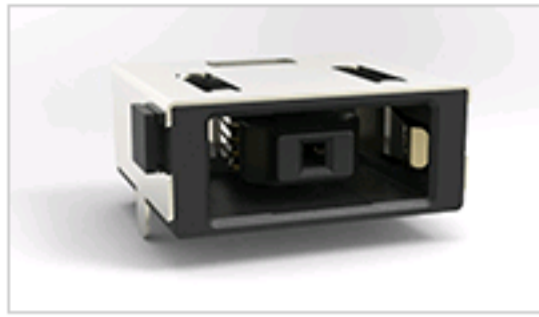


1-2129458-1 Product Details

[Share](#) | [Print](#) | [Email](#)


Battery Interconnection System

DC Power Jack Conn DIP type 10.7A

1-2129458-1

TE Internal Number: 1-2129458-1

- [Pricing & Availability](#)
- [Request Sample](#)
- [Add to My Part List](#)
- [Buy Product through Distributor](#)

Feedback

Active
[View 3D PDF](#)

Product Highlights [View All](#)

- Connector
- Housing
- Connector Style = Receptacle
- Type of Connector = DC Jack
- 5 Positions

[Documents](#) | [Features](#) | [Compliance](#)

Please Note:
Use the Product Drawing for all design activity

Product Type Features	
Product Type	Connector
Connector Type	Housing
Type of Connector	DC Jack
Mount Angle	Right Angle
PCB Mount Retention	With
PCB Mount Retention Type	Grounding Plates
Mechanical Attachment	
Mount	Printed Circuit Board
Electrical Characteristics	
Voltage Rating (VDC)	25
Termination Features	
Termination Post Length (mm [in])	1.40 [0.055]
Contact Features	
Solder Tail Contact Plating	Matte Tin
Contact Base Material	Copper Alloy
Contact Plating, Mating Area, Material	Gold

Housing Features	
Connector Style	Receptacle
Housing Material	Thermoplastic
Housing Color	Black
Configuration Features	
Number of Positions	5
Industry Standards	
RoHS/ELV Compliance	RoHS compliant, ELV compliant
Lead Free Solder Processes	Reflow solder capable to 245°C, Reflow solder capable to 260°C
RoHS/ELV Compliance History	Always was RoHS compliant
UL Flammability Rating	UL 94V-0
Other	
Brand	TE Connectivity

Related Products

Not quite the product you're looking for?
[Find Similar Products](#)

[View Part in Product Feature Selector](#)

[Check for Tooling](#)