

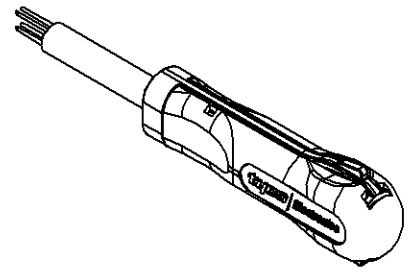
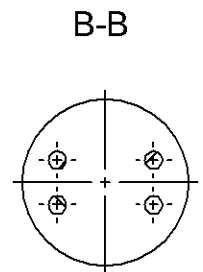
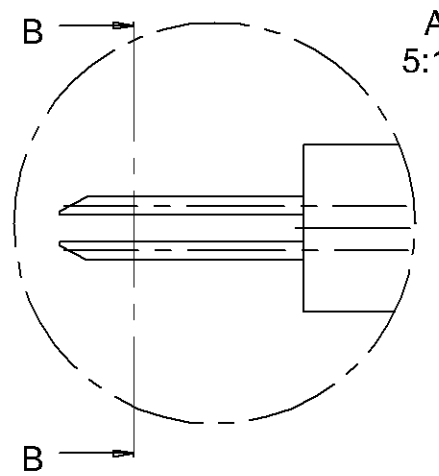
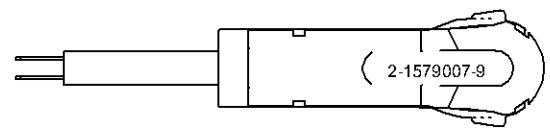
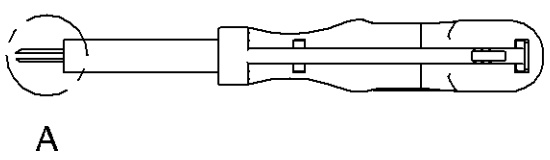
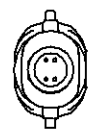
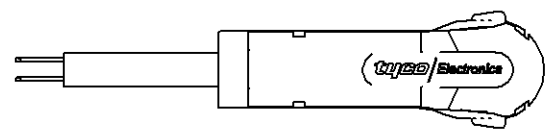
DIN 15 716
C-2-1579007-9

PASSNASS	ABMSS

PROJECT NO. _____ USED ON _____

THIS DRAWING IS A CONTROLLED DOCUMENT FOR THE MANUFACTURE OF THE PRODUCT AND THE CONTROLLED DOCUMENTS SHOULD BE CONTROLLED FOR THE LATEST REVISION.

DIESER ZEICHNUNGSDRUCK IST EIN DURCH UNF. INCORPORATED KONTROLLIERTES DOKUMENT FÜR DIE HERSTELLUNG DES PRODUKTES UND DIE KONTROLLIERTEN DOKUMENTE SOLLTEN FÜR DIE NEUESTE REVISION KONTROLLIERT WERDEN.



FOR CONTACTS / HOUSINGS:
BSK

PREZISANSTOLERANZEN NACH DIN 7168 (Werte in µm)
1) ABWICHUNG VON DIN 7168 2) LÄNGE DES KONTAKTENSCHWELLS

NENNMASS	0,5	3	6	30	120	400
BEREICH 1) BIS	3	6	30	120	400	1000
LÄNGEN-MASS	±0,05	±0,08	±0,1	±0,15	±0,2	±0,3
MASS	MITTEL	±0,1	±0,1	±0,2	±0,3	±0,8
RADIEN U. FASEN	±0,2	±0,3	±1	±2	±4	±4
WINKELABWICHUNG 1) 2)	±1°	±1°	±30'	±30'	±10'	±5'

GENERAL TOLERANCES ACC. TO DIN 7168 (VALUES IN µm)
1) DEVIATING FROM DIN 7168 2) LENGTH OF SHORT ANGLE SIDE

LOC	-	-	-	-	-
AI	-	-	-	-	-
DIST	-	-	-	-	-

TEIL- ODER BEREICH-NR., MIT PRÜFSTREICH-NR. (-) VIE. GEZ., REVISION-STATUS UND LÖSUNGSSYMBOLE. GEGENWÄRTIG: PART TO BE MARKED WITH PH, DASH NO. (-) AS SHOWN, REV., STATUS AND VENDOR'S MARK ON AREA N...

ÖBERFLÄCHENVERGLEICHSTABELLE

Ra	1,6	0,8	0,4	0,2
Rz	6,3	3,2	1,6	0,8

ALLE UNKANTIGE KANTEN 0,2x45° ENTGRATEN
REMOVE BURRS, BREAK SHARP EDGES 0,2x45°

A	ECN EGC0-0000-00	00.00.2000	-	-	-
P	LTR	REVISION RECORD	DATE	DWN	APVD

FINISH	DWN	06.11.2006	MATERIAL	HEAT TREAT
DIMENSIONS	mm	TOLERANCES UNLESS OTHERWISE SPECIFIED		
	0 PLC	-	MH -E	-
	1 PLC	-	140	-
	2 PLC	-	-	-
	3 PLC	-	-	-
ANGLE	-	SURFACE TEXTURE		

NAME	EXTRACTION TOOL		Gewicht / Weight	0,000kg
SCALE	1:1	SIZE	A3	REV
DRAWING NO.	C-2-1579007-9		SHEET	1 OF 1
DATE	06.11.2006	APVD	tyco Electronics	
DWN	m. pearson	CHK	tyca Electronics AMP GmbH D - 64625 Bensheim	

THIS DRAWING IS CONTROLLED AND IS SUBJECT TO CHANGE WITHOUT NOTICE. THIS DRAWING IS A CONTROLLED DOCUMENT FOR THE MANUFACTURE OF THE PRODUCT AND THE CONTROLLED DOCUMENTS SHOULD BE CONTROLLED FOR THE LATEST REVISION.

D
C
B
A