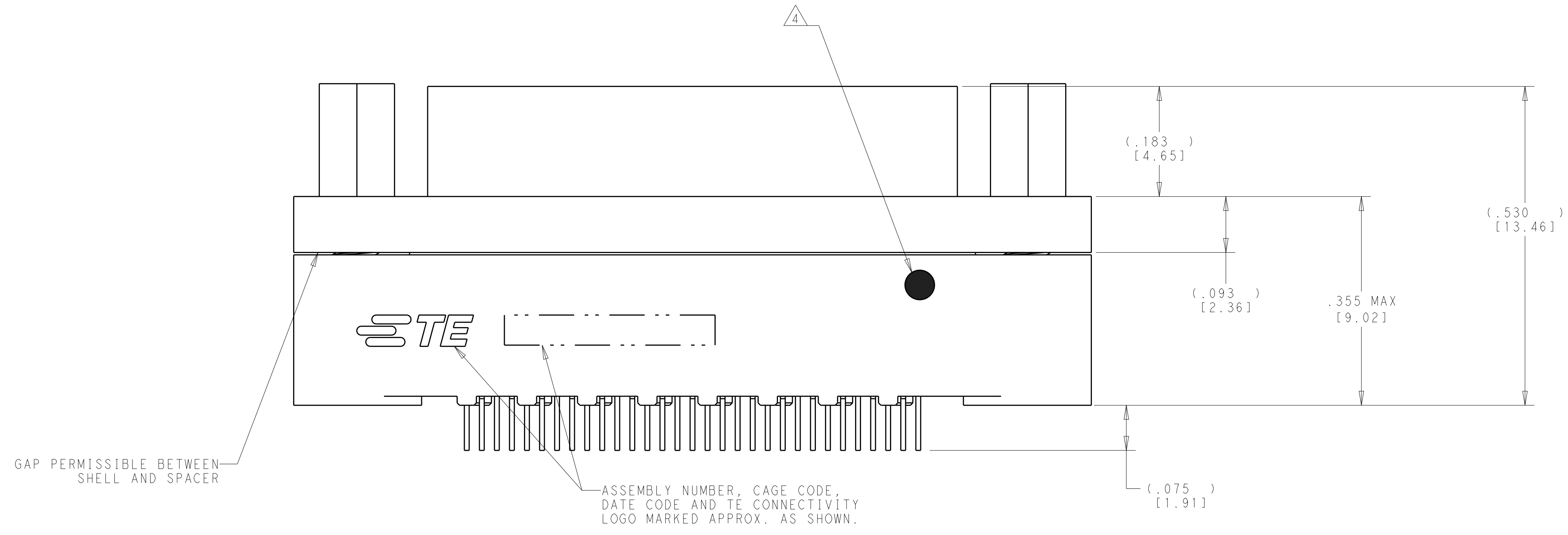
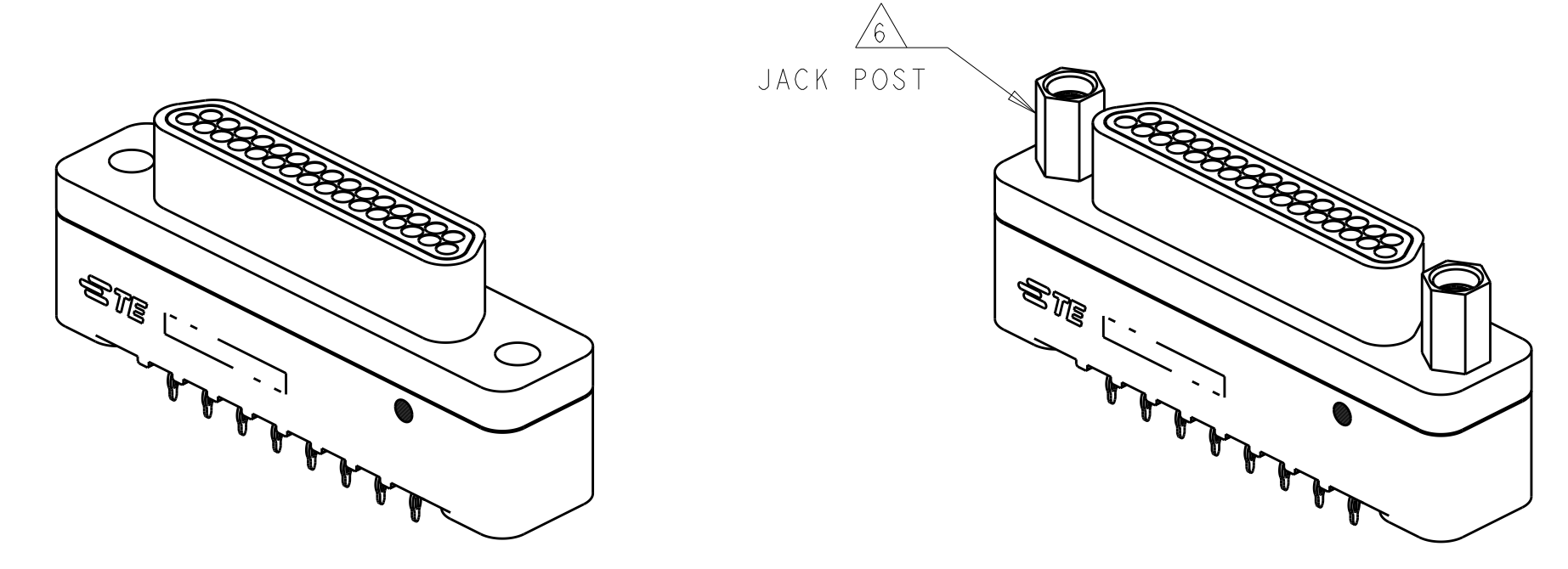
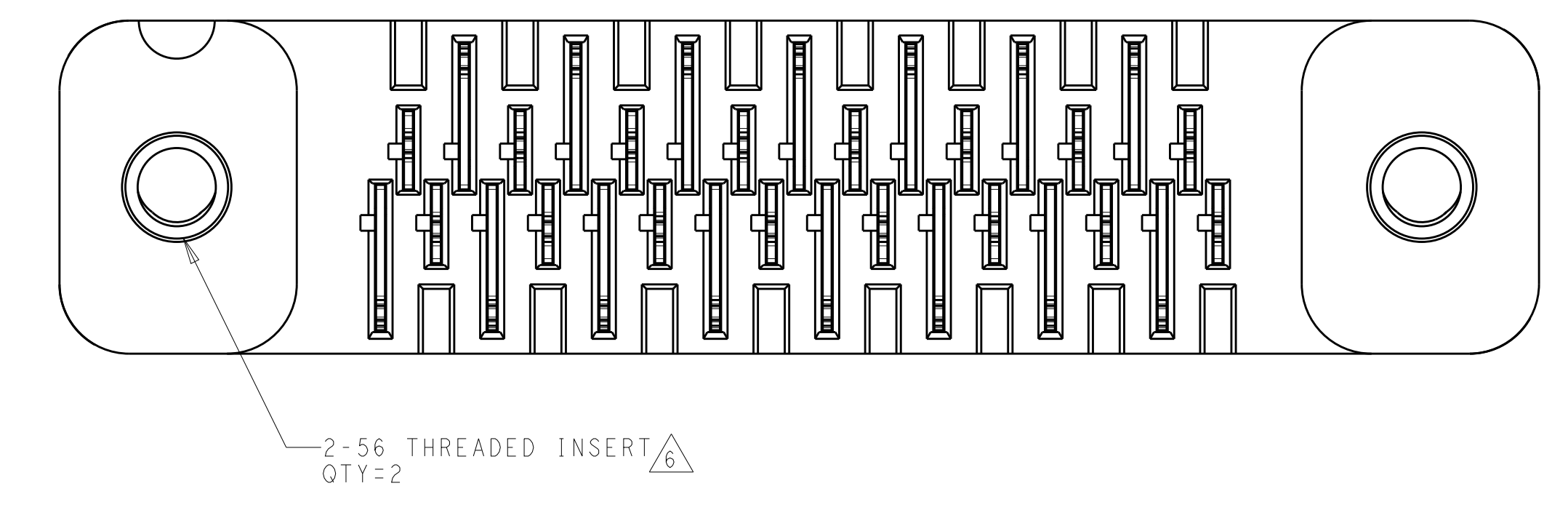
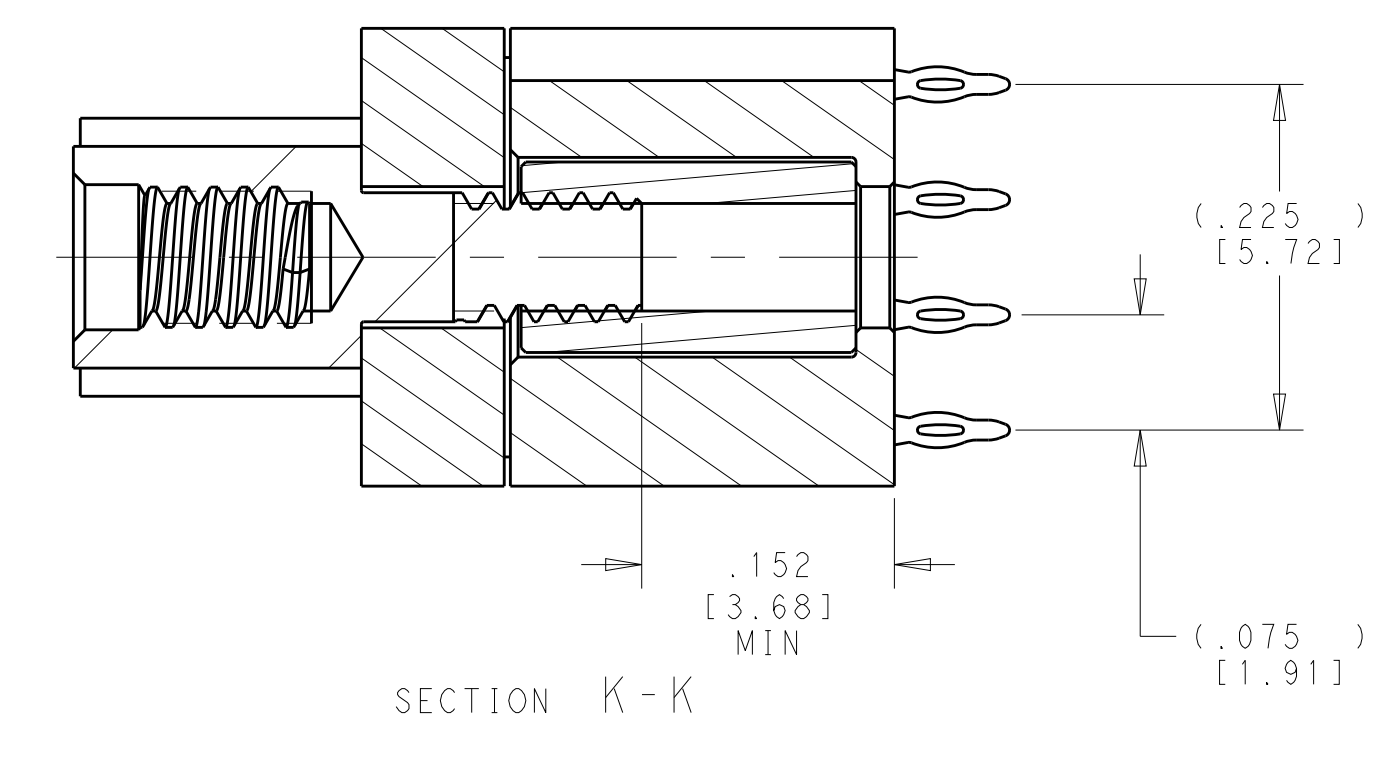
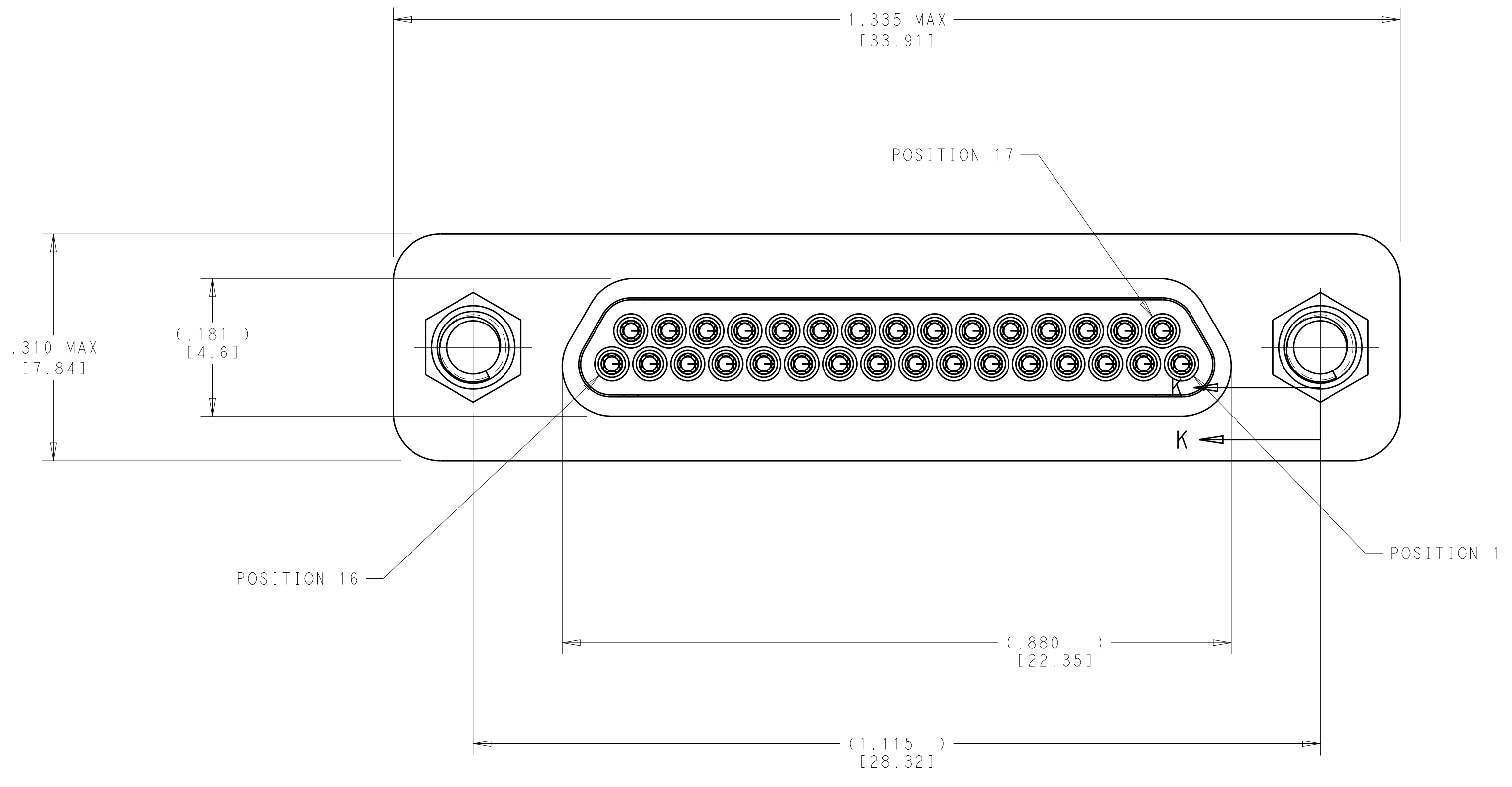


REVISIONS				
REV	DATE	BY	CHK	APPD
1	PROPOSED	20200316	DCB	KA



CONTACT FINISH	CONTACT MATERIAL	INSULATOR	SHELL MATERIAL	CONTACT MATERIAL	PART NO
Au	THREADED INSERT / JACK POST	BLACK ZINC	ALUMINUM	TBD	3-2302733-0
SnPb	THREADED INSERT / JACK POST	BLACK ZINC	ALUMINUM	TBD	2-2302733-9
Au	THRU-HOLE	BLACK ZINC	ALUMINUM	TBD	2-2302733-8
SnPb	THRU-HOLE	BLACK ZINC	ALUMINUM	TBD	2-2302733-7
Au	THREADED INSERT	BLACK ZINC	ALUMINUM	TBD	2-2302733-6
SnPb	THREADED INSERT	BLACK ZINC	ALUMINUM	TBD	2-2302733-5
Au	THREADED INSERT / JACK POST	PTFE	ALUMINUM	TBD	2-2302733-4
SnPb	THREADED INSERT / JACK POST	PTFE	ALUMINUM	TBD	2-2302733-3
Au	THRU-HOLE	PTFE	ALUMINUM	TBD	2-2302733-2
SnPb	THRU-HOLE	PTFE	ALUMINUM	TBD	2-2302733-1
Au	THREADED INSERT	PTFE	ALUMINUM	TBD	2-2302733-0
SnPb	THREADED INSERT	PTFE	ALUMINUM	TBD	1-2302733-9
Au	THREADED INSERT / JACK POST	PASSIVATED	STAINLESS STEEL	TBD	1-2302733-8
SnPb	THREADED INSERT / JACK POST	PASSIVATED	STAINLESS STEEL	TBD	1-2302733-7
Au	THRU-HOLE	PASSIVATED	STAINLESS STEEL	TBD	1-2302733-6
SnPb	THRU-HOLE	PASSIVATED	STAINLESS STEEL	TBD	1-2302733-5
Au	THREADED INSERT	PASSIVATED	STAINLESS STEEL	TBD	1-2302733-4
SnPb	THREADED INSERT	PASSIVATED	STAINLESS STEEL	TBD	1-2302733-3
Au	THREADED INSERT / JACK POST	CADMIUM	ALUMINUM	TBD	1-2302733-2
SnPb	THREADED INSERT / JACK POST	CADMIUM	ALUMINUM	TBD	1-2302733-1
Au	THRU-HOLE	CADMIUM	ALUMINUM	TBD	1-2302733-0
SnPb	THRU-HOLE	CADMIUM	ALUMINUM	TBD	2302733-9
Au	THREADED INSERT	CADMIUM	ALUMINUM	TBD	2302733-8
SnPb	THREADED INSERT	CADMIUM	ALUMINUM	TBD	2302733-7
Au	THREADED INSERT / JACK POST	NICKEL	ALUMINUM	TBD	2302733-6
SnPb	THREADED INSERT / JACK POST	NICKEL	ALUMINUM	TBD	2302733-5
Au	THRU-HOLE	NICKEL	ALUMINUM	TBD	2302733-4
SnPb	THRU-HOLE	NICKEL	ALUMINUM	TBD	2302733-3
Au	THREADED INSERT	NICKEL	ALUMINUM	TBD	2302733-2
SnPb	THREADED INSERT	NICKEL	ALUMINUM	TBD	2302733-1
CONTACT TAIL PLATING	MOUNTING STYLE	SHELL PLATING	SHELL MATERIAL	MICRODOT PART NO	PART NO

- MATERIAL: SHELL: SEE TABLE; CONTACT: COPPER ALLOY; INSULATOR: THERMOPLASTIC; COLOR: BLACK; LEAD ORGANIZER: THERMOPLASTIC; COLOR: BLACK; OPTIONAL HARDWARE: STAINLESS STEEL.
- CONTACT FINISH: MATING AREA: GOLD 50μm [1.27μm] Au MIN OVER 30μm [0.76μm] Ni MIN.; COMPLIANT PIN AREA: 15μm [0.51μm] MIN BRIGHT SnPb OVER 50μm [1.27μm] MIN Ni.
- REFERENCE APPLICATION SPEC 114-163000 FOR RECOMMENDED PCB LAYOUT, PLATED THROUGH HOLE DIAMETER AND PLATING THICKNESS. DATUMS AND BASIC DIMENSIONS ESTABLISHED BY CUSTOMER.
- POSITION 1 SHALL BE INDICATED BY AN IDENTIFIABLE MARK, LOCATED APPROXIMATELY AS SHOWN ON THE POSITION 1 SIDE OF THE CONNECTOR FLANGE. THIS MARK SHALL BE INCLUDED AS PART OF THE PART MARKING INFORMATION.
- ALL DIMENSIONS AND REQUIREMENTS ARE PER MIL-DTL-83513/28 (EXCEPT COMPLIANT PINS & PART MARKING).
- THREADED INSERT AND JACK POST 2-56 UNC 2-B CONFIGURATION OPTIONAL.
- CONTACT FINISH: MATING AREA: GOLD 50μm [1.27μm] Au MIN OVER 30μm [0.76μm] Ni MIN.; COMPLIANT PIN AREA: 15μm [0.51μm] MIN Au OVER 50μm [1.27μm] MIN Ni.

THIS PRINT IS UNQUALIFIED PRODUCT CONTACT PRODUCT ENGINEERING BEFORE USING THIS PRINT

UNQUALIFIED PRODUCT CONTACT PRODUCT ENGINEERING BEFORE USING THIS PRINT

THIS DRAWING IS A CONTROLLED DOCUMENT.

DATE: 24JUN2016  
 BY: J. BELACK  
 CHK: T. ANNIS  
 APPD: T. ANNIS

PRODUCT SPEC: 108-163000  
 APPLICATION SPEC: 114-163000

SCALE: 4:1 SHEET 1 OF 1 REV 1

STE TE Connectivity

PLUG ASSY, VERTICAL 2 ROW, 31 POSITION, MICRODOT PRESS-FIT

SIZE: A0 CASE CODE: DRAWING NO: 2302733