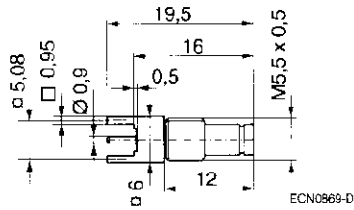


Series 1.0/2.3 (50 Ω/75 Ω) (Continued)

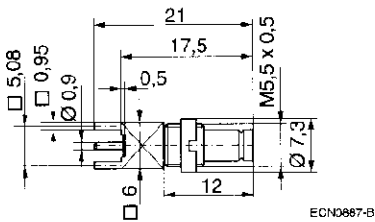
Connectors (Continued)



Bulkhead Jack with PC Board Connection

Coupling Type	Part Number
A,C,F	3-1393670-6

packing unit = 100

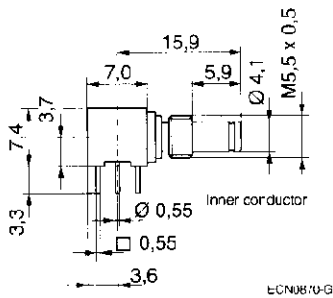


Bulkhead Jack with PC Board Connection

Coupling Type	Part Number
A,C,F	8-1393670-3

packing unit = 100

Mounting holes as with 3-1393670-4; see page 128

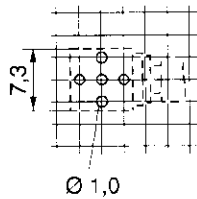


Bulkhead Angle Jack with PC Board Connection

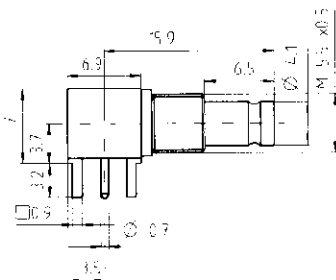
Coupling Type	Part Number
A,C,F	3-1393670-9

packing unit = 100

Mounting holes



Pitch 2.54 mm



Bulkhead Angle Jack with PC Board Connection

Coupling Type	Part Number
A,C,F	4-1393670-0

packing unit = 100

Mounting holes as with 3-1393670-4; see page 128

Input/Output Connectors