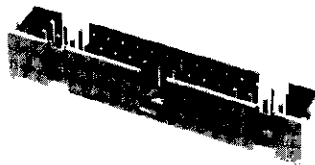




AMP-LATCH Connectors (Continued)

Low Profile Headers—Shrouded High Temperature Housings, with 3.81 [.150] End Dimension, Double Row, .100 x .100 [2.54 x 2.54] Centers

0.64 [.025] Square Straight Post (with Board Retention Feature)



Material and Finish:

Housing—Gray thermoplastic, 94V-0 rated, flame retardant, high temperature compatible

Contacts—Copper alloy, duplex plated (See chart, below)

Related Product Data:

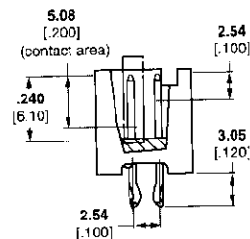
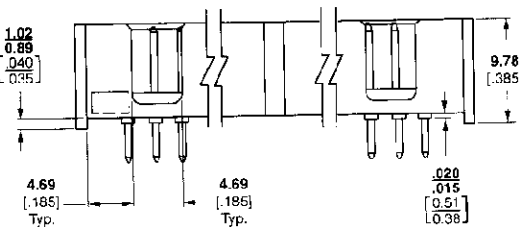
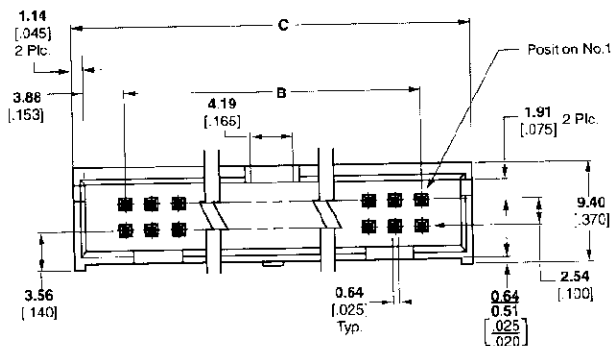
Electrical Characteristics — Page 486

Mateable Connectors — Pages 489, 490

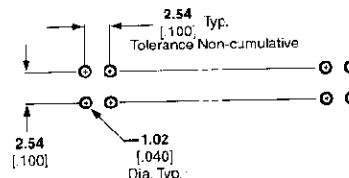
Plating Specifications:

Duplex¹ — 0.00038 [.000015] gold on contact area, 0.00254-0.00508 [.000100-.000200] tin-lead on solder area, with entire post underplated 0.00127 [.000050] nickel

Duplex² — 0.00076 [.000030] gold on contact area, 0.00254-0.00508 [.000100-.000200] tin-lead on solder area, with entire post underplated 0.00127 [.000050] nickel



No. of Pos.	Dimensions		Contact Plating	Part No.
	B	C		
10	10.16	20.32	Duplex ¹	104338-1
	.400	.800	Duplex ²	—
14	15.24	25.40	Duplex ¹	104338-2
	.600	1.000	—	—
16	17.78	27.94	Duplex ¹	104338-3
	.700	1.100	—	—
20	22.86	33.02	Duplex ¹	104338-4
	.900	1.300	Duplex ²	—
24	27.94	35.56	Duplex ¹	104338-5
	1.100	1.400	—	—
26	30.48	40.64	Duplex ¹	104338-6
	1.200	1.600	—	—
34	40.64	50.80	Duplex ¹	104338-7
	1.600	2.000	Duplex ²	—
40	48.26	58.42	Duplex ¹	104338-8
	1.900	2.300	Duplex ²	—
40	48.26	58.42	Duplex ¹	104582-2
	1.900	2.300	—	—
50	60.96	71.12	Duplex ¹	104338-9
	2.400	2.800	Duplex ²	—



Recommended Hole Layout For Manual Insertion