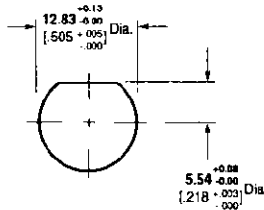


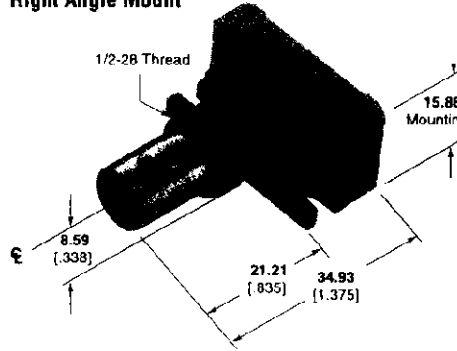
BNC Connectors, 50 Ohm (Continued)

**Jacks with Mounting Flanges
PC Board/Panel Mount**

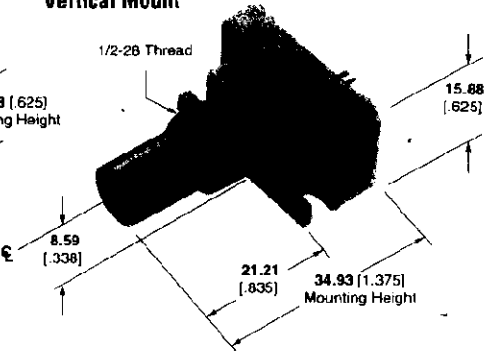


Maximum Panel Thickness 6.1 [240]
Recommended Panel Cutout

Right Angle Mount



Vertical Mount



Body Material	Center Contact Plating	Part No.	
		Right Angle Mount	Vertical Mount
VALOX, White	Tin	226978-1	—
	Gold	226978-3	226987-7

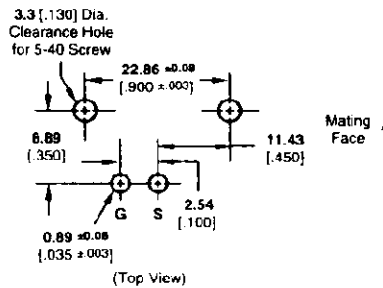
Lockwasher and Jam Nut



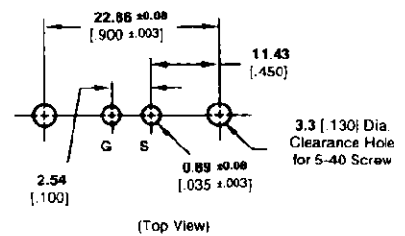
Part No. 1-329632-2

Part No. 1-329631-2

Right Angle Mount



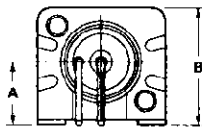
Vertical Mount



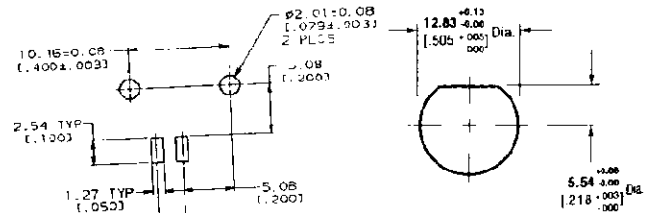
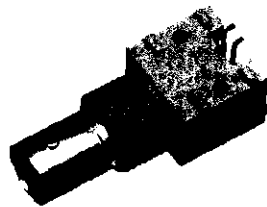
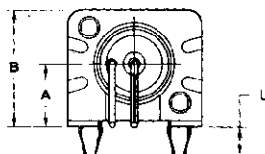
Recommended PC Board Layouts

**Surface Mount
Right Angle Jacks**

With Mounting Holes (no post)



With Compliant Post



RECOMMENDED PCB CONFIGURATION

Recommended Panel Cutout

Body Material	Center Contact Plating	Dimensions			Without Mounting Post	With Compliant Post
		A	B	L		
High Temp	Gold	6.91 .272	13.18 .519	—	415715-1*	—
	Gold	6.91 .272	13.18 .519	2.79 .110	—	415715-2*

*IR reflow compatible.
Plating: Gold - 0.00076 [0.00030] thick.