

4

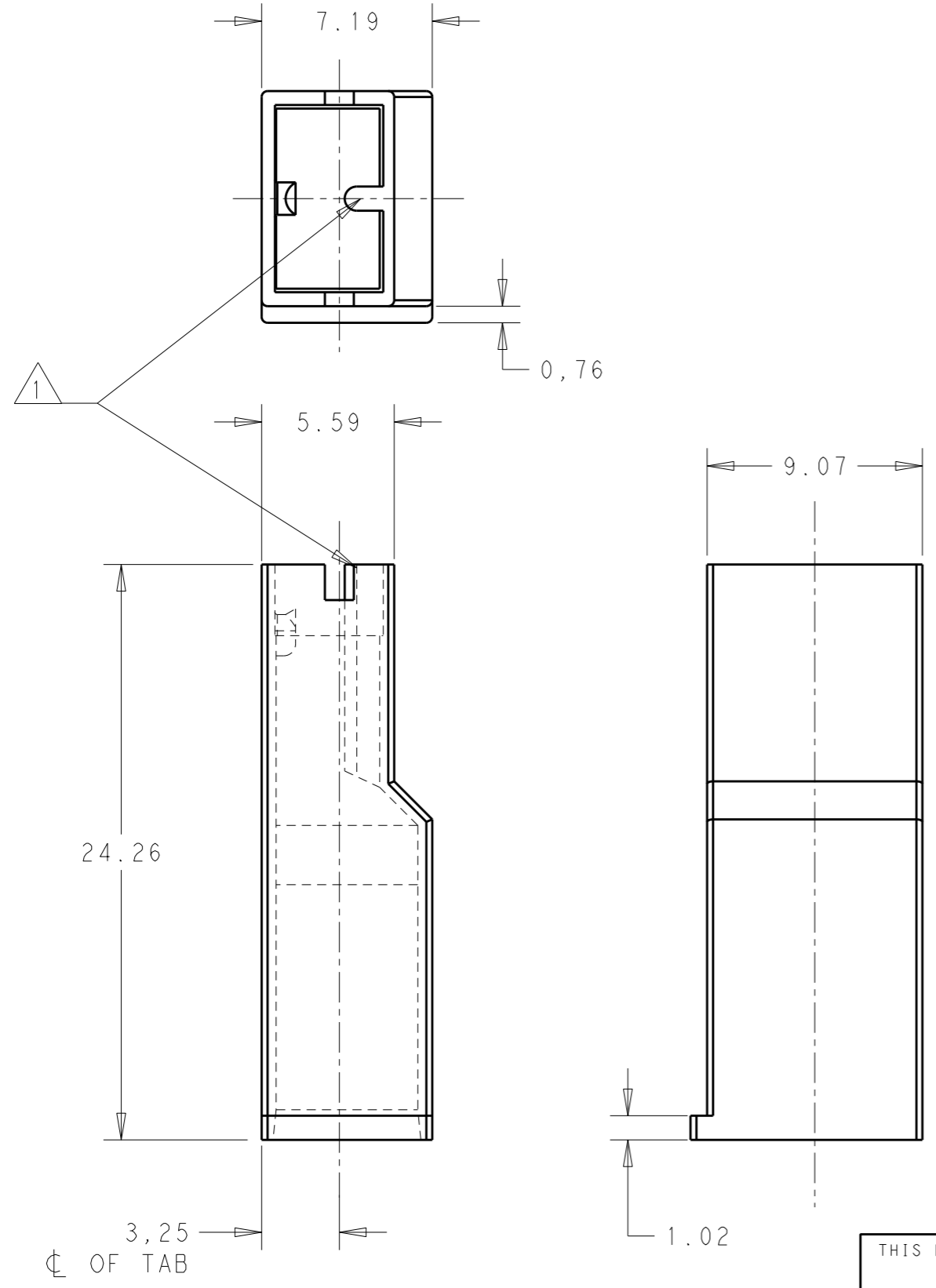
3

2

1

THIS DRAWING IS UNPUBLISHED. RELEASED FOR PUBLICATION 20  
 © COPYRIGHT 20 TE CONNECTIVITY ALL RIGHTS RESERVED.

LOC	DIST	REVISIONS			
P	LTR	DESCRIPTION	DATE	DWN	APVD
AP	-				
	A	RELEASED	14JUN2011	HC	WLS
	B	REV. BY ECO-12-014195	03AUG2012	HC	WLS



1 -RIB MAY EXTEND TO FRONT OF HOUSING.  
 2 -MATERIAL: PA 6.6 ACC. TO SPEC. IEC 60335 GWT 850°C - WITHOUT FLAME.

COLOR	MATERIAL	PART NUMBER
NATURAL	PA 6.6 - UL94 - V0 - GWT 2	1-2133341-2
NATURAL	PA 6.6 - UL94 - V0	1-2133341-1
BLUE	PA 6.6 - UL94 - V2	2133341-6
GREEN		2133341-5
YELLOW		2133341-4
RED		2133341-3
NATURAL		2133341-2
BLACK		2133341-1

THIS DRAWING IS A CONTROLLED DOCUMENT.		DWN 25MAY2011 H.C.CANTERI	<b>STE</b> TE Connectivity	
		CHK 25MAY2011 W.L.STEFANI		
DIMENSIONS: mm		APVD -	NAME MKI .250 POSITIVE LOCK RECEPTACLE INSULATOR MKI .250 POSITIVE LOCK	
TOLERANCES UNLESS OTHERWISE SPECIFIED: 0 PLC ±- 1 PLC ±0,5 2 PLC ±0,5 3 PLC ±- 4 PLC ±- ANGLES ±- FINISH -		PRODUCT SPEC 108-3252	SIZE A3	
MATERIAL SEE TABLE		APPLICATION SPEC 114-2153	CAGE CODE 00779	DRAWING NO C-2133341
		WEIGHT -	RESTRICTED TO -	
		CUSTOMER DRAWING	SCALE 4/1	SHEET 1 OF 1 REV B