



Automotive Parts > Automotive Connector Accessories > Automotive Connector EMC Shielding > DT Highspeed Connector shielding



Connector Shielding Accessory Type: **Shield**

Primary Product Material: **Copper Alloy**

[All DT Highspeed Connector shielding \(5\)](#)

Features

Product Type Features

Sealable	Yes
Connector Shielding Accessory Type	Shield

Configuration Features

Number of Positions	2
---------------------	---

Body Features

Primary Product Material	Copper Alloy
--------------------------	--------------

Usage Conditions

Operating Temperature Range	-40 – 125 °C[-40 – 257 °F]
-----------------------------	----------------------------

Product Compliance

[For compliance documentation, visit the product page on TE.com>](#)

EU RoHS Directive 2011/65/EU	Compliant
EU ELV Directive 2000/53/EC	Compliant
China RoHS 2 Directive MIIT Order No 32, 2016	有害物质含量符合标准要求 No Restricted Substance(s) Above Threshold

EU REACH Regulation (EC) No. 1907/2006



Current ECHA Candidate List: JUNE 2025 (250)
 Candidate List Declared Against: JUNE 2025 (250)
 Does not contain REACH SVHC

Halogen Content

Low Halogen - Br, Cl, F < 900 ppm per homogenous material. Also BFR/CFR/PVC Free

Solder Process Capability

Not reviewed for solder process capability

Product Compliance Disclaimer

This information is provided based on reasonable inquiry of our suppliers and represents our current actual knowledge based on the information they provided. This information is subject to change. The part numbers that TE has identified as EU RoHS compliant have a maximum concentration of 0.1% by weight in homogenous materials for lead, hexavalent chromium, mercury, PBB, PBDE, DBP, BBP, DEHP, DIBP, and 0.01% for cadmium, or qualify for an exemption to these limits as defined in the Annexes of Directive 2011/65/EU (RoHS2). Finished electrical and electronic equipment products will be CE marked as required by Directive 2011/65/EU. Components may not be CE marked. Additionally, the part numbers that TE has identified as EU ELV compliant have a maximum concentration of 0.1% by weight in homogenous materials for lead, hexavalent chromium, and mercury, and 0.01% for cadmium, or qualify for an exemption to these limits as defined in the Annexes of Directive 2000/53/EC (ELV). Regarding the REACH Regulation, the information TE provides on SVHC in articles for this part number is based on the latest European Chemicals Agency (ECHA) 'Guidance on requirements for substances in articles' posted at this URL: <https://echa.europa.eu/guidance-documents/guidance-on-reach>

Compatible Parts




TE Part # 2386215-1
 HDR SUB ASSY, 2POS, PIN DIA 1.0, 90 DEG



TE Part # 0462-201-2031
 SOC, SOLID, SIZE 20, 20AWG, AU




TE Part # CAT-AI5-DHCS
 DT Highspeed Connector shielding



TE Part # HDT-48-00
 CRIMP TOOL, HAND


Also in the Series | DEUTSCH DT Highspeed




Automotive Connector Caps & Covers (4)



Automotive Connector EMC Shielding (6)



Automotive Housings(3)



Automotive Seals & Cavity Plugs(3)



Data Connectivity Housings(1)

Customers Also Bought



TE Part #1718295-1
COVER FOR 62 POS TAB HEADER
ASSY



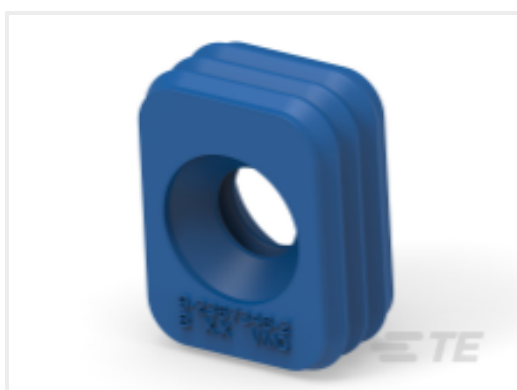
TE Part #9-2367341-1
2POS,CSS SIZE 20,PIN OUTER HSG
ASSY



TE Part #9-2367345-1
SOC CONN CVR ASSY,2POS,CSS
SIZE 20,180



TE Part #9-2367345-2
SOC CONN CVR ASSY,2POS,CSS
SIZE 20,180



TE Part #CAT-AI5-DHCSAP
DT Highspeed Connectors seals and
plugs



TE Part #CAT-AI5-DHCS
DT Highspeed Connector shielding
plugs

Documents

Product Drawings

CU ALLOY,SHIELD ASSY,CONN HSG,DATA DT

English

CAD Files

3D PDF

3D

Customer View Model

[ENG_CVM_CVM_9-2370714-1_A.2d_dxf.zip](#)

English

Customer View Model

[ENG_CVM_CVM_9-2370714-1_A.3d_igs.zip](#)

English

Customer View Model

[ENG_CVM_CVM_9-2370714-1_A.3d_stp.zip](#)

English

By downloading the CAD file I accept and agree to the [Terms and Conditions](#) of use.



Product Specifications

Product Specification

English