



## Product Compliance

[For compliance documentation, visit the product page on TE.com>](#)

EU RoHS Directive 2011/65/EU	Compliant with Exemptions
EU ELV Directive 2000/53/EC	Compliant with Exemptions
China RoHS 2 Directive MIIT Order No 32, 2016	Restricted Materials Above Threshold
EU REACH Regulation (EC) No. 1907/2006	Current ECHA Candidate List: JAN 2025 (247) Candidate List Declared Against: JAN 2025 (247) SVHC > Threshold: Pb (2.5% in 3440316) <b>Article Safe Usage Statements:</b> Do not eat, drink or smoke when using this product. Wash thoroughly after handling. Recycle if possible and dispose of the article by following all applicable governmental regulations relevant to your geographic location.
Halogen Content	Low Halogen - Br, Cl, F, I < 900 ppm per homogenous material. Also BFR/CFR/PVC Free
Solder Process Capability	Not reviewed for solder process capability

### Product Compliance Disclaimer

This information is provided based on reasonable inquiry of our suppliers and represents our current actual knowledge based on the information they provided. This information is subject to change. The part numbers that TE has identified as EU RoHS compliant have a maximum concentration of 0.1% by weight in homogenous materials for lead, hexavalent chromium, mercury, PBB, PBDE, DBP, BBP, DEHP, DIBP, and 0.01% for cadmium, or qualify for an exemption to these limits as defined in the Annexes of Directive 2011/65/EU (RoHS2). Finished electrical and electronic equipment products will be CE marked as required by Directive 2011/65/EU. Components may not be CE marked. Additionally, the part numbers that TE has identified as EU ELV compliant have a maximum concentration of 0.1% by weight in homogenous materials for lead, hexavalent chromium, and mercury, and 0.01% for cadmium, or qualify for an exemption to these limits as defined in the Annexes of Directive 2000/53/EC (ELV). Regarding the REACH Regulation, the information TE provides on SVHC in articles for this part number is based on the latest European Chemicals Agency (ECHA) 'Guidance on requirements for substances in articles' posted at this URL: <https://echa.europa.eu/guidance-documents/guidance-on-reach>

### Compatible Parts



TE Part # 2177786-5  
5POS, MIXED,HSG, IEC62196-2 TYPE 2,Left



TE Part # 2177786-1  
5POS, MIXED,HSG, IEC62196-2 TYPE 2,BK



TE Part # 2344189-2  
TYPE 2,CHARGE INLET ASSY,3 PHASE



TE Part # 2344189-1  
TYPE 2,CHARGE INLET ASSY,3 PHASE



TE Part # 2177786-3  
5POS, MIXED,HSG, IEC62196-2 TYPE 2,Top



TE Part # 2177786-7  
5POS, MIXED,HSG, IEC62196-2 TYPE 2,right



TE Part # 2-2208885-2  
HV,CHARGE INLET TYPE2,HYB ASSY



TE Part # 2177786-2  
7POS, MIXED,HSG, IEC62196-2 TYPE 2,BK



TE Part # 2344189-3  
TYPE 2,CHARGE INLET CARRIER ASSY

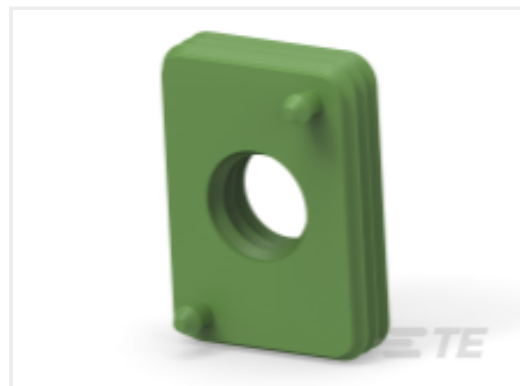
### Customers Also Bought



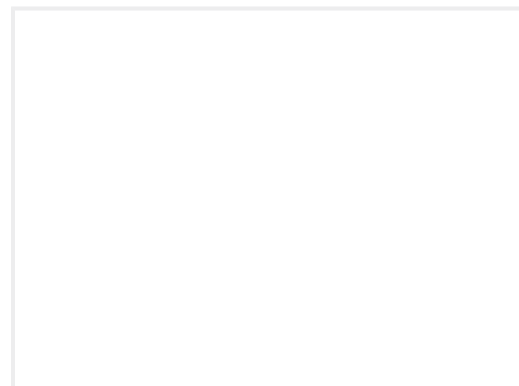
TE Part #2138558-2  
2P GENERATION Y Cap, Single-Pi



TE Part #2299123-2  
1POS,P2P,SOC HSG ASSY,180DEG, CODB,UL94V0



TE Part #2441093-2  
SWS,PCON18,CSJ1800 UNSHIED 90DEG 50SQ



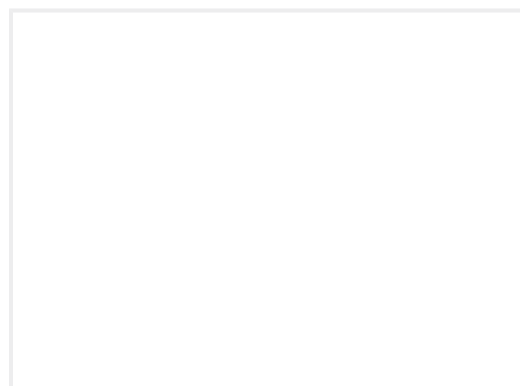
TE Part #9-2177813-2  
PIN DIA 3.0, CP



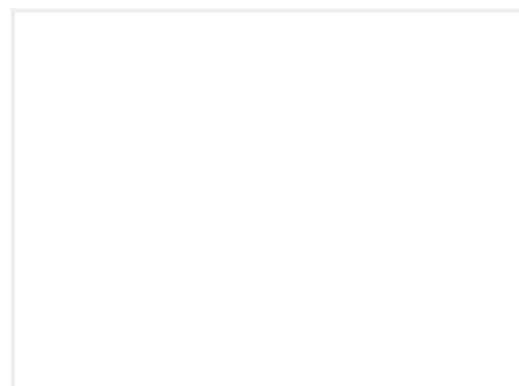
TE Part #2310488-1  
PROTECTION COVER



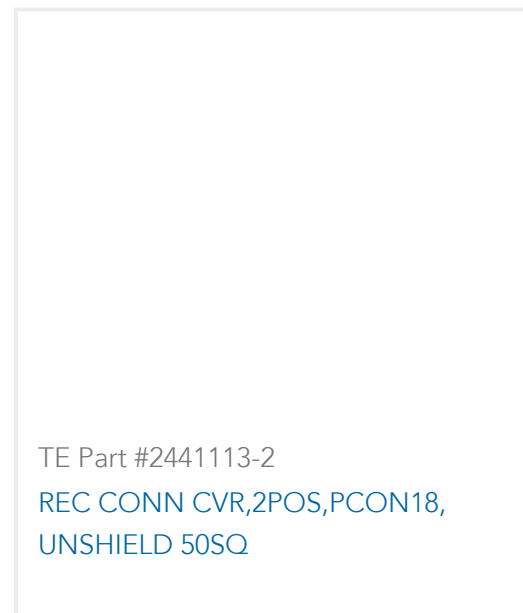
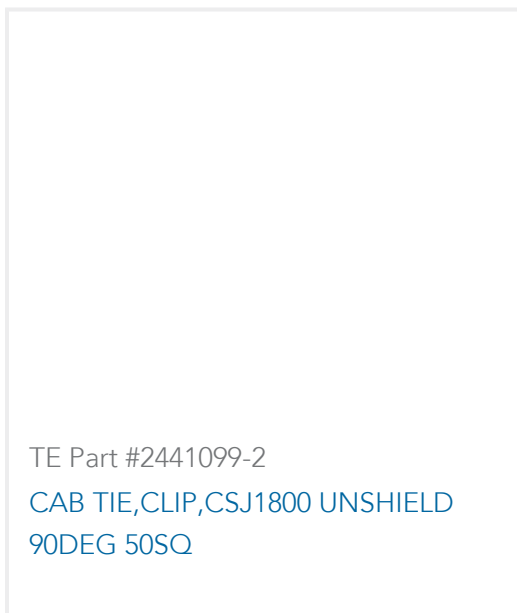
TE Part #2401985-1  
CSJ18 90DEG USW, TERMINAL ASS



TE Part #1-2411705-1  
SPACER,4POS,AMP MCP 6.3/4.8K



TE Part #2441091-2  
CABLE CLAMP,CSJ1800 UNSHIELD 90DEG 50SQ



## Documents

### Product Drawings

[PIN DIA 3.0, PP](#)

English

### CAD Files

[3D PDF](#)

3D

Customer View Model

[ENG\\_CVM\\_CVM\\_9-2177814-2\\_C.2d\\_dxf.zip](#)

English

Customer View Model

[ENG\\_CVM\\_CVM\\_9-2177814-2\\_C.3d\\_igs.zip](#)

English

Customer View Model

[ENG\\_CVM\\_CVM\\_9-2177814-2\\_C.3d\\_stp.zip](#)

English

By downloading the CAD file I accept and agree to the [Terms and Conditions](#) of use.

### Product Specifications

[Application Specification](#)

English