

DESCRIPTION/APPLICATION

Thomas & Betts provides a unique plug-in socket line allowing quick connection of circuits simultaneously without the use of tools.

They are designed to be wave-soldered to a PC board, after which the connector is plugged into the socket.

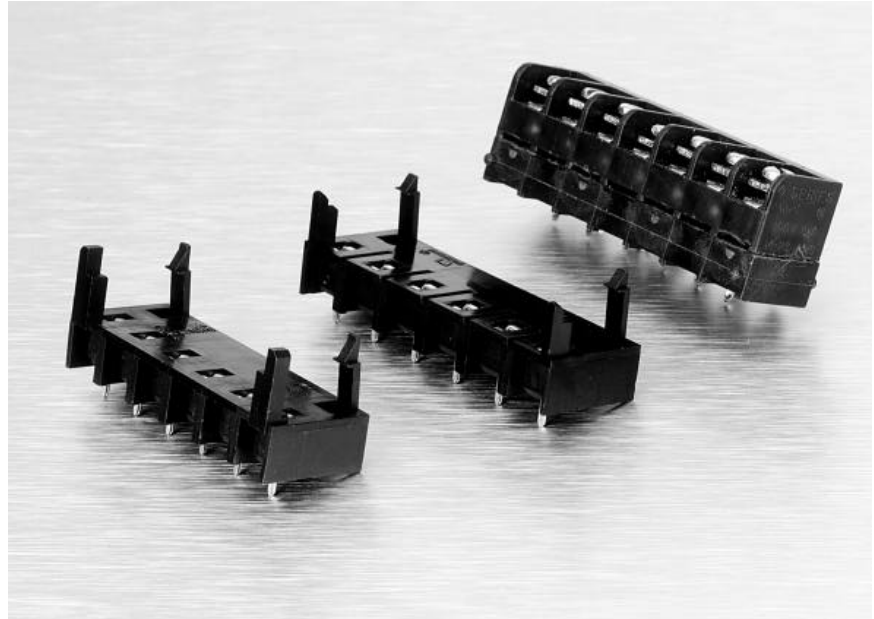
Mateability for the socket line is given below:

SOCKET SERIES	CONNECTOR SERIES
USB	RSB3, SSB3
4DTB	#4
RSB6B	RSB6
6DTB	#6

DESIGN ADVANTAGES

- End to end mounting of USB sockets maintain circuit spacing: Two 12 circuit USB sockets can mate with one 24 circuit SSB3 or RSB3.
- Secure mating with built-in locking arms
- High vibration versions with high withdrawal force available: Series 4DTB and 6DTB.

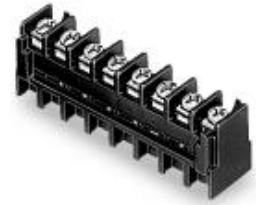
BARRIER STRIP SOCKETS



CONNECTOR INDEX

0.325"	Pitch, Series USB for RSB3 and SSB3	108
0.325"	Pitch, Series 4DTB for #4, High Vibration Version..	109
0.375"	Pitch, Series RSB6B for RSB6	110
0.375"	Pitch, Series 6DTB for #6, High Vibration Version..	111

0.325" PITCH
SERIES USB SOCKET
FOR SERIES RSB3 AND SSB3



USB3B08S & SSB3FP080202

PHYSICAL PROPERTIES

HOUSING MATERIAL: Polyamide, Type 6/6
FLAMMABILITY: UL94V-2
COLOR: Black

TERMINAL

TERMINALS CONTACT: Copper alloy, bright tin plating
PIN: Copper alloy, bright tin plating

MECHANICAL

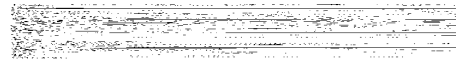
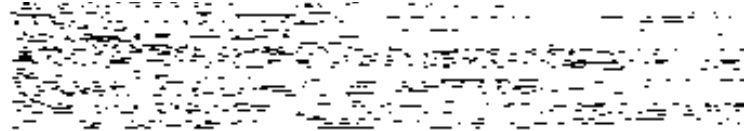
PITCH (TERMINAL SPACING): 0.325"
RECOMMENDED PCB HOLE DIA.: .055"
PULLOUT FORCE: 5-7 lbs.

ELECTRICAL PROPERTIES

MAXIMUM CURRENT: 10A
OPERATING VOLTAGE: 300V
DIELECTRIC WITHSTAND: 3500V

ENVIRONMENTAL PROPERTIES

OPERATING TEMPERATURE RANGE: -60°C to +105°C
(-76°F to +221°F)



Recommended PCB Hole Pattern

Ordering Information and Mating Table

CATALOG NUMBER	NO. OF CIRCUITS	DIMENSION A	DIMENSION B	MATING STRIP CATALOG NUMBER	MATING STRIP CATALOG NUMBER
USB3B02S	2	.650	.325	SSB3FP0202...	RSB3VP0212...
USB3B03S	3	.975	.650	SSB3FP0302...	RSB3VP0312...
USB3B04S	4	1.300	.975	SSB3FP0402...	RSB3VP0412...
USB3B05S	5	1.625	1.300	SSB3FP0502...	RSB3VP0512...
USB3B06S	6	1.950	1.625	SSB3FP0602...	RSB3VP0612...
USB3B07S	7	2.275	1.950	SSB3FP0702...	RSB3VP0712...
USB3B08S	8	2.600	2.275	SSB3FP0802...	RSB3VP0812...
USB3B09S	9	2.925	2.600	SSB3FP0902...	RSB3VP0912...
USB3B10S	10	3.250	2.925	SSB3FP1002...	RSB3VP1012...
USB3B11S	11	3.575	3.250	SSB3FP1102...	RSB3VP1112...
USB3B12S	12	3.900	3.575	SSB3FP1202...	RSB3VP1212...

NOTE: Mating SSB3 Barrier Strips require printed circuit pin terminal style "02."
Mating RSB3 Barrier Strips require printed circuit pin terminal style "12."



LR49571 E60980

0.325" PITCH
SERIES 4DTB (FOR SERIES #4)
MATED PAIR ASSEMBLY
HIGH VIBRATION VERSION

PHYSICAL PROPERTIES

Barrier Strip

HOUSING MATERIAL: Polyamide
FLAMMABILITY: UL94V-0
COLOR: Black
TERMINALS: Bright acid tin over copper alloy

Socket

HOUSING MATERIAL: Glass reinforced polyester
FLAMMABILITY: UL94V-0
COLOR: Black
TERMINALS: Bright acid-tin over copper alloy

Mechanical

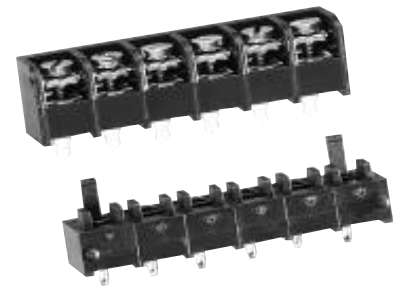
SCREWS: #4-40 steel, zinc plating with clear chromate coating. Wire clamping screws standard. Binding head screw with undercut optional.
PITCH (TERMINAL SPACING): 0.325" centers
RECOMMENDED PCB HOLE DIA.: .073"

ELECTRICAL PROPERTIES

MAX. CURRENT RATING: 20A
OPERATING VOLTAGE: 150V
WIRE RANGE: 14-22

ENVIRONMENTAL PROPERTIES

MAX. OPERATING TEMPERATURE:
Socket: 130° C
Barrier Strip: 105° C



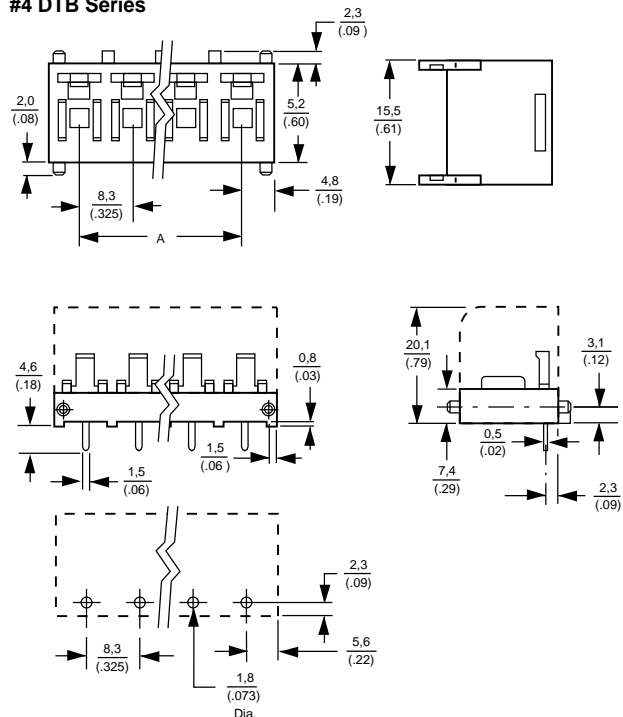
4DTB-06-000

ORDERING INFORMATION

4 **DTB** - **06** - **000**

- A** Contact Spacing
4 = 0.325" Centers
- B** Series
DTB = Socket
- C** No. of Circuits (Not positions)
02 through 10
- D** Screw Styles
000 = Slotted head screw with wire clamp plate
006 = Phil-slot head screw with wire clamp plate

#4 DTB Series



Printed Circuit Board Layout

Dimensions

TERMINALS	A
2	(0.325) 8,2
3	(0.65) 16,5
4	(0.97) 24,8
5	(1.30) 33,0
6	(1.63) 41,3
7	(1.95) 49,5
8	(2.28) 57,8
9	(2.60) 66,0
10	(2.92) 74,3



LR30811 E54800