

## 5MM PLUG-IN LOCKING CONNECTORS WITH CAGE CLAMP SERIES B52C4

### PHYSICAL PROPERTIES

#### Housing:

HOUSING MATERIAL: Polybutylene terephthalate (PBTP), GV 20

FLAMMABILITY: UL94V-0

COLOR: Blue or Black

#### Terminal:

CAGE CLAMP AND SOLDER PIN: Brass, tin plated

SCREW: M3 x 5,3mm, steel, zinc plated, yellow chromate treated

#### Mechanical:

PITCH (PIN SPACING): 5mm and 10mm

WIRE STRIP LENGTH: 7mm

RECOMMENDED TIGHTENING TORQUE: 0.8Nm (7.0 in-lbs)

### ELECTRICAL PROPERTIES

MAXIMUM CURRENT: 12A

OPERATING VOLTAGE: 300V

WIRE RANGE: 12-22 AWG

DIELECTRIC WITHSTAND: 16 KV/mm

### ENVIRONMENTAL PROPERTIES

OPERATING TEMPERATURE RANGE:

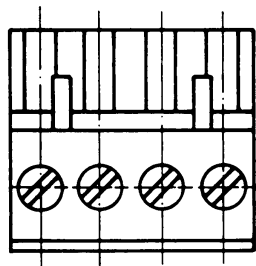
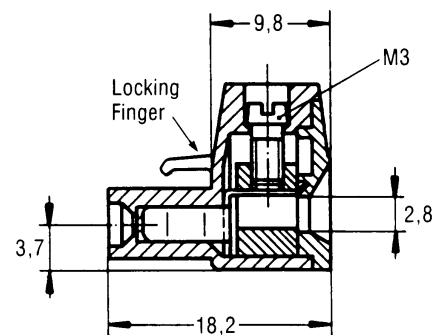
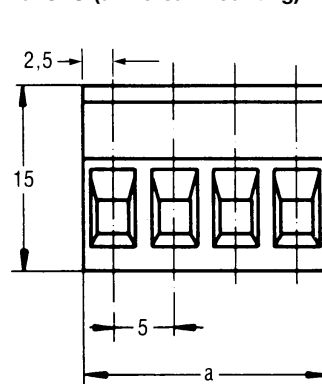
-30°C to +120°C Gold and Silver contact system

-30°C to +105°C Tin contact system



5mm and 10mm Pitch

### B52C4U (universal mounting)



### Ordering Information

| # OF TERMINALS | 5MM UNIVERSAL | 10MM UNIVERSAL |
|----------------|---------------|----------------|
| 2              | B52C4U02T     | B52C5U02T      |
| 3              | B52C4U03T     | B52C5U03T      |
| 4              | B52C4U04T     | B52C5U04T      |
| 5              | B52C4U05T     | B52C5U05T      |
| 6              | B52C4U06T     | B52C5U06T      |
| 7              | B52C4U07T     |                |
| 8              | B52C4U08T     |                |
| 9              | B52C4U09T     |                |
| 10             | B52C4U10T     |                |
| 11             | B52C4U11T     |                |
| 12             | B52C4U12T     |                |

NOTE: Add "B" suffix for black color. Minimum order 5000 pieces.

**5MM SHROUDED OPEN-END HEADERS  
(FOR SERIES B52C4 CONNECTORS)  
SERIES B72N4**



**5mm and 10mm Pitch**

**PHYSICAL PROPERTIES**

**Housing:**

HOUSING MATERIAL: Polybutylene terephthalate (PBTP), GV20

FLAMMABILITY: UL94V-0

COLOR: Blue or Black

**Terminal:**

SOLDER PIN: Brass, tin plated

**Mechanical:**

PITCH (PIN SPACING): 5mm and 10mm

RECOMMENDED PCB HOLE DIA.: 1,7mm

**ELECTRICAL PROPERTIES**

MAXIMUM CURRENT: 12A

OPERATING VOLTAGE: 250V

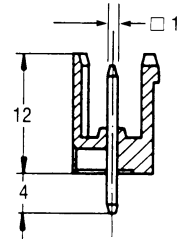
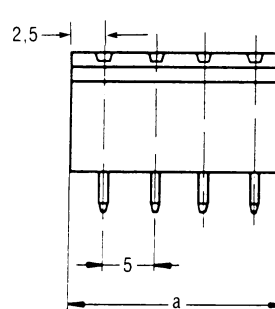
**ENVIRONMENTAL PROPERTIES**

OPERATING TEMPERATURE RANGE:

-30°C to +120°C Gold and Silver contact system

-30°C to +105°C Tin contact system

**B72N4V (vertical solder pins)**

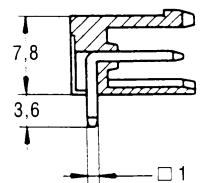
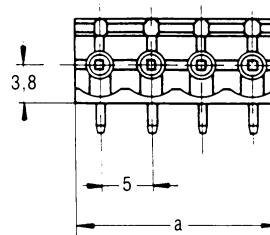


Formulas For Dimension "a"  
(N = Number of terminals)

5mm Headers:  
 $a = N \times 5$

10mm Headers:  
 $a = (N \times 10) - 5$

**B72N4H (horizontal solder pins)**



**Ordering Information**

| # OF TERMINALS | 5MM VERTICAL | 5MM HORIZONTAL | 10MM VERTICAL | 10MM HORIZONTAL |
|----------------|--------------|----------------|---------------|-----------------|
| 2              | B72N4V02T    | B72N4H02T      | B72N5V02T     | B72N5H02T       |
| 3              | B72N4V03T    | B72N4H03T      | B72N5V03T     | B72N5H03T       |
| 4              | B72N4V04T    | B72N4H04T      | B72N5V04T     | B72N5H04T       |
| 5              | B72N4V05T    | B72N4H05T      | B72N5V05T     | B72N5H05T       |
| 6              | B72N4V06T    | B72N4H06T      | B72N5V06T     | B72N5H06T       |
| 7              | B72N4V07T    | B72N4H07T      | B72N5V07T     | B72N5H07T       |
| 8              | B72N4V08T    | B72N4H08T      | B72N5V08T     | B72N5H08T       |
| 9              | B72N4V09T    | B72N4H09T      | B72N5V09T     | B72N5H09T       |
| 10             | B72N4V10T    | B72N4H10T      | B72N5V10T     | B72N5H10T       |
| 11             | B72N4V11T    | B72N4H11T      | B72N5V11T     | B72N5H11T       |
| 12             | B72N4V12T    | B72N4H12T      | B72N5V12T     | B72N5H12T       |
| 13             | B72N4V13T    | B72N4H13T      | —             | —               |
| 14             | B72N4V14T    | B72N4H14T      | —             | —               |
| 15             | B72N4V15T    | B72N4H15T      | —             | —               |
| 16             | B72N4V16T    | B72N4H16T      | —             | —               |
| 17             | B72N4V17T    | B72N4H17T      | —             | —               |
| 18             | B72N4V18T    | B72N4H18T      | —             | —               |
| 19             | B72N4V19T    | B72N4H19T      | —             | —               |
| 20             | B72N4V20T    | B72N4H20T      | —             | —               |
| 21             | B72N4V21T    | B72N4H21T      | —             | —               |
| 22             | B72N4V22T    | B72N4H22T      | —             | —               |
| 23             | B72N4V23T    | B72N4H23T      | —             | —               |
| 24             | B72N4V24T    | B72N4H24T      | —             | —               |

NOTE: Add "B" suffix for black color. Minimum order 5000 pieces.

## 5MM SHROUDED CLOSED-END HEADERS (FOR SERIES B52C4 CONNECTORS) SERIES B73N4



### PHYSICAL PROPERTIES

#### Housing:

HOUSING MATERIAL: Polybutylene terephthalate (PBTP), GV20

FLAMMABILITY: UL94V-0

COLOR: Blue or Black

#### Terminal:

SOLDER PIN: Brass, tin plated

#### Mechanical:

PITCH (PIN SPACING): 5mm and 10mm  
RECOMMENDED PCB HOLE DIA.: 1,7mm

### ELECTRICAL PROPERTIES

MAXIMUM CURRENT: 12A

OPERATING VOLTAGE: 250V

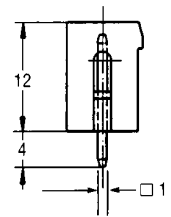
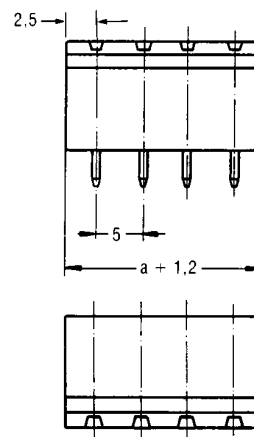
### ENVIRONMENTAL PROPERTIES

OPERATING TEMPERATURE RANGE:

-30°C to +120°C Gold and Silver contact system  
-30°C to +105°C Tin contact system

5mm and 10mm Pitch

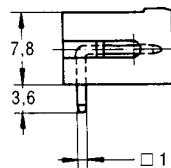
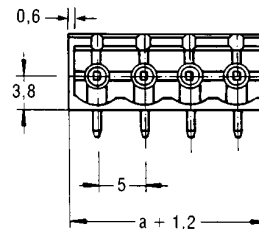
#### B73N4V (vertical solder pins)



Formulas For Dimension "a"  
(N = Number of terminals)

5mm Headers:  
 $a = N \times 5$   
10mm Headers:  
 $a = (N \times 10) - 5$

#### B73N4H (horizontal solder pins)



### Ordering Information

| # OF TERMINALS | 5MM VERTICAL | 5MM HORIZONTAL | 10MM VERTICAL | 10MM HORIZONTAL |
|----------------|--------------|----------------|---------------|-----------------|
| 2              | B73N4V02T    | B73N4H02T      | B73N5V02T     | B73N5H02T       |
| 3              | B73N4V03T    | B73N4H03T      | B73N5V03T     | B73N5H03T       |
| 4              | B73N4V04T    | B73N4H04T      | B73N5V04T     | B73N5H04T       |
| 5              | B73N4V05T    | B73N4H05T      | B73N5V05T     | B73N5H05T       |
| 6              | B73N4V06T    | B73N4H06T      | B73N5V06T     | B73N5H06T       |
| 7              | B73N4V07T    | B73N4H07T      | B73N5V07T     | B73N5H07T       |
| 8              | B73N4V08T    | B73N4H08T      | B73N5V08T     | B73N5H08T       |
| 9              | B73N4V09T    | B73N4H09T      | B73N5V09T     | B73N5H09T       |
| 10             | B73N4V10T    | B73N4H10T      | B73N5V10T     | B73N5H10T       |
| 11             | B73N4V11T    | B73N4H11T      | B73N5V11T     | B73N5H11T       |
| 12             | B73N4V12T    | B73N4H12T      | B73N5V12T     | B73N5H12T       |
| 13             | B73N4V13T    | B73N4H13T      | —             | —               |
| 14             | B73N4V14T    | B73N4H14T      | —             | —               |
| 15             | B73N4V15T    | B73N4H15T      | —             | —               |
| 16             | B73N4V16T    | B73N4H16T      | —             | —               |
| 17             | B73N4V17T    | B73N4H17T      | —             | —               |
| 18             | B73N4V18T    | B73N4H18T      | —             | —               |
| 19             | B73N4V19T    | B73N4H19T      | —             | —               |
| 20             | B73N4V20T    | B73N4H20T      | —             | —               |
| 21             | B73N4V21T    | B73N4H21T      | —             | —               |
| 22             | B73N4V22T    | B73N4H22T      | —             | —               |
| 23             | B73N4V23T    | B73N4H23T      | —             | —               |
| 24             | B73N4V24T    | B73N4H24T      | —             | —               |

NOTE: Add "B" suffix for black color. Minimum order 5000 pieces.

## 5MM SHROUDED CLOSED-END HEADERS (FOR SERIES B52C4 CONNECTORS) SERIES B74N4

### DESCRIPTION

These headers provide a mounting bracket on each end to snap on a Fastening Block (B74FB) or Latch (B74L). The Fastening Block provides a method to screw the header to the PC Board to provide greater stability. The Latch hooks into the Plug-in Connector (Series B52C4) to provide additional support.

### PHYSICAL PROPERTIES

#### Housing:

HOUSING MATERIAL: Polybutylene terephthalate (PBTP), GV20

FLAMMABILITY: UL94V-0

COLOR: Blue or Black

#### Terminal:

SOLDER PIN: Brass, tin plated

#### Mechanical:

PITCH (PIN SPACING): 5mm

RECOMMENDED PCB HOLE DIA.: 1,7mm

### ELECTRICAL PROPERTIES

MAXIMUM CURRENT: 12A

OPERATING VOLTAGE: 250V

### ENVIRONMENTAL PROPERTIES

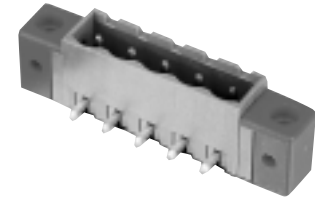
OPERATING TEMPERATURE RANGE:

-30°C to +120°C Gold and Silver contact system

-30°C to +105°C Tin contact system

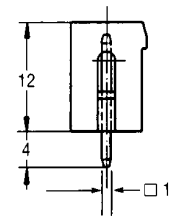
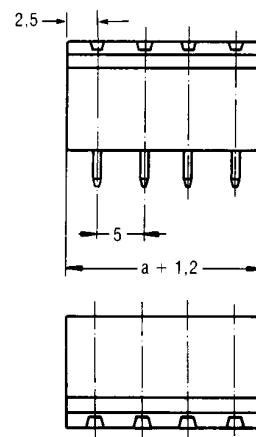
### Ordering Information

| # OF TERMINALS | 5MM VERTICAL | 5MM HORIZONTAL |
|----------------|--------------|----------------|
| 2              | B74N4V02T    | B74N4H02T      |
| 3              | B74N4V03T    | B74N4H03T      |
| 4              | B74N4V04T    | B74N4H04T      |
| 5              | B74N4V05T    | B74N4H05T      |
| 6              | B74N4V06T    | B74N4H06T      |
| 7              | B74N4V07T    | B74N4H07T      |
| 8              | B74N4V08T    | B74N4H08T      |
| 9              | B74N4V09T    | B74N4H09T      |
| 10             | B74N4V10T    | B74N4H10T      |
| 11             | B74N4V11T    | B74N4H11T      |
| 12             | B74N4V12T    | B74N4H12T      |
| 13             | B74N4V13T    | B74N4H13T      |
| 14             | B74N4V14T    | B74N4H14T      |
| 15             | B74N4V15T    | B74N4H15T      |
| 16             | B74N4V16T    | B74N4H16T      |
| 17             | B74N4V17T    | B74N4H17T      |
| 18             | B74N4V18T    | B74N4H18T      |
| 19             | B74N4V19T    | B74N4H19T      |
| 20             | B74N4V20T    | B74N4H20T      |
| 21             | B74N4V21T    | B74N4H21T      |
| 22             | B74N4V22T    | B74N4H22T      |
| 23             | B74N4V23T    | B74N4H23T      |
| 24             | B74N4V24T    | B74N4H24T      |



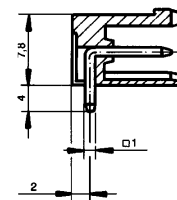
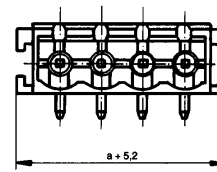
5mm Pitch

### B73N4V (vertical solder pins)



Formulas For Dimension "a"  
(N = Number of terminals)  
5mm Headers:  
 $a = N \times 5$   
10mm Headers:  
 $a = (N \times 10) - 5$

### B74N4H (horizontal solder pins)



## FASTENING BLOCK, LATCH (FOR SERIES B74 HEADERS) SERIES B74FB, B74L

### DESCRIPTION

**FASTENING BLOCK (B74FB):** Closed-end headers with mounting brackets (series B74) can have this accessory snapped into each end. The header can then be fastened to the PC board via a screw to provide greater stability.

**LATCHES (B74L):** Closed-end headers with mounting brackets (series B74) can have this accessory snapped into each end. The latch hooks into the plug-in connector to provide additional support.

### PHYSICAL PROPERTIES

**HOUSING:**

**HOUSING MATERIAL:** PBT

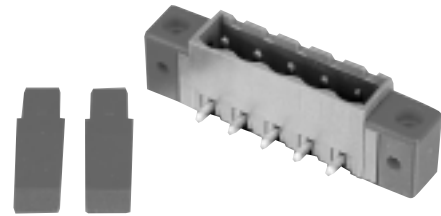
**FLAMMABILITY:** UL94V-0

**COLOR:** Brown

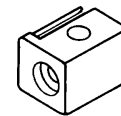
**MECHANICAL:**

**PITCH (TERMINAL SPACING):** For 5mm headers

**SCREW SIZE:** M2



**B74FB and B74L**



### Ordering Information

| CATALOG NUMBER | DESCRIPTION                            |
|----------------|--|
| B74FB          | Fastening Block for Series B74 headers |
| B74L           | Latch for Series B74 headers           |

