



**SPLICE**

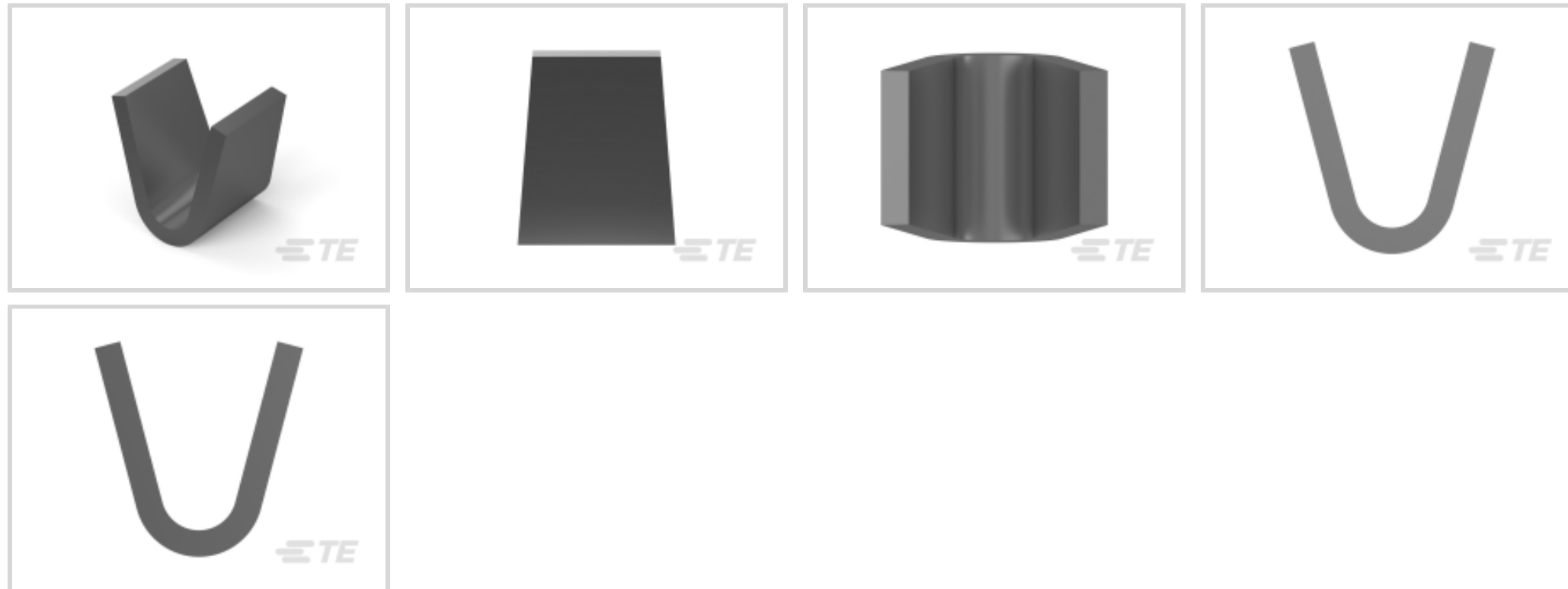
TE Internal #: 61008-1

Pigtail Splice / Thru Splice, 18 – 16 AWG, .823 – 1 mm<sup>2</sup> Wire, 1400 – 2800 CMA, Uninsulated, Steel, 0 Serration, 2.64 mm [.104 in]

Length, Reel, SPLICE

[View on TE.com >](#)

Terminals & Splices > Splices



Splice Type: **Pigtail Splice, Thru Splice**

Wire Size: **1400 – 2800 CMA**

Sealable: **No**

**Features**

**Product Type Features**

|                                        |                             |
|----------------------------------------|-----------------------------|
| Splice Type                            | Pigtail Splice, Thru Splice |
| Sealable                               | No                          |
| Compatible With Discrete Wire Type     | Solid, Stranded             |
| Wire Insulation Support Retention Type | Non-Insulation Support      |

**Configuration Features**

|                                   |               |
|-----------------------------------|---------------|
| Number of Serrations              | 0             |
| Compatible With Wire & Cable Type | Discrete Wire |

**Body Features**

|                |                 |
|----------------|-----------------|
| Product Weight | .058 g[.002 oz] |
|----------------|-----------------|

**Contact Features**

|                       |       |
|-----------------------|-------|
| Contact Base Material | Steel |
| Barrel Type           | Open  |

**Mechanical Attachment**

|                         |         |
|-------------------------|---------|
| Wire Insulation Support | Without |
|-------------------------|---------|

**Dimensions**



|                             |                  |
|-----------------------------|------------------|
| Wire Size                   | 1400 – 2800 CMA  |
| Terminal Material Thickness | .41 mm[.016 in]  |
| Product Length              | 2.64 mm[.104 in] |

### Usage Conditions

|                             |                            |
|-----------------------------|----------------------------|
| Insulation Option           | Uninsulated                |
| Operating Temperature Range | -40 – 250 °C[-40 – 482 °F] |

### Operation/Application

|                                    |        |
|------------------------------------|--------|
| Compatible With Wire Base Material | Copper |
|------------------------------------|--------|

### Industry Standards

|                             |    |
|-----------------------------|----|
| Government Qualified Splice | No |
|-----------------------------|----|

### Packaging Features

|                    |       |
|--------------------|-------|
| Packaging Quantity | 50000 |
| Packaging Method   | Reel  |

### Product Compliance

[For compliance documentation, visit the product page on TE.com>](#)

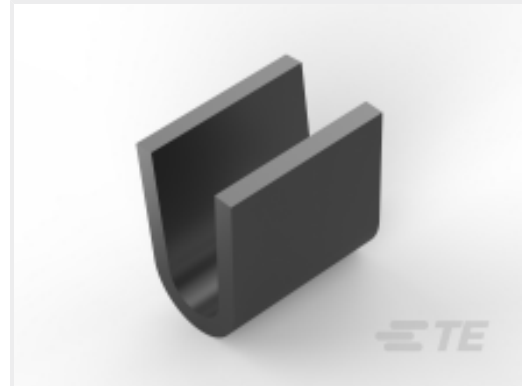
|                                               |                                                                                                                               |
|-----------------------------------------------|-------------------------------------------------------------------------------------------------------------------------------|
| EU RoHS Directive 2011/65/EU                  | Compliant                                                                                                                     |
| EU ELV Directive 2000/53/EC                   | Compliant                                                                                                                     |
| China RoHS 2 Directive MIIT Order No 32, 2016 | No Restricted Materials Above Threshold                                                                                       |
| EU REACH Regulation (EC) No. 1907/2006        | Current ECHA Candidate List: JAN 2025 (247)<br>Candidate List Declared Against: JAN 2025 (247)<br>Does not contain REACH SVHC |
| Halogen Content                               | Low Halogen - Br, Cl, F, I < 900 ppm per homogenous material. Also BFR/CFR/PVC Free                                           |
| Solder Process Capability                     | Not applicable for solder process capability                                                                                  |

#### Product Compliance Disclaimer

This information is provided based on reasonable inquiry of our suppliers and represents our current actual knowledge based on the information they provided. This information is subject to change. The part numbers that TE has identified as EU RoHS compliant have a maximum concentration of 0.1% by weight in homogenous materials for lead, hexavalent chromium, mercury, PBB, PBDE, DBP, BBP, DEHP, DIBP, and 0.01% for cadmium, or qualify for an exemption to these limits as defined in the Annexes of Directive 2011/65/EU (RoHS2). Finished electrical and electronic equipment products will be CE marked as required by Directive 2011/65/EU. Components may not be CE marked. Additionally, the part numbers that TE has identified as EU ELV compliant have a maximum concentration of 0.1% by weight in homogenous materials for lead, hexavalent chromium, and mercury, and 0.01% for cadmium, or qualify for an exemption to these limits as defined in the Annexes of Directive 2000/53/EC (ELV). Regarding the REACH Regulation, the information TE provides on SVHC in articles for this part number is based on the latest European Chemicals Agency (ECHA) 'Guidance on

requirements for substances in articles' posted at this URL: <https://echa.europa.eu/guidance-documents/guidance-on-reach>

## Compatible Parts



TE Part # 63414-1  
SPLICE 9000-16000 .031 TPST



TE Part # 61300-1  
SPLICE IS 10000-16000 .031 TPST



TE Part # 41313  
SPLICE 800-2500 CMA TPBR



TE Part # 42329-1  
SPLICE 1200-2600 .012 NPST



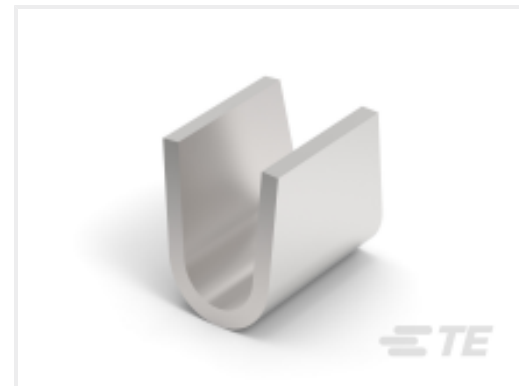
TE Part # 60933-2  
SPLICE 2200-2900 .012 TPST



TE Part # 40862  
SPLICE 1400-3600 .016 TPBR



TE Part # 41215  
SPLICE 2200-4500 CMA NPSTL



TE Part # 41627-1  
SPLICE 4000-10000 .025 ST



TE Part # 60932-2  
SPLICE 2500-4700 .020 TPST



TE Part # 485020-1  
SPLICE 6000-8000 .020 TPST



TE Part # 41459  
SPLICE 800-2600 CMA BR



TE Part # 61021-1  
SPLICE 18-16 AWG .0126 NPST

## Also in the Series | SPLICE

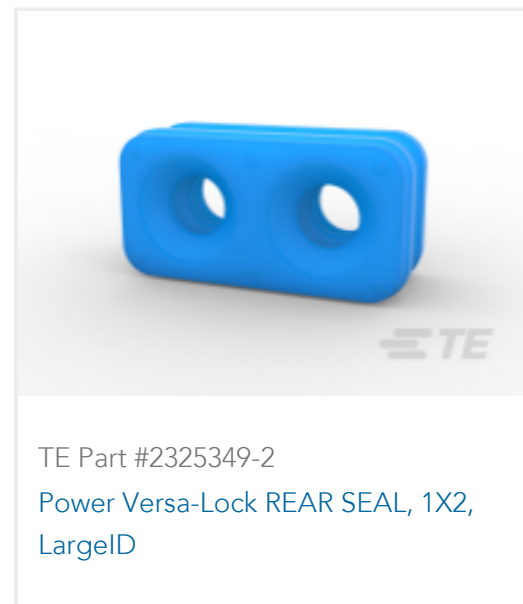


Crimp Wire Pins, Tabs & Ferrules(1)



Splices(63)

## Customers Also Bought



## Documents

### Product Drawings

[SPLICE 18-16 AWG .0158 TPST](#)

English

### CAD Files

[3D PDF](#)

3D

Customer View Model

[ENG\\_CVM\\_CVM\\_61008-1\\_J\\_c-61008-1-j.2d\\_dxf.zip](#)

English

Customer View Model

[ENG\\_CVM\\_CVM\\_61008-1\\_J\\_c-61008-1-j.3d\\_igs.zip](#)

English

Customer View Model

[ENG\\_CVM\\_CVM\\_61008-1\\_J\\_c-61008-1-j.3d\\_stp.zip](#)

English

By downloading the CAD file I accept and agree to the [Terms and Conditions](#) of use.

### Product Specifications

61008-1

Pigtail Splice / Thru Splice, 18 – 16 AWG, .823 – 1 mm<sup>2</sup> Wire, 1400 – 2800 CMA,  
Uninsulated, Steel, 0 Serration, 2.64 mm [.104 in] Length, Reel, SPLICE



## Application Specification

English