

5148083-1 ✓ ACTIVE

## EUROCARD

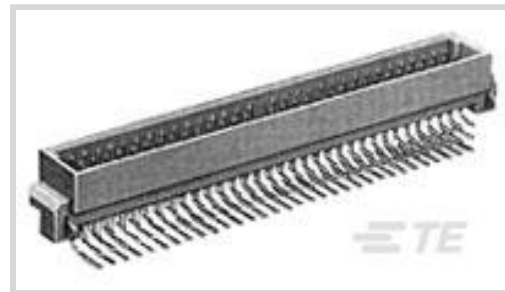
TE Internal #: 5148083-1

Plug, Board-to-Board, 48 Position, 2.54 mm [.1 in] Centerline,  
Printed Circuit Board, 3 Row, Right Angle, 16 Column, Eurocard  
Connectors

[View on TE.com >](#)



Connectors > PCB Connectors > Backplane Connectors > Eurocard Connectors



Connector & Housing Type: **Plug**

Connector System: **Board-to-Board**

Termination Post & Tail Length: **2.64 mm [.104 in]**

Number of Positions: **48**

Centerline (Pitch): **2.54 mm [.1 in]**

### Features

#### Product Type Features

|   |                       |
|---|-----------------------|
| Make First / Break Last Contacts Loaded | Rows A, B, C - 1-16   |
| Connector & Housing Type                | Plug                  |
| Connector System                        | Board-to-Board        |
| Connector & Contact Terminates To       | Printed Circuit Board |
| DIN Size                                | Half                  |
| DIN Level                               | II                    |

#### Configuration Features

|                                 |                         |
|---------------------------------|-------------------------|
| Mating & Unmating Configuration | Make First / Break Last |
| Number of Positions             | 48                      |
| Number of Rows                  | 3                       |
| PCB Mount Orientation           | Right Angle             |
| Number of Columns               | 16                      |
| Rows Loaded                     | A, C                    |
| Number of Signal Positions      | 48                      |

#### Contact Features

|                              |              |
|------------------------------|--------------|
| Contact Base Material        | Copper Alloy |
| Contact Type                 | Pin          |
| Contact Current Rating (Max) | 1.5 A        |



### Termination Features

|                                |                       |
|--------------------------------|-----------------------|
| Termination Method to PCB      | Through Hole - Solder |
| Termination Post & Tail Length | 2.64 mm[.104 in]      |

### Mechanical Attachment

|                          |              |
|--------------------------|--------------|
| Connector Mounting Type  | Board Mount  |
| Mating Retention         | Without      |
| PCB Mount Retention Type | Boardlock    |
| Mating Alignment Type    | Polarization |
| Mating Alignment         | With         |
| PCB Mount Retention      | With         |

### Housing Features

|                    |                |
|--------------------|----------------|
| Housing Material   | Polymer - GF   |
| Centerline (Pitch) | 2.54 mm[.1 in] |

### Dimensions

|                             |                  |
|-----------------------------|------------------|
| PCB Thickness (Recommended) | 1.57 mm[.062 in] |
| Connector Height            | 12.62 mm         |
| Row-to-Row Spacing          | 2.54 mm[.1 in]   |

### Usage Conditions

|                             |                            |
|-----------------------------|----------------------------|
| Operating Temperature Range | -55 – 105 °C[-67 – 221 °F] |
|-----------------------------|----------------------------|

### Operation/Application

|                     |        |
|---------------------|--------|
| Circuit Application | Signal |
|---------------------|--------|

### Packaging Features

|                  |     |
|------------------|-----|
| Packaging Method | Box |
|------------------|-----|

### Product Compliance

[For compliance documentation, visit the product page on TE.com>](#)

|   |   |
|---|---|
| EU RoHS Directive 2011/65/EU                  | Compliant   |
| EU ELV Directive 2000/53/EC                   | Compliant   |
| China RoHS 2 Directive MIIT Order No 32, 2016 | No Restricted Materials Above Threshold   |
| EU REACH Regulation (EC) No. 1907/2006        | Current ECHA Candidate List: JAN 2025 (247)<br>Candidate List Declared Against: JUNE 2024 (241) |



Does not contain REACH SVHC

Halogen Content

Low Halogen - Br, Cl, F, I < 900 ppm per homogenous material. Also BFR/CFR/PVC Free

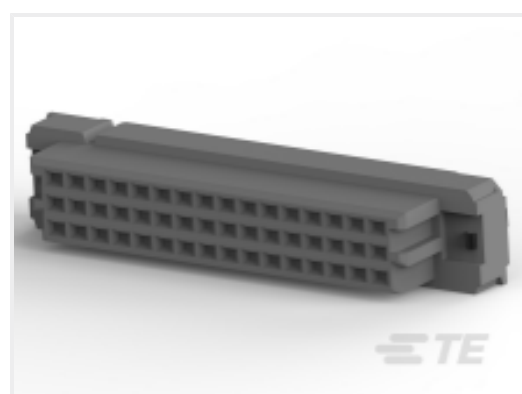
Solder Process Capability

Wave solder capable to 265°C

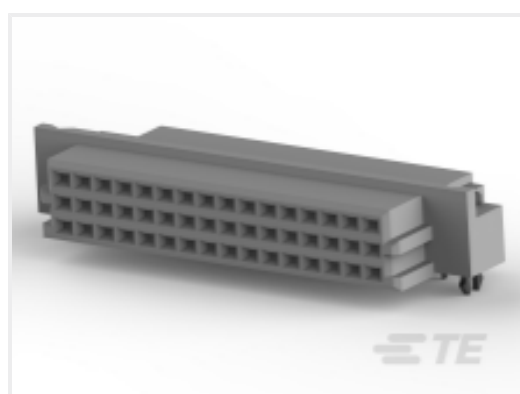
Product Compliance Disclaimer

This information is provided based on reasonable inquiry of our suppliers and represents our current actual knowledge based on the information they provided. This information is subject to change. The part numbers that TE has identified as EU RoHS compliant have a maximum concentration of 0.1% by weight in homogenous materials for lead, hexavalent chromium, mercury, PBB, PBDE, DBP, BBP, DEHP, DIBP, and 0.01% for cadmium, or qualify for an exemption to these limits as defined in the Annexes of Directive 2011/65/EU (RoHS2). Finished electrical and electronic equipment products will be CE marked as required by Directive 2011/65/EU. Components may not be CE marked. Additionally, the part numbers that TE has identified as EU ELV compliant have a maximum concentration of 0.1% by weight in homogenous materials for lead, hexavalent chromium, and mercury, and 0.01% for cadmium, or qualify for an exemption to these limits as defined in the Annexes of Directive 2000/53/EC (ELV). Regarding the REACH Regulation, the information TE provides on SVHC in articles for this part number is based on the latest European Chemicals Agency (ECHA) 'Guidance on requirements for substances in articles' posted at this URL: <https://echa.europa.eu/guidance-documents/guidance-on-reach>

## Compatible Parts



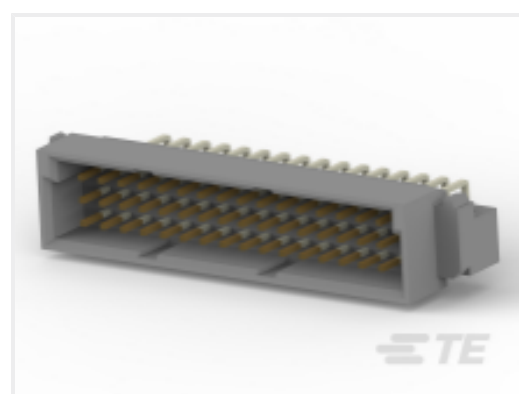
TE Part # 5536397-5  
ASSY,RECEPT,EURO,TYPE C/2,LEAD



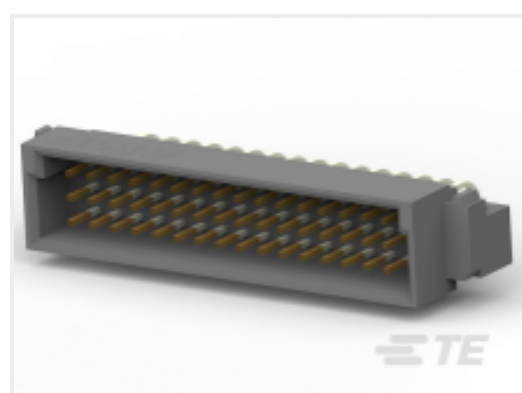
TE Part # 5650893-5  
ASSY,RECEPT,EUROCARD,TYPE R/2,L-FREE,48,



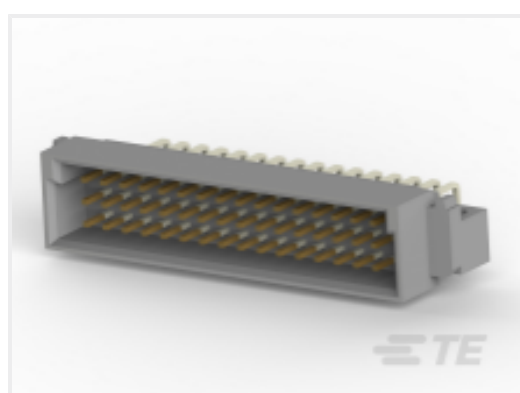
TE Part # 5650916-5  
ASSY,PIN,EUROCARD,TYPE C/2,LEA



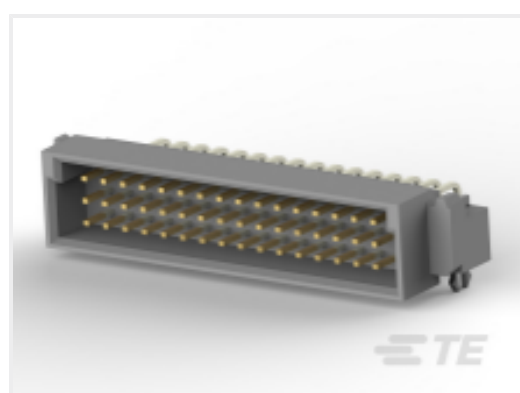
TE Part # 5650478-5  
ASSY,PIN,EUROCARD,TYPE C/2,LEA



TE Part # 5650948-5  
ASSY,PIN,EUROCARD,TYPE C/2,LEA



TE Part # 650478-5  
048 EURO TYPE C PIN ST ASSY



TE Part # 5148020-5  
ASSY,PIN,EURO,"C/2",L-FREE,48



TE Part # 5535070-5  
ASSY,RECEPTACLE,EUROCARD,TYPE

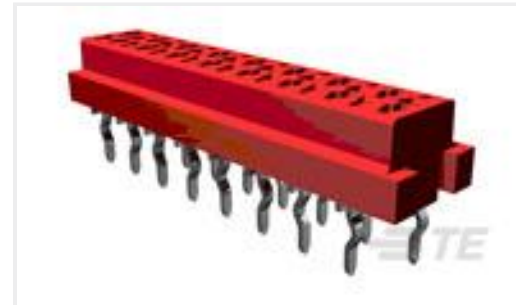
## Customers Also Bought



TE Part #5502830001  
RPS-1K-16-10/2.0-9



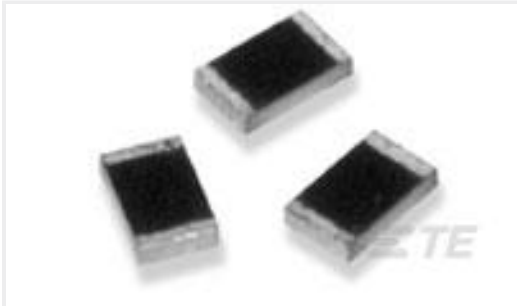
TE Part #211771-1  
23-19 CPC RECEPT, STND SEX



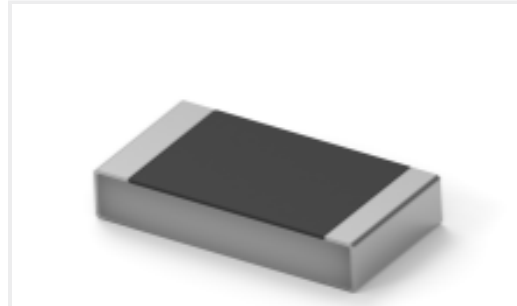
TE Part #8-215079-4  
MICRO-MATCH FOB.14P



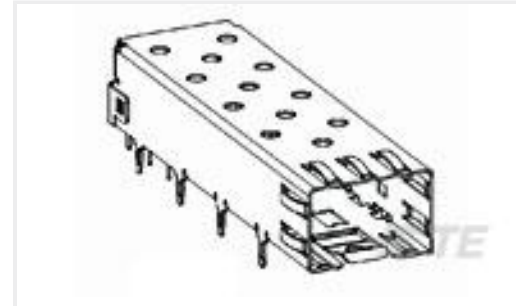
TE Part #1571610-2  
Sealed R/A Tact switch, Sealed



TE Part #8-1879276-0  
RP 2A 10K5 0.1% 15PPM 1K RL



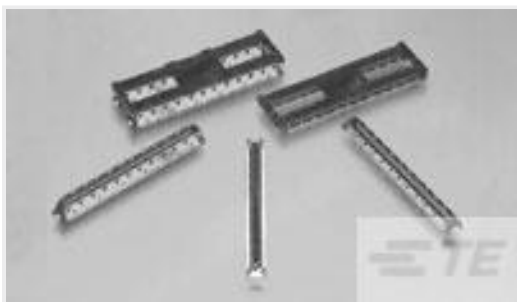
TE Part #3-2176458-0  
CPF 1206 2R0 0.1% 25ppm 1K RL



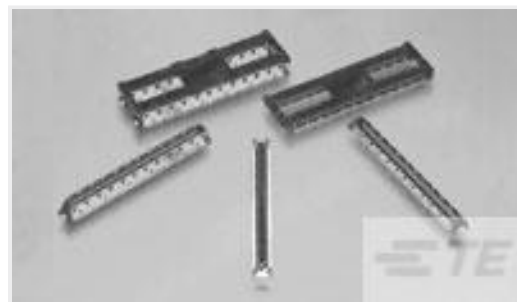
TE Part #2227302-1  
CAGE ASSY, PRESS FIT, SFP



TE Part #2-5747705-1  
37 PLUG SP/FMS SCRLK



TE Part #3-6318490-6  
.5FHR04H,220,S,GIG,08/Sn,HT,NSYes



TE Part #9-6318491-6  
.5FHP08H,220,S,GIG,08/Sn,HT,NSYes,  
W/C

## Documents

### Product Drawings

[048 EURO TYPE C PIN MFBL ASSY](#)

English

### CAD Files

Customer View Model

[ENG\\_CVM\\_CVM\\_5148083-1\\_A.2d\\_dxf.zip](#)

English

### 3D PDF

3D

Customer View Model

[ENG\\_CVM\\_CVM\\_5148083-1\\_A.3d\\_igs.zip](#)

English

Customer View Model

[ENG\\_CVM\\_CVM\\_5148083-1\\_A.3d\\_stp.zip](#)

English

By downloading the CAD file I accept and agree to the [Terms and Conditions](#) of use.

## Product Specifications



## Application Specification

English

---

## Agency Approvals

UL

English