

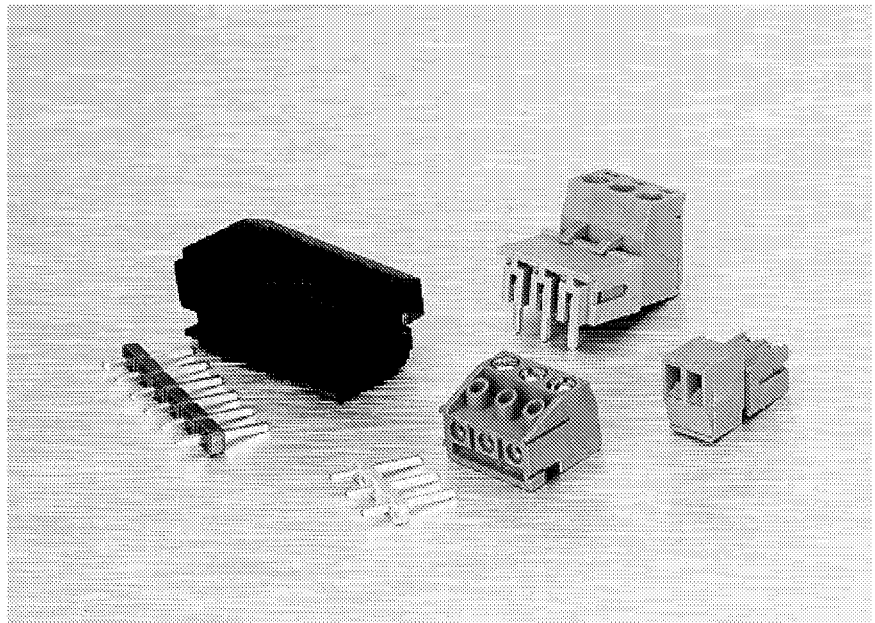
DESCRIPTION/ APPLICATION

Designed to European specifications, these two piece blocks provide interconnection between wire and PC board. Wire is terminated at the connector and the header is mounted to the PC board. The pluggable design expedites field servicing and troubleshooting.

DESIGN ADVANTAGES

- Pitches Available:
 - 3,5mm (0.138")
 - 5,0mm (0.197")
 - 5,08mm (0.200")
 - 7,0mm (0.276")
 - 10,0mm (0.394")
 - 10,16mm (0.400")
- Locking fingers provide secure "vibration-proof" connection.
- Mate with either closed-end or open-end shrouded headers.
- Available in two connection styles:
 - Cage clamp for superior connection.
 - Wire protection for economical designs.
- Vertical, horizontal, or universal mounting.
- Optional press-on coding key and polarizing clip system for B52 series. Polarized feature of connector and header allows for varied applications.
- UL94V-0 rated thermoplastic insulator housing.
- Gold and silver plated terminals available in addition to standard tin plating.
- Terminal marking available.
- Shrouded headers provide increased circuit isolation with 4 sided barrier protection.

TWO PIECE / PLUGGABLE CONNECTORS



CONNECTOR INDEX

3,5mm Connector with Cage Clamp	32
3,5mm Header	33
5mm Flush Connector with Cage Clamp	34
5mm Flush Header	35
5mm Locking Connector with Cage Clamp	36
5mm Open End Header	37
5mm Closed End Header	38, 39
5mm Fastening Block, Latch	40
5mm Flush Connector and Header Combo	41
5mm Flush Connector with Wire Protector	42
5mm Flush Header	43
5,08mm Flush Connector with Cage Clamp	44
5,08mm Flush Header	45
5,08mm Locking Connector with Cage Clamp	46
5,08mm Header	47
3,5mm Polarizing Accessories	48

5MM PLUG-IN LOCKING CONNECTORS WITH CAGE CLAMP SERIES B52C4

PHYSICAL PROPERTIES:

Housing:

HOUSING MATERIAL: Polybutylene terephthalate (PBTP), GV 20
FLAMMABILITY: UL94V-0
COLOR: Blue or Black

Terminal:

CAGE CLAMP AND SOLDER PIN: Brass, tin plated
SCREW: M3 x 5,3mm, steel, zinc plated, yellow chromate treated

Mechanical:

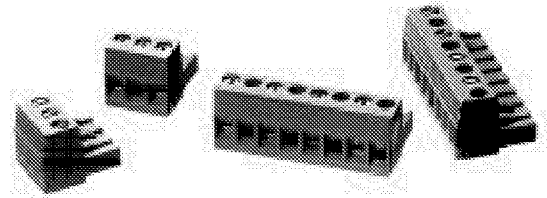
PITCH (PIN SPACING): 5mm and 10mm
WIRE STRIP LENGTH: 7mm
RECOMMENDED TIGHTENING TORQUE: 0.8Nm (7.0 in-lbs)

ELECTRICAL PROPERTIES:

MAXIMUM CURRENT: 12A
OPERATING VOLTAGE: 300V
WIRE RANGE: 12-22 AWG
DIELECTRIC WITHSTAND: 16 KV/mm

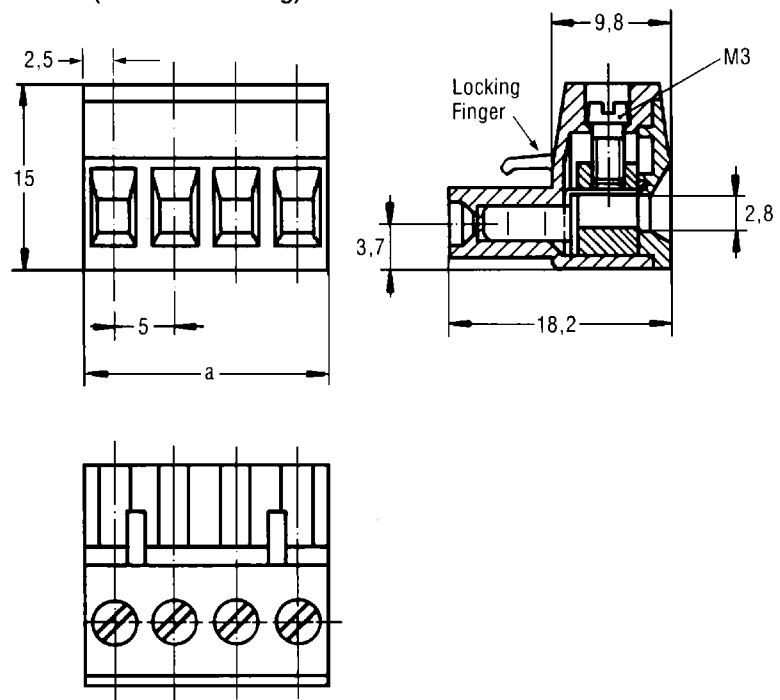
ENVIRONMENTAL PROPERTIES:

OPERATING TEMPERATURE RANGE:
-30°C to +120°C Gold and Silver contact system
-30°C to +105°C Tin contact system



5mm and 10mm Pitch

B52C4U (universal mounting)



Ordering Information

# OF TERMINALS	5MM UNIVERSAL	10MM UNIVERSAL
2	B52C4U02T	B52C5U02T
3	B52C4U03T	B52C5U03T
4	B52C4U04T	B52C5U04T
5	B52C4U05T	B52C5U05T
6	B52C4U06T	B52C5U06T
7	B52C4U07T	B52C5U07T
8	B52C4U08T	B52C5U08T
9	B52C4U09T	
10	B52C4U10T	
11	B52C4U11T	
12	B52C4U12T	

NOTE: Add "B" suffix for black color. Minimum order 5000 pieces.

5MM SHROUDED OPEN-END HEADERS (FOR SERIES B52C4 CONNECTORS) SERIES B72N4

PHYSICAL PROPERTIES:

Housing:

HOUSING MATERIAL: Polybutylene terephthalate (PBTP), GV20

FLAMMABILITY: UL94V-0

COLOR: Blue or Black

Terminal:

SOLDER PIN: Brass, tin plated

Mechanical:

PITCH (PIN SPACING): 5mm and 10mm

RECOMMENDED PCB HOLE DIA.: 1,7mm

ELECTRICAL PROPERTIES:

MAXIMUM CURRENT: 12A

OPERATING VOLTAGE: 250V

ENVIRONMENTAL PROPERTIES:

OPERATING TEMPERATURE RANGE:

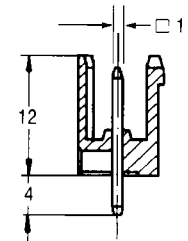
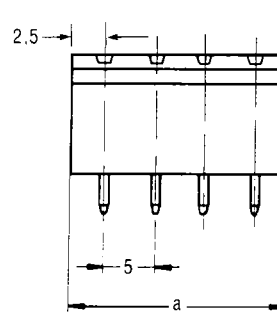
-30°C to +120°C Gold and Silver contact system

-30°C to +105°C Tin contact system



5mm and 10mm Pitch

B72N4V (vertical solder pins)



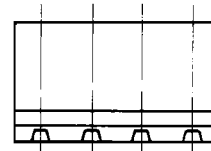
Formulas For Dimension "a"
(N = Number of terminals)

5mm Headers:

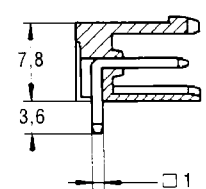
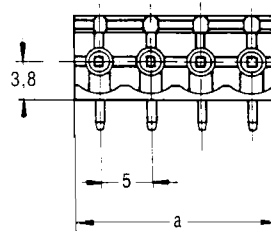
$$a = N \times 5$$

10mm Headers:

$$a = (N \times 10) - 5$$



B72N4H (horizontal solder pins)



Ordering Information

# OF TERMINALS	5MM VERTICAL	5MM HORIZONTAL	10MM VERTICAL	10MM HORIZONTAL
2	B72N4V02T	B72N4H02T	B72N5V02T	B72N5H02T
3	B72N4V03T	B72N4H03T	B72N5V03T	B72N5H03T
4	B72N4V04T	B72N4H04T	B72N5V04T	B72N5H04T
5	B72N4V05T	B72N4H05T	B72N5V05T	B72N5H05T
6	B72N4V06T	B72N4H06T	B72N5V06T	B72N5H06T
7	B72N4V07T	B72N4H07T	B72N5V07T	B72N5H07T
8	B72N4V08T	B72N4H08T	B72N5V08T	B72N5H08T
9	B72N4V09T	B72N4H09T	B72N5V09T	B72N5H09T
10	B72N4V10T	B72N4H10T	B72N5V10T	B72N5H10T
11	B72N4V11T	B72N4H11T	B72N5V11T	B72N5H11T
12	B72N4V12T	B72N4H12T	B72N5V12T	B72N5H12T
13	B72N4V13T	B72N4H13T	—	—
14	B72N4V14T	B72N4H14T	—	—
15	B72N4V15T	B72N4H15T	—	—
16	B72N4V16T	B72N4H16T	—	—
17	B72N4V17T	B72N4H17T	—	—
18	B72N4V18T	B72N4H18T	—	—
19	B72N4V19T	B72N4H19T	—	—
20	B72N4V20T	B72N4H20T	—	—
21	B72N4V21T	B72N4H21T	—	—
22	B72N4V22T	B72N4H22T	—	—
23	B72N4V23T	B72N4H23T	—	—
24	B72N4V24T	B72N4H24T	—	—

NOTE: Add "B" suffix for black color. Minimum order 5000 pieces.

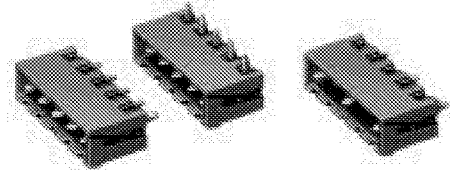
BUCHANAN

Thomas & Betts Electronics/OEM Division Tel: 901-252-7766 Fax: 901-252-1312



Dimensions shown are for reference only. Dimensions are in millimeters.

5MM SHROUDED CLOSED-END HEADERS (FOR SERIES B52C4 CONNECTORS) SERIES B73N4



PHYSICAL PROPERTIES:

Housing:

HOUSING MATERIAL: Polybutylene terephthalate (PBTP), GV20

FLAMMABILITY: UL94V-0

COLOR: Blue or Black

Terminal:

SOLDER PIN: Brass, tin plated

Mechanical:

PITCH (PIN SPACING): 5mm and 10mm
RECOMMENDED PCB HOLE DIA.: 1,7mm

ELECTRICAL PROPERTIES:

MAXIMUM CURRENT: 12A

OPERATING VOLTAGE: 250V

ENVIRONMENTAL PROPERTIES:

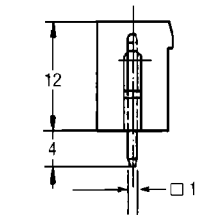
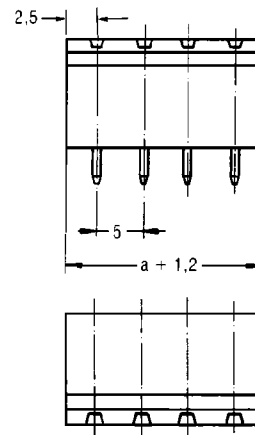
OPERATING TEMPERATURE RANGE:

-30°C to +120°C Gold and Silver contact system

-30°C to +105°C Tin contact system

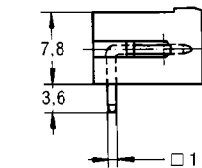
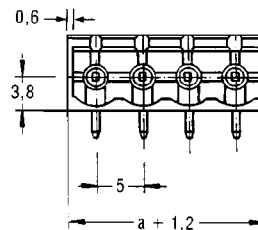
5mm and 10mm Pitch

B73N4V (vertical solder pins)



Formulas For Dimension "a"
(N = Number of terminals)
5mm Headers:
 $a = N \times 5$
10mm Headers:
 $a = (N \times 10) - 5$

B73N4H (horizontal solder pins)



Ordering Information

# OF TERMINALS	5MM VERTICAL	5MM HORIZONTAL	10MM VERTICAL	10MM HORIZONTAL
2	B73N4V02T	B73N4H02T	B73N5V02T	B73N5H02T
3	B73N4V03T	B73N4H03T	B73N5V03T	B73N5H03T
4	B73N4V04T	B73N4H04T	B73N5V04T	B73N5H04T
5	B73N4V05T	B73N4H05T	B73N5V05T	B73N5H05T
6	B73N4V06T	B73N4H06T	B73N5V06T	B73N5H06T
7	B73N4V07T	B73N4H07T	B73N5V07T	B73N5H07T
8	B73N4V08T	B73N4H08T	B73N5V08T	B73N5H08T
9	B73N4V09T	B73N4H09T	B73N5V09T	B73N5H09T
10	B73N4V10T	B73N4H10T	B73N5V10T	B73N5H10T
11	B73N4V11T	B73N4H11T	B73N5V11T	B73N5H11T
12	B73N4V12T	B73N4H12T	B73N5V12T	B73N5H12T
13	B73N4V13T	B73N4H13T	—	—
14	B73N4V14T	B73N4H14T	—	—
15	B73N4V15T	B73N4H15T	—	—
16	B73N4V16T	B73N4H16T	—	—
17	B73N4V17T	B73N4H17T	—	—
18	B73N4V18T	B73N4H18T	—	—
19	B73N4V19T	B73N4H19T	—	—
20	B73N4V20T	B73N4H20T	—	—
21	B73N4V21T	B73N4H21T	—	—
22	B73N4V22T	B73N4H22T	—	—
23	B73N4V23T	B73N4H23T	—	—
24	B73N4V24T	B73N4H24T	—	—

NOTE: Add "B" suffix for black color. Minimum order 5000 pieces.

5MM SHROUDED CLOSED-END HEADERS (FOR SERIES B52C4 CONNECTORS) SERIES B74N4

DESCRIPTION:

These headers provide a mounting bracket on each end to snap on a Fastening Block (B74FB) or Latch (B74L). The Fastening Block provides a method to screw the header to the PC Board to provide greater stability. The Latch hooks into the Plug-in Connector (Series B52C4) to provide additional support.

PHYSICAL PROPERTIES:

Housing:

HOUSING MATERIAL: Polybutylene terephthalate (PBTP), GV20

FLAMMABILITY: UL94V-0

COLOR: Blue or Black

Terminal:

SOLDER PIN: Brass, tin plated

Mechanical:

PITCH (PIN SPACING): 5mm

RECOMMENDED PCB HOLE DIA.: 1,7mm

ELECTRICAL PROPERTIES:

MAXIMUM CURRENT: 12A

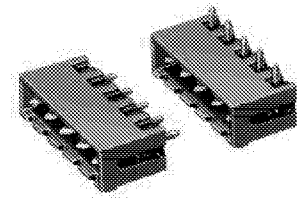
OPERATING VOLTAGE: 250V

ENVIRONMENTAL PROPERTIES:

OPERATING TEMPERATURE RANGE:

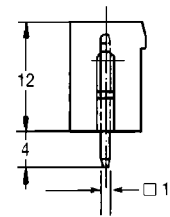
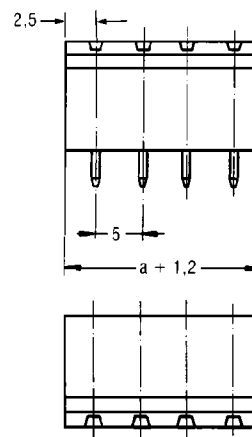
-30°C to +120°C Gold and Silver contact system

-30°C to +105°C Tin contact system



5mm Pitch

B73N4V (vertical solder pins)

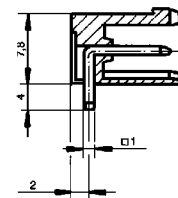
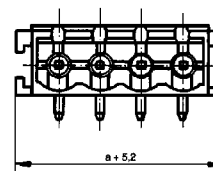


Formulas For
Dimension "a"
(N = Number of terminals)

5mm Headers:
 $a = N \times 5$

10mm Headers:
 $a = (N \times 10) - 5$

B74N4H (horizontal solder pins)



Ordering Information

# OF TERMINALS	5MM VERTICAL	5MM HORIZONTAL
2	B74N4V02T	B74N4H02T
3	B74N4V03T	B74N4H03T
4	B74N4V04T	B74N4H04T
5	B74N4V05T	B74N4H05T
6	B74N4V06T	B74N4H06T
7	B74N4V07T	B74N4H07T
8	B74N4V08T	B74N4H08T
9	B74N4V09T	B74N4H09T
10	B74N4V10T	B74N4H10T
11	B74N4V11T	B74N4H11T
12	B74N4V12T	B74N4H12T
13	B74N4V13T	B74N4H13T
14	B74N4V14T	B74N4H14T
15	B74N4V15T	B74N4H15T
16	B74N4V16T	B74N4H16T
17	B74N4V17T	B74N4H17T
18	B74N4V18T	B74N4H18T
19	B74N4V19T	B74N4H19T
20	B74N4V20T	B74N4H20T
21	B74N4V21T	B74N4H21T
22	B74N4V22T	B74N4H22T
23	B74N4V23T	B74N4H23T
24	B74N4V24T	B74N4H24T

NOTE: Add "B" suffix for black color. Minimum order 5000 pieces.

FASTENING BLOCK, LATCH (FOR SERIES B74 HEADERS) SERIES B74FB, B74L

DESCRIPTION

FASTENING BLOCK (B74FB): Closed-end headers with mounting brackets (series B74) can have this accessory snapped into each end. The header can then be fastened to the PC board via a screw to provide greater stability.

LATCHES (B74L): Closed-end headers with mounting brackets (series B74) can have this accessory snapped into each end. The latch hooks into the plug-in connector to provide additional support.

PHYSICAL PROPERTIES

HOUSING:

HOUSING MATERIAL: PBT

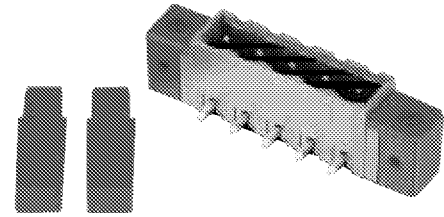
FLAMMABILITY: UL94V-0

COLOR: Brown

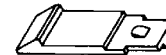
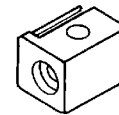
MECHANICAL:

PITCH (TERMINAL SPACING): For 5mm headers

SCREW SIZE: M2



B74FB and B74L



Ordering Information

CATALOG NUMBER	DESCRIPTION
B74FB	Fastening Block for Series B74 headers
B74L	Latch for Series B74 headers

