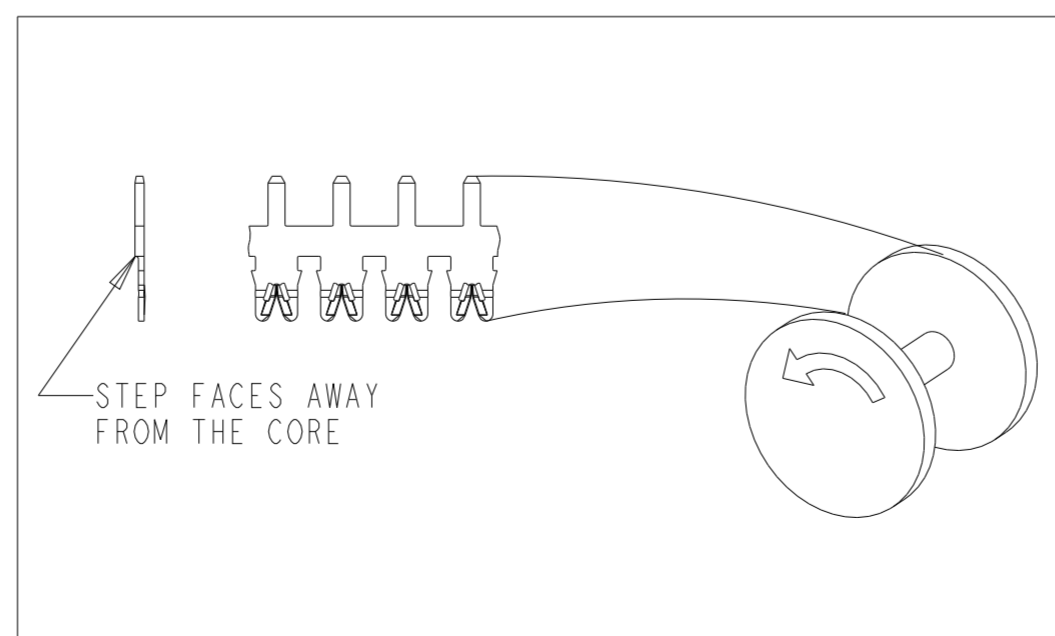
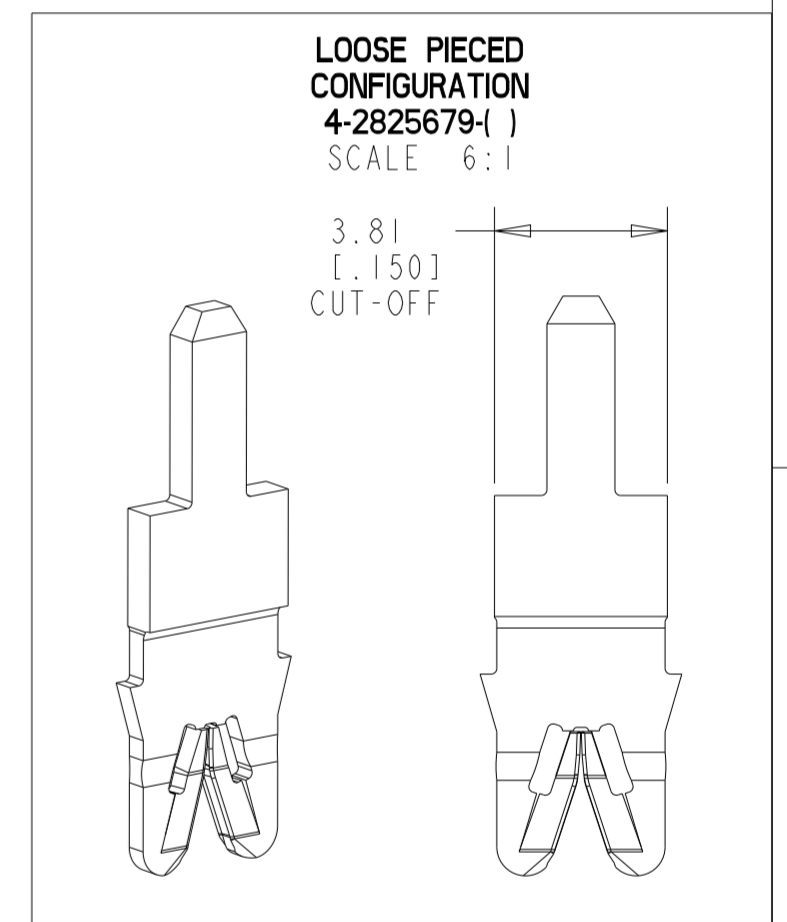
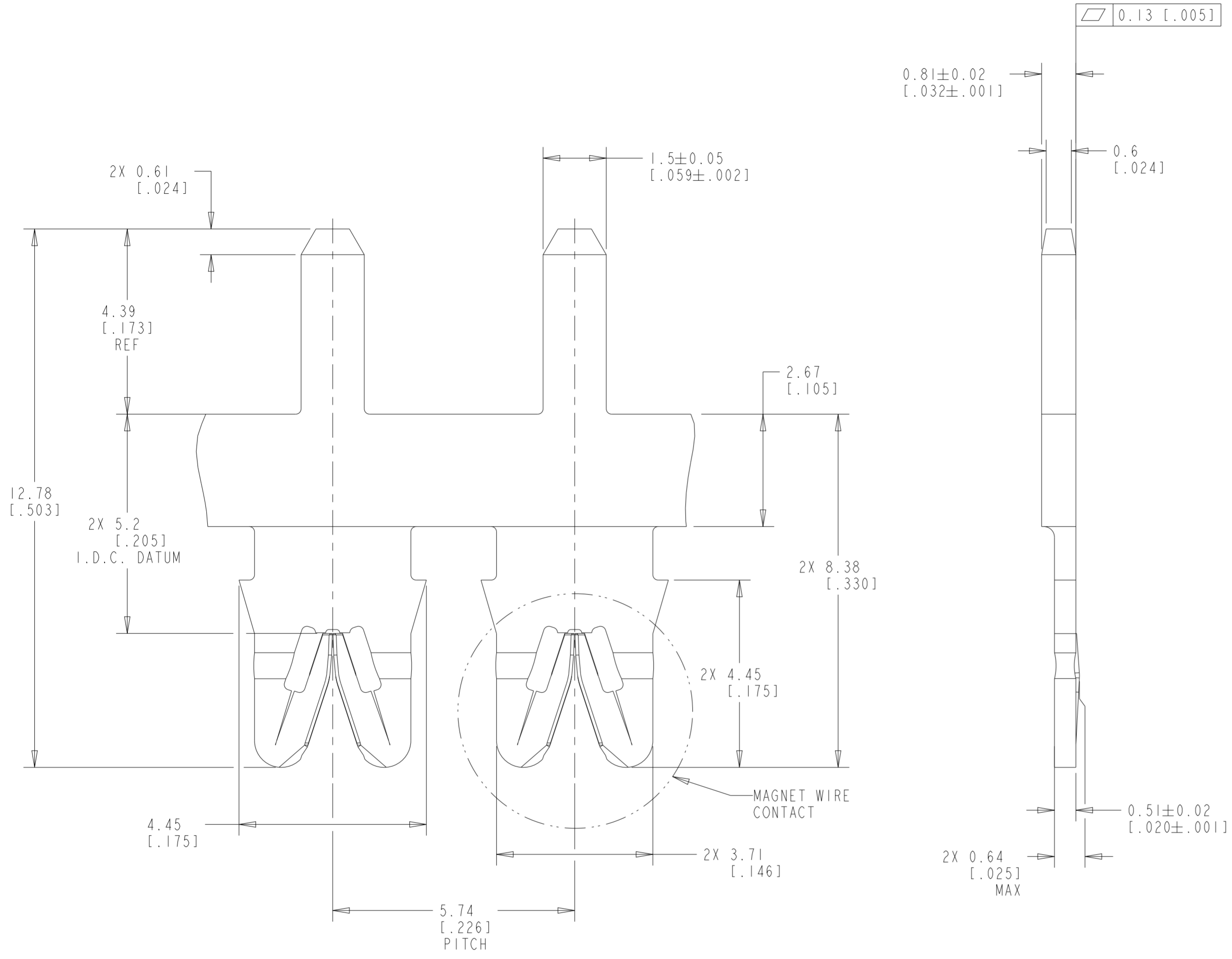


P	LTR	DESCRIPTION	DATE	DWN	APVD
A		REVISED PER ECN-21-103243	05MAY2021	BDA	KR
A1		REVISED PER ECR-21-115832	06OCT2021	BDA	KR
A2		REVISED PER ECR-21-119711	11NOV2021	BDA	KR

- SPECIFICATIONS:
MAGNET WIRE-#18-#34 AWG
1.02-.0.16 [.040-.006] DIAMETER COPPER
 - POCKET RECOMMENDATION: #1601431
 - TERMINAL APPLICATION TO COMPLY WITH TE CONNECTIVITY SPECIFICATION 114-13166, FIGURE 10.
- ⚠ PRELIMINARY PART - NOT RELEASED FOR PRODUCTION



TERMINALS TO UNWIND FROM REEL AS SHOWN

LOOSE PIECED	POST TIN OVER NICKEL UNDERPLATE	BRASS	⚠ 4-2825679-2
ON REEL	POST TIN OVER NICKEL UNDERPLATE	BRASS	2825679-2
ON REEL	UNPLATED	BRASS	2825679-1
CONFIGURATION	FINISH	MATERIAL	PART NUMBER

THIS DRAWING IS A CONTROLLED DOCUMENT.		DWN B. WEAVER 12FEB2021	TE Connectivity STANDARD RANGE WIRE TO .059x.032 TAB STAMEZE TERMINAL
DIMENSIONS: mm [IN]	TOLERANCES UNLESS OTHERWISE SPECIFIED:	CHK K. RANDOLPH 12FEB2021	
	0 PLC ±	APVD W. MOYER 12FEB2021	
	1 PLC ±	PRODUCT SPEC 108-2085	
MATERIAL SEE TABLE	FINISH SEE TABLE	APPLICATION SPEC	SIZE A2 CAGE CODE 00779 DRAWING NO C-2825679 RESTRICTED TO
CUSTOMER DRAWING		WEIGHT -	SCALE 12:1 SHEET 1 OF 1 REV A2