

2392852-1 ✓ ACTIVE

Z-PACK | Z-PACK 2mm HM

TE Internal #: 2392852-1

Hard Metric Backplane PCB Mount Receptacle, ≤ 1 Gb/s, 19

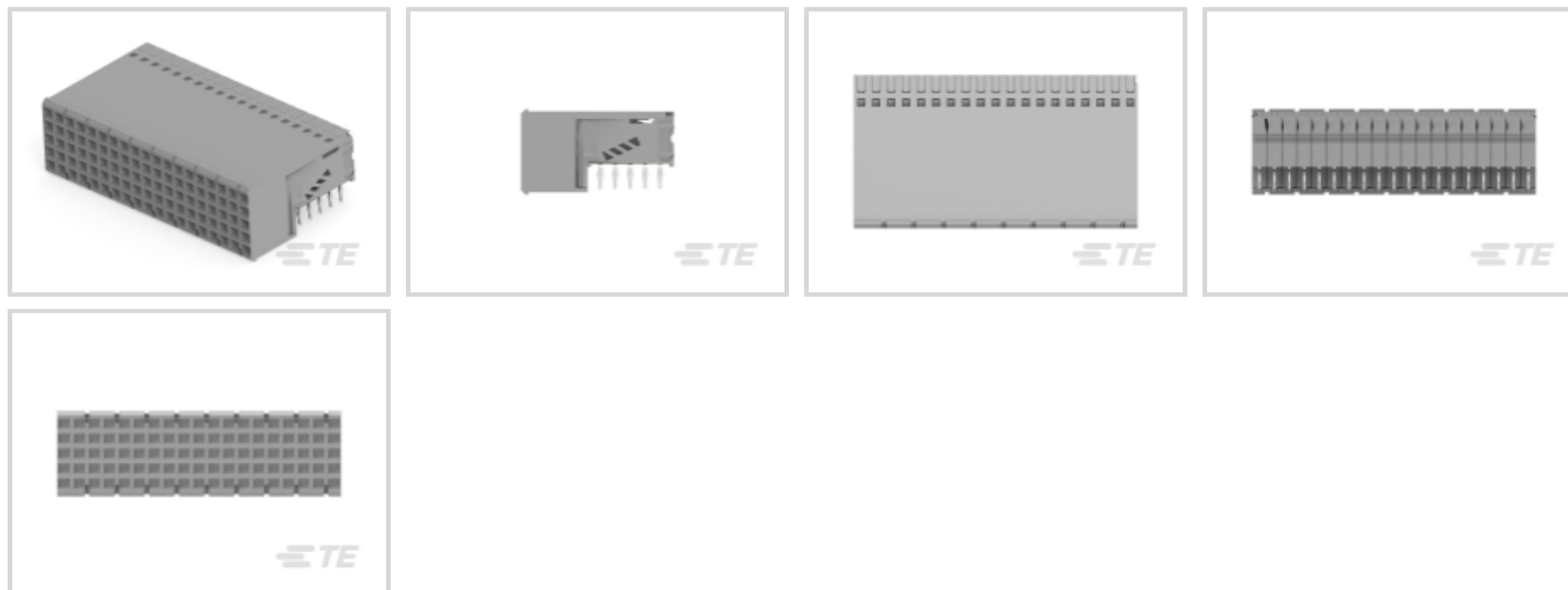
Column, 5 Row, Mezzanine, 95 Position, 2.54 mm [.1 in] Centerline,

Right Angle, Z-PACK 2mm HM

[View on TE.com >](#)



Connectors > PCB Connectors > Backplane Connectors > Hard Metric Backplane Connectors



PCB Connector Type: **PCB Mount Receptacle**

Data Rate: ≤ 1 Gb/s

Number of Columns: **19**

Number of Rows: **5**

Backplane Architecture: **Mezzanine**

Features

Product Type Features

Connector & Contact Terminates To	Printed Circuit Board
Backplane Interface Type	2mm HM
Connector System	Board-to-Board
PCB Connector Type	PCB Mount Receptacle
Sealable	No

Configuration Features

Rows Loaded	A, B, C, D, E
Number of Columns	19
Number of Rows	5
Backplane Architecture	Mezzanine
Number of Positions	95
PCB Mount Orientation	Right Angle

Signal Characteristics

Crosstalk Version	Standard
-------------------	----------



Data Rate	≤1 Gb/s
-----------	---------

Body Features

Primary Product Color	Gray
-----------------------	------

Contact Features

Contact Underplating Material	Nickel
-------------------------------	--------

Contact Base Material	Phosphor Bronze
-----------------------	-----------------

CompactPCI Designation	None
------------------------	------

PCB Contact Termination Area Plating Material	Tin
---	-----

Feedthrough Post Length	3.7 mm
-------------------------	--------

Contact Type	Socket
--------------	--------

Contact Mating Area Plating Material	Gold (Au)
--------------------------------------	-----------

Contact Mating Area Plating Material Thickness	.76 μm[30 μin]
--	----------------

Contact Current Rating (Max)	1.5 A
------------------------------	-------

Termination Features

Termination Method to PCB	Through Hole - Press-Fit
---------------------------	--------------------------

Mechanical Attachment

Connector Mounting Type	Board Mount
-------------------------	-------------

Housing Features

Housing Material	Polyester GF
------------------	--------------

Centerline (Pitch)	2.54 mm[.1 in]
--------------------	----------------

Dimensions

Backplane Module Length	38 mm
-------------------------	-------

Usage Conditions

Operating Temperature Range	-55 – 125 °C[-67 – 257 °F]
-----------------------------	----------------------------

Operation/Application

Shielded	No
----------	----

Circuit Application	Power & Signal
---------------------	----------------

Industry Standards

UL Flammability Rating	UL 94V-0
------------------------	----------

Packaging Features

Packaging Method	Tray
------------------	------

Product Compliance

[For compliance documentation, visit the product page on TE.com>](#)

EU RoHS Directive 2011/65/EU	Compliant
EU ELV Directive 2000/53/EC	Not Yet Reviewed
China RoHS 2 Directive MIIT Order No 32, 2016	有害物质含量符合标准要求 No Restricted Substance(s) Above Threshold
EU REACH Regulation (EC) No. 1907/2006	Current ECHA Candidate List: JUNE 2025 (250) Candidate List Declared Against: JAN 2024 (240) Does not contain REACH SVHC
Halogen Content	Not Low Halogen - contains Br or Cl > 900 ppm.
Solder Process Capability	Not reviewed for solder process capability

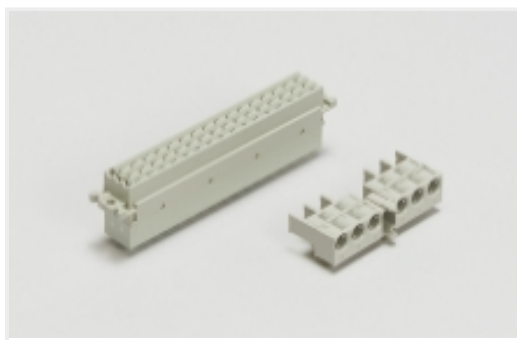
Product Compliance Disclaimer

This information is provided based on reasonable inquiry of our suppliers and represents our current actual knowledge based on the information they provided. This information is subject to change. The part numbers that TE has identified as EU RoHS compliant have a maximum concentration of 0.1% by weight in homogenous materials for lead, hexavalent chromium, mercury, PBB, PBDE, DBP, BBP, DEHP, DIBP, and 0.01% for cadmium, or qualify for an exemption to these limits as defined in the Annexes of Directive 2011/65/EU (RoHS2). Finished electrical and electronic equipment products will be CE marked as required by Directive 2011/65/EU. Components may not be CE marked. Additionally, the part numbers that TE has identified as EU ELV compliant have a maximum concentration of 0.1% by weight in homogenous materials for lead, hexavalent chromium, and mercury, and 0.01% for cadmium, or qualify for an exemption to these limits as defined in the Annexes of Directive 2000/53/EC (ELV). Regarding the REACH Regulation, the information TE provides on SVHC in articles for this part number is based on the latest European Chemicals Agency (ECHA) 'Guidance on requirements for substances in articles' posted at this URL: <https://echa.europa.eu/guidance-documents/guidance-on-reach>

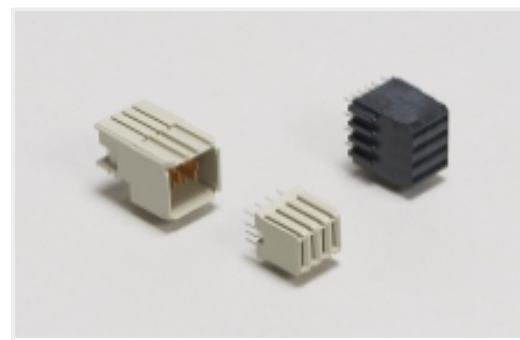
Compatible Parts



Also in the Series | [Z-PACK 2mm HM](#)



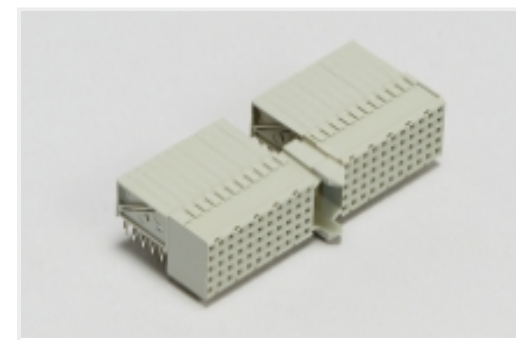
Backplane Connector Housings(4)



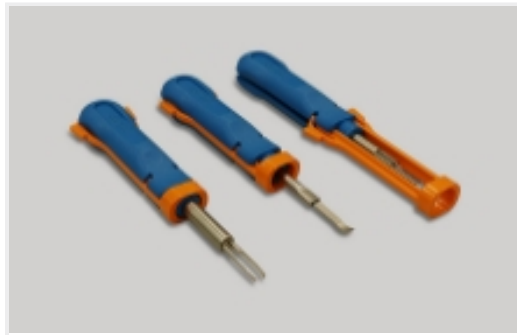
Backplane Power Connectors(1)



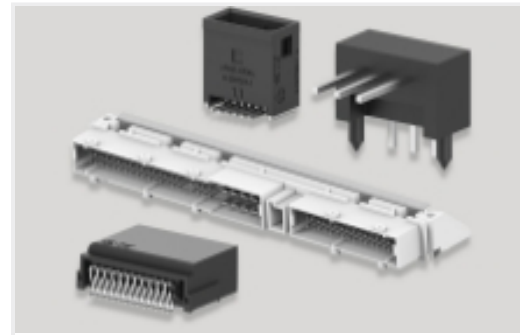
Connector Caps & Covers(62)



Hard Metric Backplane Connectors (264)



Insertion & Extraction Tools(2)



PCB Headers & Receptacles(46)

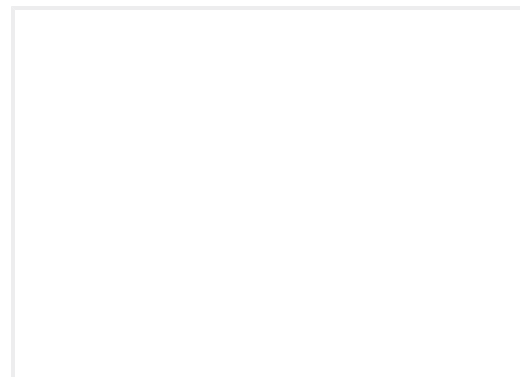


Rectangular Power Connectors(46)

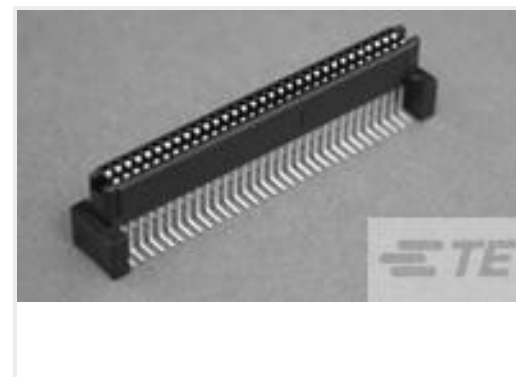
Customers Also Bought



TE Part #234064-E
STVBTL BUT 100 CSI 2026 207 * J 2 34093



TE Part #6162-231-1677
COAX PIN ASSY



TE Part #120523-1
1FHR,64,30A/P,S,N,S13



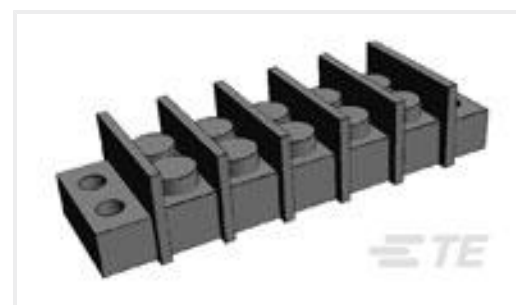
TE Part #530153-2
TDM SPRING SHUNT ASSY 2 POS



TE Part #749805-7
KIT,HDP-20,PLUG,SIZE 1, 9 POSN



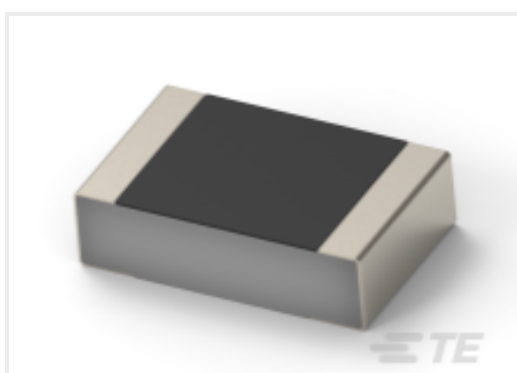
TE Part #1-1393258-7
V23047-A1024-A511



TE Part #1546306-5
5P .374" DR BARRIER STRIP



TE Part #1825138-3
A201KZQ04



TE Part #1-2176452-4
CPF 0201 732R 0.1% 25ppm 1K RL



TE Part #YDIV43E11-35PAC009
RECP ASSY

Documents



Product Drawings

Z-PACK/B19 RAF 95P EON

English

CAD Files

3D PDF

3D

Customer View Model

[ENG_CVM_CVM_2392852-1_1.2d_dxf.zip](#)

English

Customer View Model

[ENG_CVM_CVM_2392852-1_1.3d_igs.zip](#)

English

Customer View Model

[ENG_CVM_CVM_2392852-1_1.3d_stp.zip](#)

English

By downloading the CAD file I accept and agree to the [Terms and Conditions](#) of use.

Product Specifications

Application Specification

English