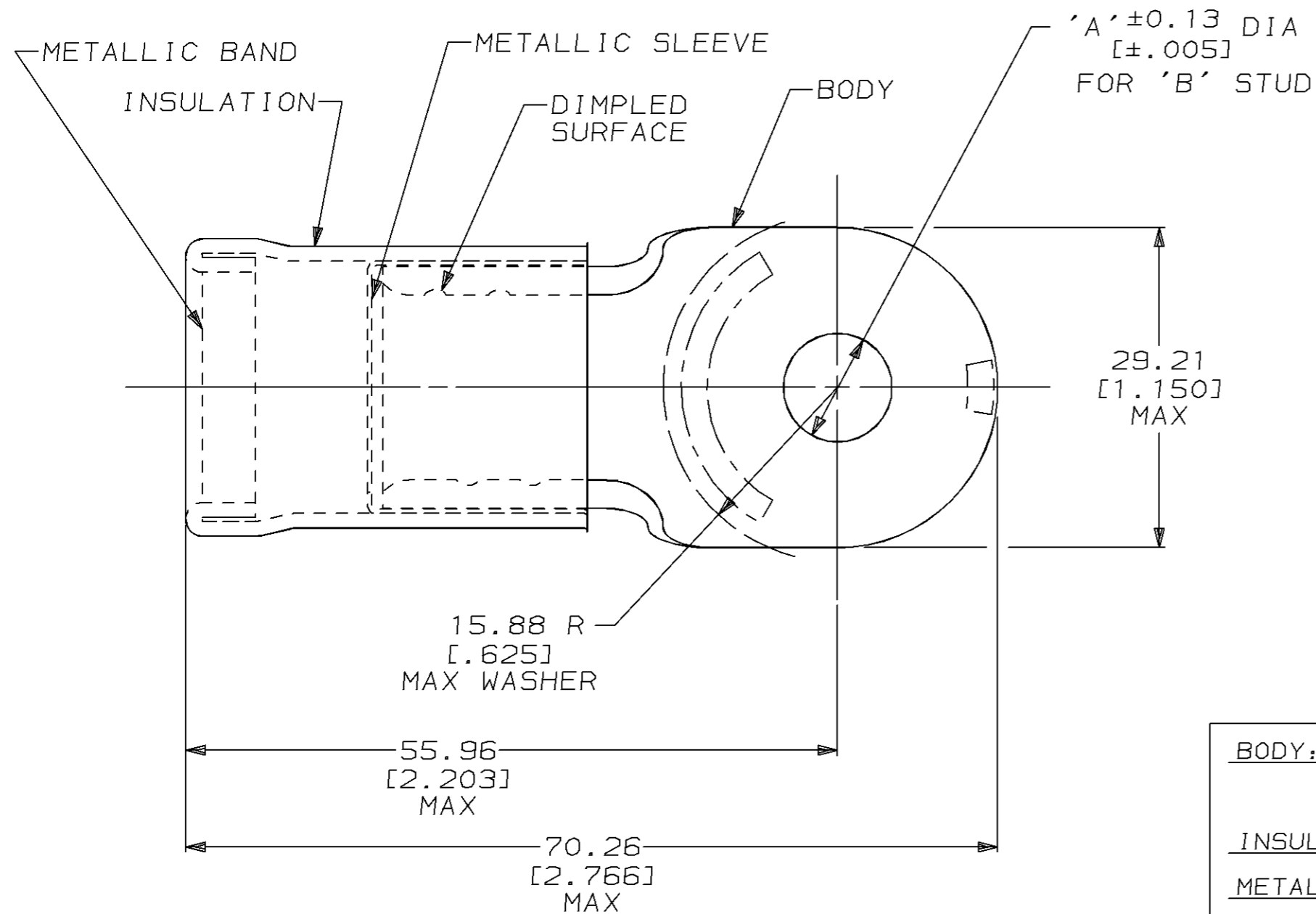


THIS DRAWING IS UNPUBLISHED. RELEASED FOR PUBLICATION ,19 .
 © COPYRIGHT 19 BY AMP INCORPORATED. ALL RIGHTS RESERVED.

LOC	DIST	REVISIONS			
P	LTR	DESCRIPTION	DATE	DWN	APVD
G	14	K	REVISED & REDRAWN PER 0L20-0151-96	10FEB97	DKS DMS

AMP PART NUMBER	'A'	'B'
322061	9.91 [.390]	3/8
2-322061-2	6.73 [.265]	1/4

OBSOLETE



1 MATERIAL THK: 2.59 ± 0.08 [.102 ± .003]
 2 WIRE INSULATION: 20.29 [.799] MAX DIA

<u>BODY:</u> COPPER PER ASTM B-152 TIN PL 0.00254 [.000100] MIN THK PER MIL-T-10727	2-322061-2 OBSOLETE
<u>INSULATION:</u> PVC <u>COLOR:</u> BLUE	
<u>METALLIC SLEEVE:</u> COPPER PER ASTM B-152	322061
<u>METALLIC BAND:</u> STEEL PER ASTM A-109	
MATERIAL & FINISH	AMP PART NUMBER

AMP INCORPORATED
CUSTOMER SERVICE SYSTEMS

FOR ADDITIONAL PRODUCT INFORMATION OR COPIES OF DRAWINGS AND TECHNICAL DOCUMENTS	PRODUCT INFORMATION CENTER 1-800-522-6752	RECOMMENDED OPERATING TEMPERATURE: 105°C MAX
FOR APPLICATION TOOLING INFORMATION	TOOLING ASSISTANCE CENTER 1-800-722-1111	VOLTAGE RATING: NOT APPLICABLE
FOR ORDER ENTRY	1-800-526-5142	WIRE CROSS SECTIONAL AREA RANGE: 96.3-117.0mm² [190,000-231,000] CJR MILS SOLID OR STRANDED

THIS DRAWING IS A CONTROLLED DOCUMENT.

DIMENSIONS: mm [INCHES]	TOLERANCES UNLESS OTHERWISE SPECIFIED:
	0 PLC ±-
	1 PLC ±-
	2 PLC ±0.20 [.008]
	3 PLC ±-
	4 PLC ±-
	ANGLES ±5°

MATERIAL: SEE TABLE
 FINISH: SEE TABLE

DWN DK SCHRUM 10FEB97	AMP AMP Incorporated Harrisburg, PA 17105-3608
CHK DM SWARTZ 11FEB97	
APVD JL MECKLEY 11FEB97	
PRODUCT SPEC	NAME TERMINAL ASSEMBLY, RING TONGUE, AMPLI-BOND™, WIRE SIZE: 4/0 AWG
APPLICATION SPEC	SIZE A3
WEIGHT -	CAGE CODE 00779
CUSTOMER DRAWING	DRAWING NO C-322061
	SCALE 2:1
	SHEET 1 OF 1
	REV K