

2299940-5 ✓ ACTIVE



zQSFP+/QSFP28

TE Internal #: 2299940-5

zQSFP+, Cage Assembly with Integrated Connector, .8mm [.032in] Centerline, Signal, Operating Temperature Range -40 – 85 °C [-40 – 185 °F]

[View on TE.com >](#)

Connectors > Pluggable IO Connectors & Cages



Pluggable I/O Product Type: **Cage Assembly with Integrated Connector**

Centerline (Pitch): **.8 mm [ .032 in ]**

Sealable: **No**

Circuit Application: **Signal**

Operating Temperature Range: **-40 – 85 °C [ -40 – 185 °F ]**

## Features

### Product Type Features

Cage Type	Stacked
Thermal Accessory Type Included	Heat Sink
Pluggable I/O Product Type	Cage Assembly with Integrated Connector
Sealable	No
Form Factor	zQSFP+

### Configuration Features

Number of Rear EONs per Port Column	3
Number of Positions	76
Number of Ports	2
Port Matrix Configuration	2 x 1

### Electrical Characteristics

Data Rate (Max)	25 Gb/s
-----------------	---------

### Body Features

Heat Sink Style	Fin
-----------------	-----



Heat Sink Finish	Anodized Black
Heat Sink Height	6.77 mm[.266 in]
Heat Sink Height Class	Custom
<b>Contact Features</b>	
Contact Current Rating (Max)	.5 A
Contact Underplating Material	Tin
Contact Mating Area Plating Material	Gold (Au)
PCB Contact Termination Area Plating Material	Gold
Contact Mating Area Plating Material Thickness	30 µm[.76 µin]
<b>Termination Features</b>	
Termination Method to PCB	Through Hole - Press-Fit
Termination Post & Tail Length	2 mm[.079 in]
<b>Housing Features</b>	
Cage Material	Nickel Silver
Centerline (Pitch)	.8 mm[.032 in]
<b>Dimensions</b>	
PCB Thickness (Recommended)	1.59 mm[.064 in]
<b>Usage Conditions</b>	
Operating Temperature Range	-40 – 85 °C[-40 – 185 °F]
<b>Operation/Application</b>	
Pluggable I/O Applications	Thermally Enhanced
Heat Sink Compatible	No
Circuit Application	Signal
<b>Industry Standards</b>	
UL Flammability Rating	UL 94V-0
<b>Packaging Features</b>	
Packaging Method	Box & Tray
<b>Other</b>	
Included Lightpipe	Yes
EMI Containment Feature Type	Internal/External EMI Springs



## Product Compliance

[For compliance documentation, visit the product page on TE.com>](#)

EU RoHS Directive 2011/65/EU	Compliant
EU ELV Directive 2000/53/EC	Compliant
China RoHS 2 Directive MIIT Order No 32, 2016	No Restricted Materials Above Threshold
EU REACH Regulation (EC) No. 1907/2006	Current ECHA Candidate List: JAN 2025 (247) Candidate List Declared Against: JAN 2025 (247) Does not contain REACH SVHC
Halogen Content	Not Low Halogen - contains Br or Cl > 900 ppm.
Solder Process Capability	Not applicable for solder process capability

### Product Compliance Disclaimer

This information is provided based on reasonable inquiry of our suppliers and represents our current actual knowledge based on the information they provided. This information is subject to change. The part numbers that TE has identified as EU RoHS compliant have a maximum concentration of 0.1% by weight in homogenous materials for lead, hexavalent chromium, mercury, PBB, PBDE, DBP, BBP, DEHP, DIBP, and 0.01% for cadmium, or qualify for an exemption to these limits as defined in the Annexes of Directive 2011/65/EU (RoHS2). Finished electrical and electronic equipment products will be CE marked as required by Directive 2011/65/EU. Components may not be CE marked. Additionally, the part numbers that TE has identified as EU ELV compliant have a maximum concentration of 0.1% by weight in homogenous materials for lead, hexavalent chromium, and mercury, and 0.01% for cadmium, or qualify for an exemption to these limits as defined in the Annexes of Directive 2000/53/EC (ELV). Regarding the REACH Regulation, the information TE provides on SVHC in articles for this part number is based on the latest European Chemicals Agency (ECHA) 'Guidance on requirements for substances in articles' posted at this URL: <https://echa.europa.eu/guidance-documents/guidance-on-reach>

## Compatible Parts



TE Part # 2829040-6  
QSFP IB EDR, 30AWG, 2.0M



TE Part # 2829040-2  
QSFP IB EDR, 33AWG, 1.0M



TE Part # 2821033-8  
QSFP TO [4]SFP+, 28G, 1M, 33AWG



TE Part # 2829040-4  
QSFP IB EDR, 30AWG, 1.0M

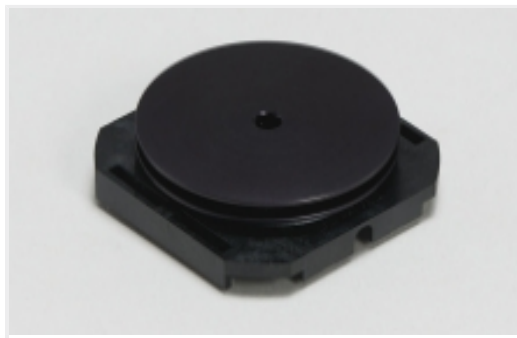


TE Part # 2829040-7  
QSFP IB EDR, 26AWG, 2.0M

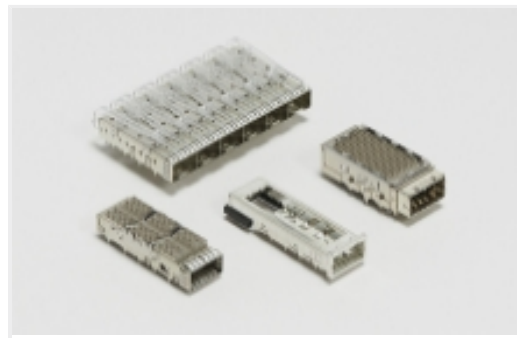


TE Part # 2829040-8  
QSFP IB EDR, 26AWG, 3.0M

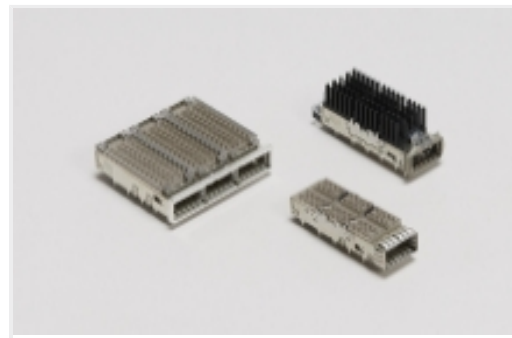
## Also in the Series | zQSFP+/QSFP28



Heat Sinks(4)

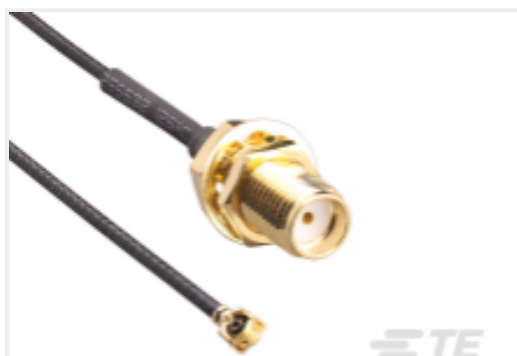
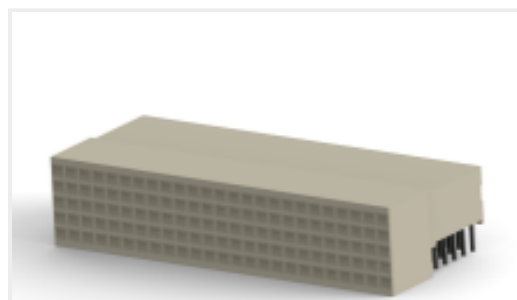


Pluggable IO Connectors &amp; Cages(394)



QSFP, QSFP+ &amp; zQSPF+(394)

## Customers Also Bought

TE Part #CSH-SGFB-100-UFFR  
SMA to U.FL/MHF1 100mm 1.32 ODTE Part #5-103634-3  
04 MTE HDR SRRA LATCH.100CL LFTE Part #2-746610-1  
010 DIP PLUG 100CL TINTE Part #2-1462037-3  
IM06GR=IM Relay 140mW 12VTE Part #3-1827253-6  
.5FHP05H,220,S,GIG,08/Sn,HT,NSYesTE Part #CAT-472-Z12553  
HM Receptacle Connector: Traditional  
Backplane, Coplanar, 2mmTE Part #3-6318490-6  
.5FHR04H,220,S,GIG,08/Sn,HT,NSYesTE Part #6469081-1  
HMZD 3PR, RECEPTACLE ASSEMBLY

## Documents

### CAD Files

3D PDF

3D

### Customer View Model

[ENG\\_CVM\\_CVM\\_2299940-5\\_A.2d\\_dxf.zip](#)

English

### Customer View Model

[ENG\\_CVM\\_CVM\\_2299940-5\\_A.3d\\_igs.zip](#)

English

### Customer View Model

[ENG\\_CVM\\_CVM\\_2299940-5\\_A.3d\\_stp.zip](#)

English

By downloading the CAD file I accept and agree to the [Terms and Conditions](#) of use.

## Product Specifications



## Application Specification

English