

2291392-1 ✓ ACTIVE

AMP | FAKRA RF Connector System

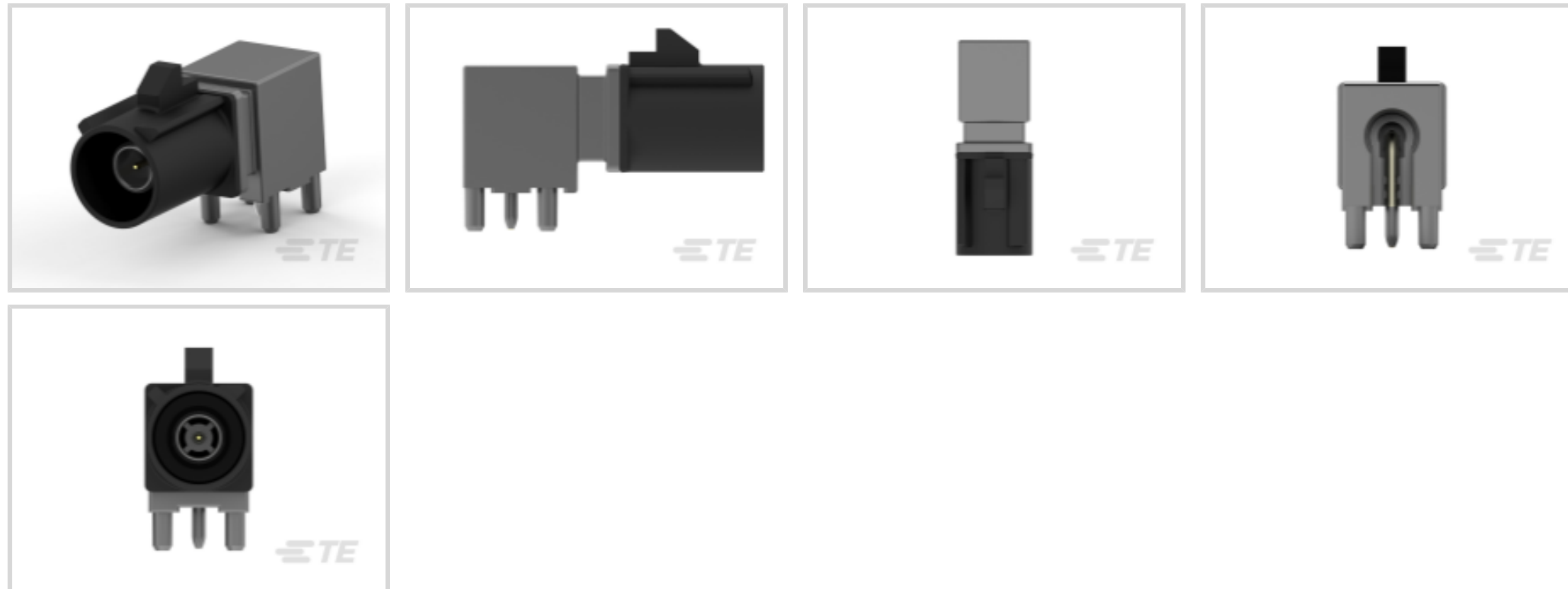
TE Internal #: 2291392-1

Wire-to-Board, Horizontal, 1 Position, Board Mount, B Code,  
Signal, -40 – 105 °C [-40 – 221 °F], FAKRA RF Connector System,  
Data Connectivity Headers

[View on TE.com >](#)



Automotive Parts > Automotive Connectors > Data Connectivity Headers



Connector System: **Wire-to-Board**

Sealable: **No**

Shielded: **No**

PCB Mount Orientation: **Horizontal**

Number of Positions: **1**

### Features

#### Product Type Features

|                                   |                       |
|-----------------------------------|-----------------------|
| Connector & Contact Terminates To | Printed Circuit Board |
| Mixed & Hybrid Connector          | No                    |
| Connector System                  | Wire-to-Board         |
| Sealable                          | No                    |

#### Configuration Features

|                       |            |
|-----------------------|------------|
| Number of Rows        | 1          |
| PCB Mount Orientation | Horizontal |
| Number of Positions   | 1          |

#### Electrical Characteristics

|           |      |
|-----------|------|
| Impedance | 50 Ω |
|-----------|------|

#### Body Features

|                         |   |
|-------------------------|---|
| Connector & Keying Code | B |
|-------------------------|---|

#### Contact Features

|  |  |
|--|--|
|  |  |
|--|--|



|  |                |
|--|----------------|
| Outer Contact Plating Material               | Tin (Sn)       |
| RF Connector Center Contact Plating Material | Tin (Sn)       |
| Contact Mating Area Plating Material         | Gold (Au)      |
| Center Contact                               | With           |
| Contact Type                                 | Pin            |
| Mating Pin Diameter                          | .51 mm[.02 in] |
| Contact Current Rating (Max)                 | 1 A            |

### Termination Features

|                           |                       |
|---------------------------|-----------------------|
| Termination Method to PCB | Through Hole - Solder |
|---------------------------|-----------------------|

### Mechanical Attachment

|                          |             |
|--------------------------|-------------|
| PCB Mount Retention Type | Solder Tail |
| Connector Mounting Type  | Board Mount |

### Housing Features

|               |           |
|---------------|-----------|
| Housing Color | Jet Black |
|---------------|-----------|

### Usage Conditions

|                             |                            |
|-----------------------------|----------------------------|
| Operating Temperature (Max) | 105 °C[221 °F]             |
| Operating Temperature Range | -40 – 105 °C[-40 – 221 °F] |

### Operation/Application

|                           |                       |
|---------------------------|-----------------------|
| Operating Frequency Range | 0 – 6 GHz             |
| Solder Process            | Reflow Solder Capable |
| Assembly Process Feature  | Board Standoff        |
| Shielded                  | No                    |
| Circuit Application       | Signal                |

### Industry Standards

|   |             |
|---|-------------|
| Compatible With Agency/Standards Products | DIN 72594-1 |
| UL Flammability Rating                    | UL 94HB     |

### Packaging Features

|                  |      |
|------------------|------|
| Packaging Method | Reel |
|------------------|------|

### Other

|                     |        |
|---------------------|--------|
| Dielectric Material | PCT GF |
|---------------------|--------|

## Product Compliance



[For compliance documentation, visit the product page on TE.com>](#)

|   |  |
|---|--|
| EU RoHS Directive 2011/65/EU                  | Compliant  |
| EU ELV Directive 2000/53/EC                   | Compliant  |
| China RoHS 2 Directive MIIT Order No 32, 2016 | No Restricted Materials Above Threshold  |
| EU REACH Regulation (EC) No. 1907/2006        | Current ECHA Candidate List: JAN 2025 (247)<br>Candidate List Declared Against: JUNE 2024 (241)<br>Does not contain REACH SVHC |
| Halogen Content                               | BFR/CFR/PVC Free, but Br/Cl >900 ppm in other sources.   |
| Solder Process Capability                     | Pin-in-Paste capable to 260°C  |

Product Compliance Disclaimer

This information is provided based on reasonable inquiry of our suppliers and represents our current actual knowledge based on the information they provided. This information is subject to change. The part numbers that TE has identified as EU RoHS compliant have a maximum concentration of 0.1% by weight in homogenous materials for lead, hexavalent chromium, mercury, PBB, PBDE, DBP, BBP, DEHP, DIBP, and 0.01% for cadmium, or qualify for an exemption to these limits as defined in the Annexes of Directive 2011/65/EU (RoHS2). Finished electrical and electronic equipment products will be CE marked as required by Directive 2011/65/EU. Components may not be CE marked. Additionally, the part numbers that TE has identified as EU ELV compliant have a maximum concentration of 0.1% by weight in homogenous materials for lead, hexavalent chromium, and mercury, and 0.01% for cadmium, or qualify for an exemption to these limits as defined in the Annexes of Directive 2000/53/EC (ELV). Regarding the REACH Regulation, the information TE provides on SVHC in articles for this part number is based on the latest European Chemicals Agency (ECHA) 'Guidance on requirements for substances in articles' posted at this URL: <https://echa.europa.eu/guidance-documents/guidance-on-reach>

## Compatible Parts



Also in the Series | [FAKRA RF Connector System](#)



Automotive Connector Caps & Covers  
(3)



Connector Contacts(1)



Data Connectivity Housings(507)



Power Contacts(1)

## Customers Also Bought



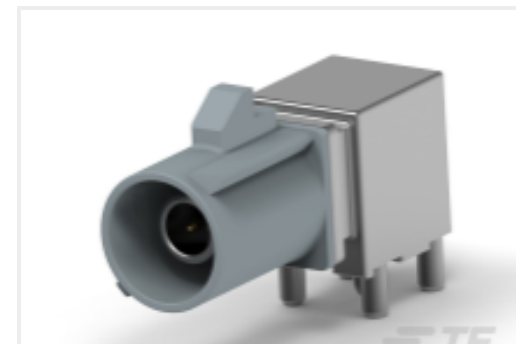
TE Part #826470-4  
2X4P MOD II SHROUDED HEADER,  
RT ANG.



TE Part #1461404-1  
OJ-SH-105LM,000



TE Part #2291362-1  
4POS,PIN DIA 0.6,HEADER ASSY,  
CODE A



TE Part #2291392-7  
MALE ASM, 1 POS, R/A, PCB, FAKRA  
CODE A



TE Part #2317515-1  
2X10POS,NANOMQS,HDR ASSY,  
90DEG,SMD,COD A



TE Part #1-2317779-3  
24POS,HYBRID,HDR ASSY,90DEG,  
SLDR



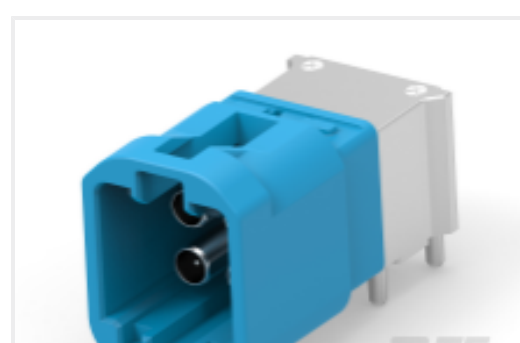
TE Part #2326784-1  
32POS,TAB0.64X0.64,HDR ASSY,  
90DEG,SLDR



TE Part #2380000-1  
SMB HEADER, ASSEMBLY



TE Part #2405707-1  
4P,MATE-AX,HDR ASSY,90DEG,COD  
A



TE Part #2405707-3  
4P,MATE-AX,HDR ASSY,90DEG,COD  
C

## Documents

### CAD Files

[3D PDF](#)

[3D](#)

### Customer View Model

[ENG\\_CVM\\_CVM\\_2291392-1\\_1.2d\\_dxf.zip](#)

English

### Customer View Model

[ENG\\_CVM\\_CVM\\_2291392-1\\_1.3d\\_igs.zip](#)



English

Customer View Model

[ENG\\_CVM\\_CVM\\_2291392-1\\_1.3d\\_stp.zip](#)

English

By downloading the CAD file I accept and agree to the [Terms and Conditions](#) of use.

**Product Specifications**

[Application Specification](#)

English