



Power Triple Lock

TE Internal #: 2-1971778-3

TPA (Terminal Position Assurance), Natural, Glass-Filled PBT, 6 Position, Power Triple Lock

[View on TE.com >](#)

Connectors > Connector Accessories > Connector Hardware



Hardware Accessory Function: **Position Assurance**

Connector Hardware Accessory Type: **TPA (Terminal Position Assurance)**

Primary Product Color: **Natural**

Primary Product Material: **Glass-Filled PBT**

Number of Positions: **6**

**Features**

**Product Type Features**

Hardware Accessory Function	Position Assurance
Connector Hardware Accessory Type	TPA (Terminal Position Assurance)

**Configuration Features**

Number of Positions	6
---------------------	---

**Body Features**

Primary Product Color	Natural
Primary Product Material	Glass-Filled PBT

**Usage Conditions**

Operating Temperature (Max)	140 °C[284 °F]
Operating Temperature Range	-55 – 140 °C[-67 – 284 °F]

**Industry Standards**

UL Flammability Rating	UL 94V-0
Glow Wire Rating	Hot Wire Part - Not Glow Wire

**Packaging Features**



Packaging Method	Bag
Packaging Quantity	1400

### Product Compliance

[For compliance documentation, visit the product page on TE.com>](#)

EU RoHS Directive 2011/65/EU	Compliant
EU ELV Directive 2000/53/EC	Compliant
China RoHS 2 Directive MIIT Order No 32, 2016	No Restricted Materials Above Threshold
EU REACH Regulation (EC) No. 1907/2006	Current ECHA Candidate List: JAN 2025 (247) Candidate List Declared Against: JAN 2025 (247) Does not contain REACH SVHC
Halogen Content	Not Low Halogen - contains Br or Cl > 900 ppm.
Solder Process Capability	Not reviewed for solder process capability

#### Product Compliance Disclaimer

This information is provided based on reasonable inquiry of our suppliers and represents our current actual knowledge based on the information they provided. This information is subject to change. The part numbers that TE has identified as EU RoHS compliant have a maximum concentration of 0.1% by weight in homogenous materials for lead, hexavalent chromium, mercury, PBB, PBDE, DBP, BBP, DEHP, DIBP, and 0.01% for cadmium, or qualify for an exemption to these limits as defined in the Annexes of Directive 2011/65/EU (RoHS2). Finished electrical and electronic equipment products will be CE marked as required by Directive 2011/65/EU. Components may not be CE marked. Additionally, the part numbers that TE has identified as EU ELV compliant have a maximum concentration of 0.1% by weight in homogenous materials for lead, hexavalent chromium, and mercury, and 0.01% for cadmium, or qualify for an exemption to these limits as defined in the Annexes of Directive 2000/53/EC (ELV). Regarding the REACH Regulation, the information TE provides on SVHC in articles for this part number is based on the latest European Chemicals Agency (ECHA) 'Guidance on requirements for substances in articles' posted at this URL: <https://echa.europa.eu/guidance-documents/guidance-on-reach>

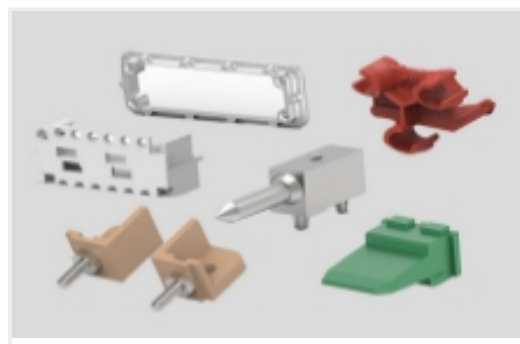
### Compatible Parts

 <p>TE Part # 1-2232266-1 PTL 2X3 PLUG HSG HOT WIRE KEY A BLK</p>	 <p>TE Part # 1-2232357-6 PTL 3X3 PLUG HSG HOT WIRE KEY A BLK</p>	 <p>TE Part # 1-2232264-1 PTL 2X3 CAP PANEL MT HOT WIRE KEY A BLK</p>	 <p>TE Part # 1-2232356-6 PTL 3X3 CAP PANEL MT HOT WIRE KEY A BLK</p>
--	--	--	--

### Also in the Series | [Power Triple Lock](#)



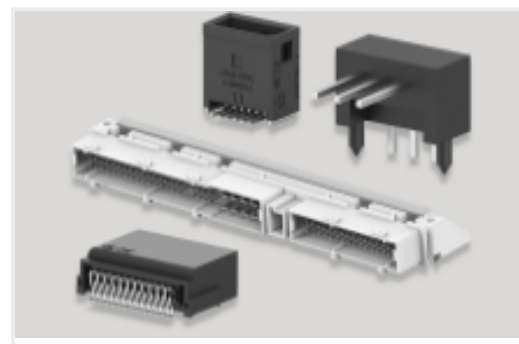
Connector Contacts(26)



Connector Hardware(12)



Insertion & Extraction Tools(1)



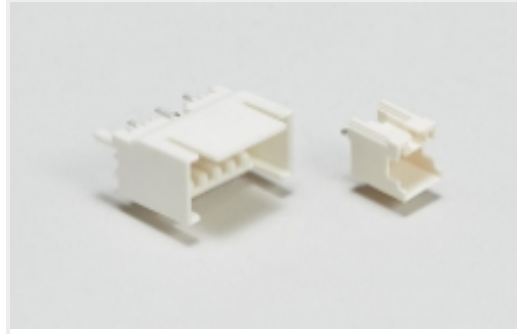
PCB Headers & Receptacles(21)



Power Contacts(26)



Rectangular Power Connectors(301)



Wire-to-Board Headers & Receptacles (21)

## Customers Also Bought



TE Part #62811-2  
250 FASTON FLAG REC 18-14 AWG TPBR



TE Part #5-177901-1  
POWER DBL LOCK PLUG HSG 6P (GWT)



TE Part #1-350720-2  
09P UMNL V0 PLUG HSG RED



TE Part #3-647449-1  
SL156 RCPT,SPCL LUBE, LF



TE Part #794714-1  
06P UMNL CAP HSG NATL,PAN MNT



TE Part #794714-3  
06P UMNL CAP HSG RED,PAN MNT



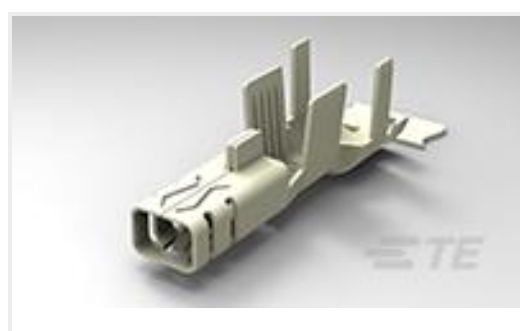
TE Part #1-794761-2  
09P UMNL CAP HSG,P/MT,V0,RED



TE Part #1586887-1  
06P UMNL CAP HSG, P/M, GW



TE Part #2-1971773-3  
PTL 1X3 PLUG HSG STD TEMP KEY B PUR



TE Part #1971787-2  
PTL RECEPTACLE CONTACT, 2X18 AWG

## Documents



### CAD Files

#### 3D PDF

3D

#### Customer View Model

[ENG\\_CVM\\_CVM\\_2-1971778-3\\_A.2d\\_dxf.zip](#)

English

#### Customer View Model

[ENG\\_CVM\\_CVM\\_2-1971778-3\\_A.3d\\_igs.zip](#)

English

#### Customer View Model

[ENG\\_CVM\\_CVM\\_2-1971778-3\\_A.3d\\_stp.zip](#)

English

By downloading the CAD file I accept and agree to the [Terms and Conditions](#) of use.

### Product Specifications

#### Application Specification

English