

2187606-1 ✓ ACTIVE

STRADA Whisper 3.9mm

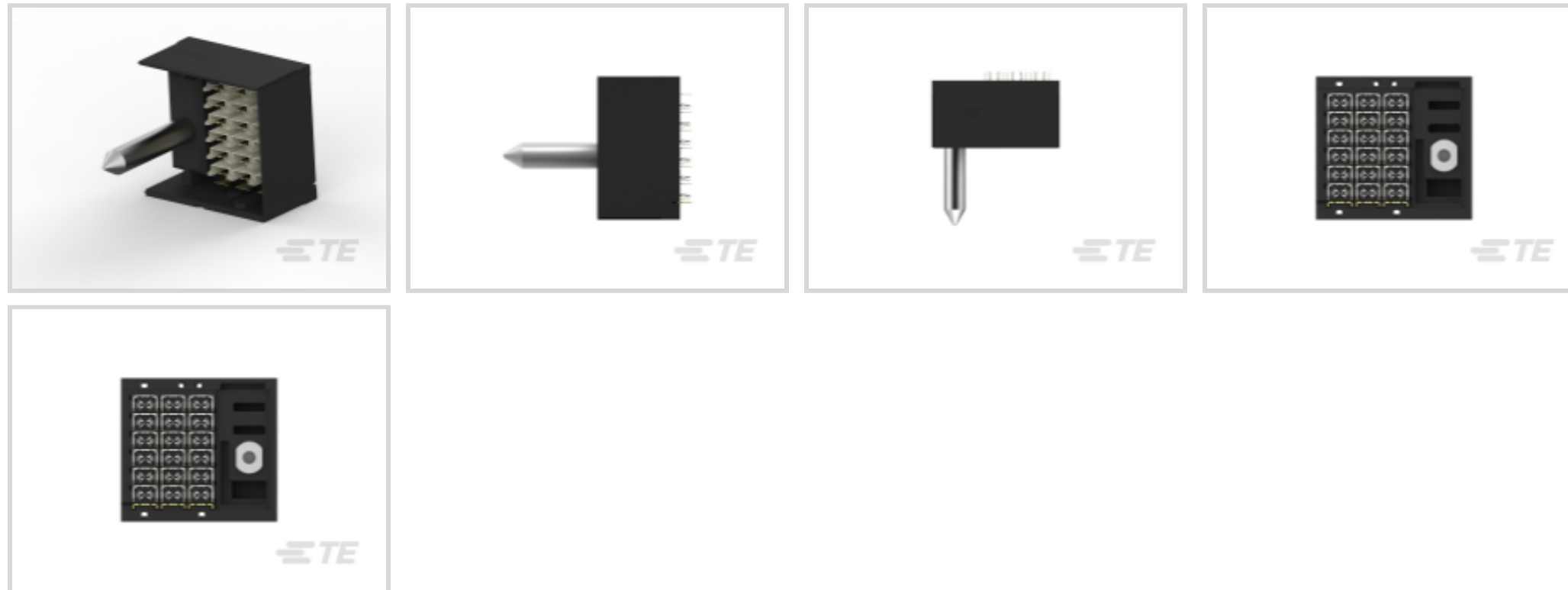
TE Internal #: 2187606-1

36 Position High Speed Backplane Connector, 6 Row, 3 Column,
PCB Mount Header, Vertical, Fully Shrouded, STRADA Whisper 3.9
mm

[View on TE.com >](#)



Connectors > PCB Connectors > Backplane Connectors > High Speed Backplane Connectors



Number of Positions: **36**

Row-to-Row Spacing: **2.5 mm [.098 in]**

Mating Alignment: **With**

Mating Alignment Type: **Keyed**

Number of Rows: **6**

Features

Product Type Features

Signal Arrangement	Differential
Connector & Contact Terminates To	Printed Circuit Board
Connector System	Board-to-Board
Backplane Module Type	Center
PCB Connector Type	PCB Mount Header
Shroud Style	Fully Shrouded

Configuration Features

Number of Ground Positions	21
Number of Signal Positions	36
Number of Power Positions	36
Backplane Architecture	Traditional Backplane
Pairs per Column	6
Number of Positions	36
Number of Rows	6



Number of Columns	3
-------------------	---

PCB Mount Orientation	Vertical
-----------------------	----------

Electrical Characteristics

Operating Voltage	80 VAC
-------------------	--------

Impedance	85 Ω
-----------	-------------

Signal Characteristics

Data Rate	56 Gb/s
-----------	---------

Differential Impedance	85 Ω
------------------------	-------------

Number of Differential Pairs per Column	4
---	---

Body Features

Shield Material	Copper Alloy
-----------------	--------------

Primary Product Color	Black
-----------------------	-------

Contact Features

Contact Shape & Form	Dual Beam
----------------------	-----------

Contact Base Material	Copper Alloy
-----------------------	--------------

PCB Contact Termination Area Plating Material	Tin
---	-----

Contact Type	Pin
--------------	-----

Contact Current Rating (Max)	.4 A
------------------------------	------

Termination Features

Termination Method to PCB	Through Hole - Press-Fit
---------------------------	--------------------------

Mechanical Attachment

Guide Hardware	With
----------------	------

PCB Mount Retention	With
---------------------	------

Mating Retention	Without
------------------	---------

PCB Mount Retention Type	Action/Compliant Tail
--------------------------	-----------------------

Mating Alignment	With
------------------	------

Mating Alignment Type	Keyed
-----------------------	-------

Housing Features

Number of Shrouded Sides	3
--------------------------	---

Housing Material	LCP
------------------	-----

Centerline (Pitch)	3.9 mm [.154 in]
--------------------	------------------

Dimensions



Row-to-Row Spacing	2.5 mm[.098 in]
--------------------	-----------------

Usage Conditions

Operating Temperature Range	-55 – 105 °C[-67 – 221 °F]
-----------------------------	----------------------------

Operation/Application

Durability Rating	200 Cycles
-------------------	------------

Circuit Application	Signal
---------------------	--------

Industry Standards

Compatible With Agency/Standards Products	UL
---	----

UL Flammability Rating	UL 94V-0
------------------------	----------

Compatible With Approved Standards Products	UL E28476
---	-----------

Packaging Features

Packaging Method	Tube
------------------	------

Product Compliance

[For compliance documentation, visit the product page on TE.com>](#)

EU RoHS Directive 2011/65/EU	Compliant
------------------------------	-----------

EU ELV Directive 2000/53/EC	Compliant
-----------------------------	-----------

China RoHS 2 Directive MIIT Order No 32, 2016	No Restricted Materials Above Threshold
---	---

EU REACH Regulation (EC) No. 1907/2006	Current ECHA Candidate List: JAN 2025 (247) Candidate List Declared Against: JAN 2025 (247) Does not contain REACH SVHC
--	---

Halogen Content	Low Halogen - Br, Cl, F, I < 900 ppm per homogenous material. Also BFR/CFR/PVC Free
-----------------	---

Solder Process Capability	Not reviewed for solder process capability
---------------------------	--

Product Compliance Disclaimer

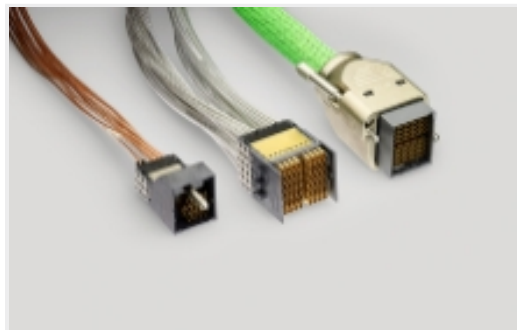
This information is provided based on reasonable inquiry of our suppliers and represents our current actual knowledge based on the information they provided. This information is subject to change. The part numbers that TE has identified as EU RoHS compliant have a maximum concentration of 0.1% by weight in homogenous materials for lead, hexavalent chromium, mercury, PBB, PBDE, DBP, BBP, DEHP, DIBP, and 0.01% for cadmium, or qualify for an exemption to these limits as defined in the Annexes of Directive 2011/65/EU (RoHS2). Finished electrical and electronic equipment products will be CE marked as required by Directive 2011/65/EU. Components may not be CE marked. Additionally, the part numbers that TE has identified as EU ELV compliant have a maximum concentration of 0.1% by weight in homogenous materials for lead, hexavalent chromium, and mercury, and 0.01% for cadmium, or qualify for an exemption to these limits as defined in the Annexes of Directive 2000/53/EC (ELV). Regarding the REACH Regulation, the information TE provides on SVHC in articles for this part number is based on the latest European Chemicals Agency (ECHA) 'Guidance on requirements for substances in articles' posted at this URL: <https://echa.europa.eu/guidance-documents/guidance-on-reach>

Compatible Parts

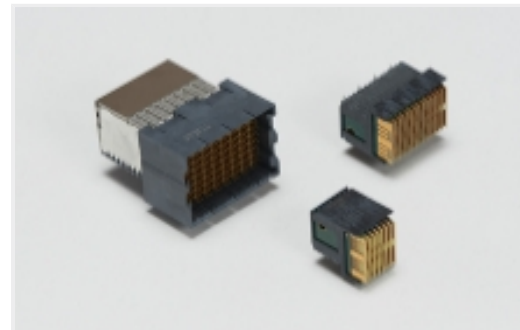


TE Part # 2187605-1
SW PIR RECT, 85OHM, 6X3IG

Also in the Series | STRADA Whisper 3.9mm



High Speed Backplane Cable
Assemblies(16)



High Speed Backplane Connectors(41)

Customers Also Bought



TE Part #2007816-3
IMP100S,H,V4P10C,UG,OEW46,5,5



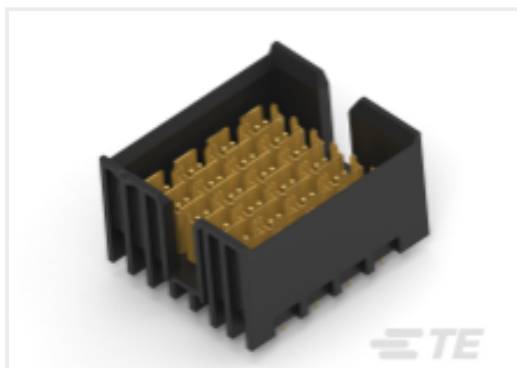
TE Part #2132464-1
IMP100O,R,RA4P8C,LG,39



TE Part #2132623-2
IMP100O,HMP,V4P8C,UG,DEW46,5,5



TE Part #2274853-1
SW RA RCP ASM, 4P, 6C, 85O, PIC



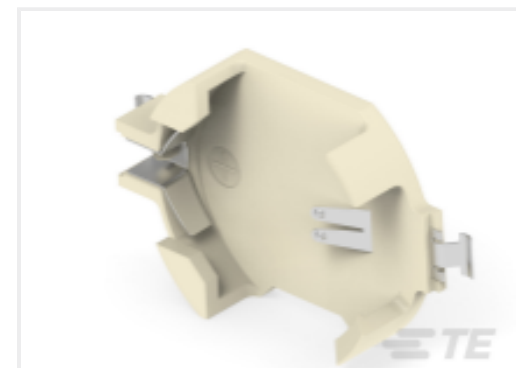
TE Part #2274854-1
SW HDR ASM, 4P, 6C, 85O, PIC



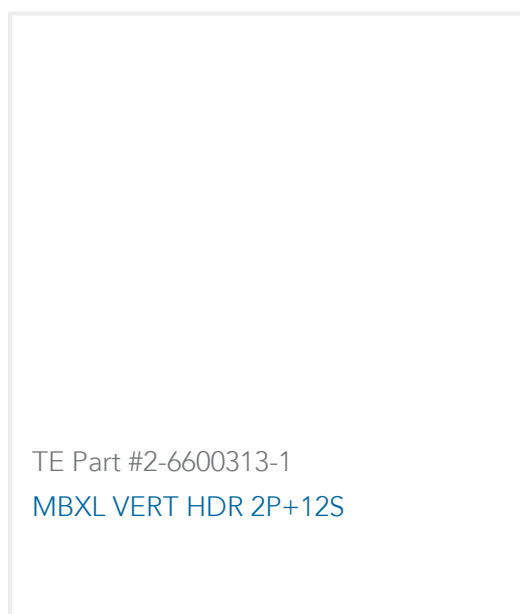
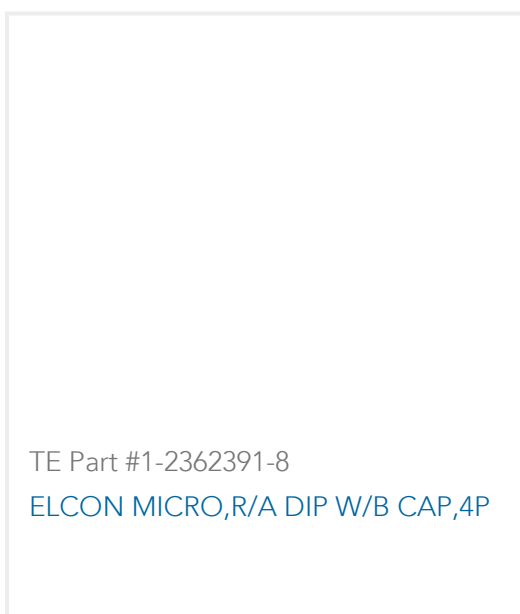
TE Part #2327679-2
RECEPTACLE ASSY, 56 POS, VERT,
GEN Z



TE Part #2-2013311-3
EMBOSS TAPE DDR3 204P 9.2H RVS
Au 0.76



TE Part #2335232-3
ASSY, SMT BATTERY CONN



Documents

Product Drawings

[SW PIR HDR RMP, 85OHM, 6X3IG DEW](#)

English

CAD Files

[3D PDF](#)

3D

Customer View Model

[ENG_CVM_CVM_2187606-1_A.2d_dxf.zip](#)

English

Customer View Model

[ENG_CVM_CVM_2187606-1_A.3d_igs.zip](#)

English

Customer View Model

[ENG_CVM_CVM_2187606-1_A.3d_stp.zip](#)

English

By downloading the CAD file I accept and agree to the [Terms and Conditions](#) of use.

Product Specifications

[Application Specification](#)

English