

216842-4 ✓ ACTIVE

FASTON | FASTON 250

TE Internal #: 216842-4

Tab PCB Terminal, 6.3 mm [.248 in] Tab Width, 1.45 mm [.057 in]

PCB Hole, Through Hole - Press-Fit, Silver Plating, Reel, FASTON 250

[View on TE.com >](#)



Terminals & Splices > PCB Terminals



PCB Terminal Type: **Tab**

PCB Thickness (Recommended): **1.6 mm [.063 in]**

Mating Tab Width: **6.3 mm [.248 in]**

Mating Tab Thickness: **.8 mm [.031 in]**

PCB Hole Diameter: **1.45 mm [.057 in]**

Features

Contact Features

| | |
|---|---|
| PCB Contact Termination Area Plating Material Thickness | 2.54 – 5 μm [100 – 196.85 μin] |
| Contact Underplating Material Thickness | 1.25 μm [49.21 μin] |
| Contact Mating Area Plating Material Thickness | 3 μm [118.11 μin] |
| PCB Terminal Type | Tab |
| Mating Tab Width | 6.3 mm[.248 in] |
| Mating Tab Thickness | .8 mm[.031 in] |
| Terminal Plating Material | Silver |
| Terminal Size | 6.35 |
| Terminal Orientation | Straight |

Termination Features

| | |
|---------------------------|--------------------------|
| Termination Method to PCB | Through Hole - Press-Fit |
| Product Terminates To | Printed Circuit Board |

Mechanical Attachment

| | |
|-------------------------|---------|
| Wire Insulation Support | Without |
|-------------------------|---------|



Dimensions

| | |
|-----------------------------|------------------|
| Extension Below Board | 5.5 mm[.216 in] |
| PCB Thickness (Recommended) | 1.6 mm[.063 in] |
| PCB Hole Diameter | 1.45 mm[.057 in] |
| Profile Height from PCB | 13 mm[.518 in] |

Usage Conditions

| | |
|-----------------------------|----------------------------|
| Insulation Option | Uninsulated |
| Operating Temperature Range | -30 – 110 °C[-22 – 230 °F] |

Packaging Features

| | |
|------------------|------|
| Packaging Method | Reel |
|------------------|------|

Product Compliance

For compliance documentation, visit the product page on [TE.com](#)>

| | |
|---|---|
| EU RoHS Directive 2011/65/EU | Compliant |
| EU ELV Directive 2000/53/EC | Compliant |
| China RoHS 2 Directive MIIT Order No 32, 2016 | No Restricted Materials Above Threshold |
| EU REACH Regulation (EC) No. 1907/2006 | Current ECHA Candidate List: JAN 2025 (247) Candidate List Declared Against: JAN 2025 (247) Does not contain REACH SVHC |
| Halogen Content | Low Halogen - Br, Cl, F, I < 900 ppm per homogenous material. Also BFR/CFR/PVC Free |
| Solder Process Capability | Not applicable for solder process capability |

Product Compliance Disclaimer

This information is provided based on reasonable inquiry of our suppliers and represents our current actual knowledge based on the information they provided. This information is subject to change. The part numbers that TE has identified as EU RoHS compliant have a maximum concentration of 0.1% by weight in homogenous materials for lead, hexavalent chromium, mercury, PBB, PBDE, DBP, BBP, DEHP, DIBP, and 0.01% for cadmium, or qualify for an exemption to these limits as defined in the Annexes of Directive 2011/65/EU (RoHS2). Finished electrical and electronic equipment products will be CE marked as required by Directive 2011/65/EU. Components may not be CE marked. Additionally, the part numbers that TE has identified as EU ELV compliant have a maximum concentration of 0.1% by weight in homogenous materials for lead, hexavalent chromium, and mercury, and 0.01% for cadmium, or qualify for an exemption to these limits as defined in the Annexes of Directive 2000/53/EC (ELV). Regarding the REACH Regulation, the information TE provides on SVHC in articles for this part number is based on the latest European Chemicals Agency (ECHA) 'Guidance on requirements for substances in articles' posted at this URL: <https://echa.europa.eu/guidance-documents/guidance-on-reach>

Compatible Parts



TE Part # 1955425-2
187 FASTON,TAB,TPPB



TE Part # CAT-P550
Pin Insertion Machine P550



TE Part # 735292-2
110 FASTON TAB TPBR



TE Part # 735084-2
110 FASTON TAB TPBR



TE Part # 735292-1
110 FASTON TAB BR



TE Part # CAT-P360
P360 Pin Insertion Machine



TE Part # 1217183-1
FASTON,SPECIAL FLAG,TAB,TNBR



TE Part # 964187-2
110 FASTON TAB NPBR



TE Part # 2688850-1
P300-C 4 HEAD



TE Part # CAT-P280
P280 PIN INSERTION MACHINE



TE Part # CAT-P100
Pin Insertion Machine P100



TE Part # 2410420-3
EP PIN INSERTION MACHINE



TE Part # 42115-6
250 FASTON TAB BR




TE Part # CAT-P300
Pin Insertion Machine P300




TE Part # 42115-4
250 FASTON TAB TPBR


Also in the Series | **FASTON 250**



Compression Connectors(4)



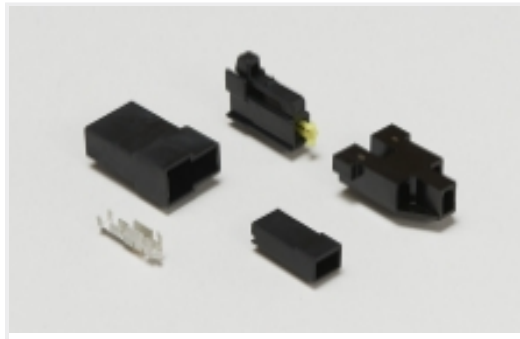
Crimp Terminal Housings(116)



Insertion & Extraction Tools(6)



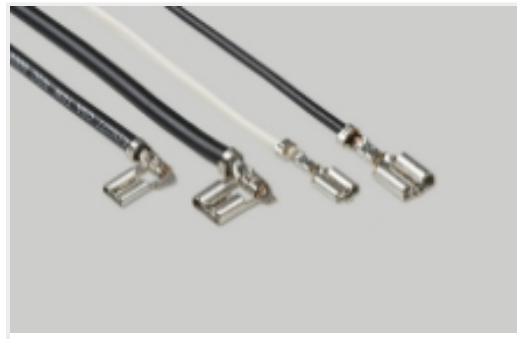
Insulation Boots & Sleeves(16)



Magnet Wire Terminals(1)



PCB Terminals(133)

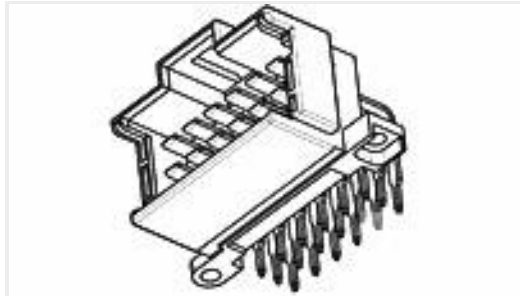


Quick Disconnects(421)



Splices(4)

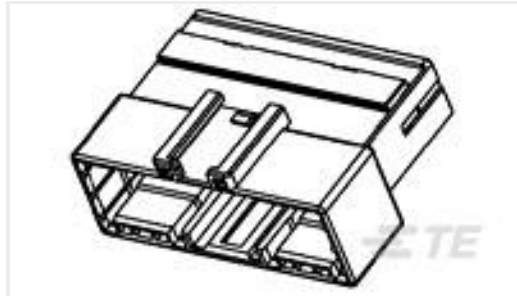
Customers Also Bought



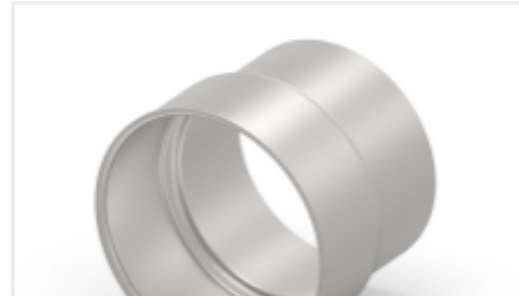
TE Part #9-966140-6
MESSERLEISTE 21P



TE Part #1987001-4
4P HV100 REC CON, SMD, Au, w/o
P&P, REEL



TE Part #936154-1
090III 22P CAP ASSY



TE Part #2307011-4
STEEL,FERRULE,8MM HV,90 DEG,
50SQMM



TE Part #2328073-2
HV 8MM; DEEP DRAWN SOCKET 90
DEG. ASSEMB



TE Part #2341055-2
SEAL RETAINER,ASSY, HVA280 2PHI



TE Part #2343612-2
SHIELDING SLEEVE,90DEG



TE Part #2350495-2
HVA280 inner ferrule



TE Part #7-2355198-5
HVP800 2P HEADER ASSY



TE Part #2361027-1
PLUG ASSY, KEY A, CPA, HVA280-
2PHI, V0

Documents

Product Drawings

[250 FASTON,TAB,PCB,SPPB](#)

English

CAD Files

[3D PDF](#)

[3D](#)

Customer View Model

[ENG_CVM_CVM_216842-4_J.2d_dxf.zip](#)

216842-4

Tab PCB Terminal, 6.3 mm [.248 in] Tab Width, 1.45 mm [.057 in] PCB Hole, Through Hole - Press-Fit, Silver Plating, Reel, FASTON 250



English

Customer View Model

[ENG_CVM_CVM_216842-4_J.3d_igs.zip](#)

English

Customer View Model

[ENG_CVM_CVM_216842-4_J.3d_stp.zip](#)

English

By downloading the CAD file I accept and agree to the [Terms and Conditions](#) of use.