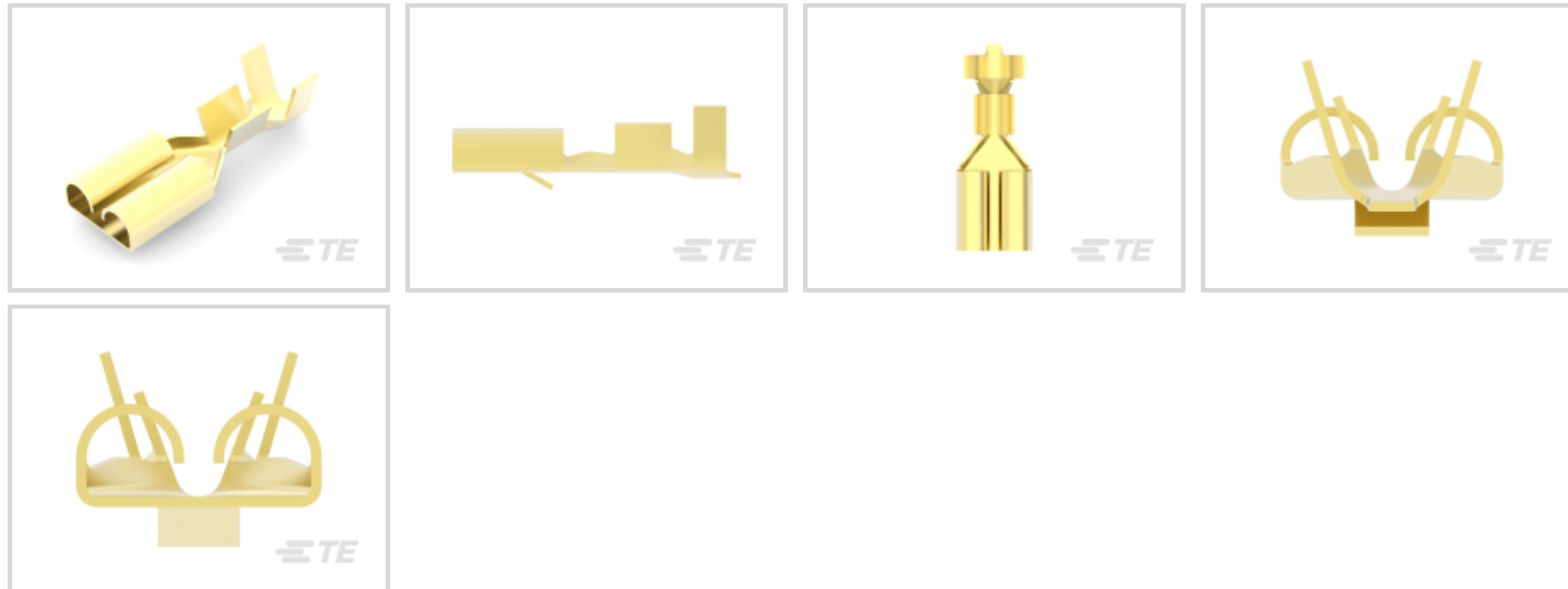




Terminals & Splices > Quick Disconnects



Quick Disconnect Terminal Type: **Receptacle**

Wire Size: **.82 – 2.08 mm²**

Mating Tab Width: **6.35 mm [.25 in]**

Mating Tab Thickness: **.81 mm [.032 in]**

Features

Product Type Features

Insertion Force	Normal
-----------------	--------

Configuration Features

Compatible With Wire & Cable Type	Discrete Wire
Connection Capacity	Single

Contact Features

Quick Disconnect Terminal Type	Receptacle
Mating Tab Width	6.35 mm [.25 in]
Mating Tab Thickness	.81 mm [.032 in]
Terminal Orientation	Straight
Contact Base Material	Brass
Terminal Plating Material	Unplated
Crimp Type	F-Crimp
Barrel Type	Open

Termination Features

--	--



Product Terminates To	Wire & Cable
-----------------------	--------------

Mechanical Attachment

Wire Insulation Support	With
Mating Retention Type	Locking Lance
Extraction Force	29.4 Newton

Dimensions

Product Length	19.1 mm [.751 in]
Compatible Insulation Diameter Range	3.1 – 4.1 mm [.12 – .16 in]
Terminal Material Thickness	.81 mm [.032 in]
Wire Size	.82 – 2.08 mm ²

Usage Conditions

Insulation Option	Uninsulated
Operating Temperature Range	-40 – 110 °C [-40 – 230 °F]

Packaging Features

Packaging Quantity	4000
Packaging Method	Strip/Reel

Product Compliance

[For compliance documentation, visit the product page on TE.com>](#)

EU RoHS Directive 2011/65/EU	Compliant
EU ELV Directive 2000/53/EC	Compliant
China RoHS 2 Directive MIIT Order No 32, 2016	No Restricted Materials Above Threshold
EU REACH Regulation (EC) No. 1907/2006	Current ECHA Candidate List: JAN 2025 (247) Candidate List Declared Against: JAN 2025 (247) Does not contain REACH SVHC
Halogen Content	Low Halogen - Br, Cl, F, I < 900 ppm per homogenous material. Also BFR/CFR/PVC Free
Solder Process Capability	Not applicable for solder process capability

Product Compliance Disclaimer

This information is provided based on reasonable inquiry of our suppliers and represents our current actual knowledge based on the information they provided. This information is subject to change. The part numbers that TE has identified as EU RoHS compliant have a maximum concentration of 0.1% by weight in homogenous materials for lead, hexavalent chromium, mercury, PBB, PBDE, DBP, BBP, DEHP, DIBP, and 0.01% for cadmium, or qualify for an exemption to these



limits as defined in the Annexes of Directive 2011/65/EU (RoHS2). Finished electrical and electronic equipment products will be CE marked as required by Directive 2011/65/EU. Components may not be CE marked. Additionally, the part numbers that TE has identified as EU ELV compliant have a maximum concentration of 0.1% by weight in homogenous materials for lead, hexavalent chromium, and mercury, and 0.01% for cadmium, or qualify for an exemption to these limits as defined in the Annexes of Directive 2000/53/EC (ELV). Regarding the REACH Regulation, the information TE provides on SVHC in articles for this part number is based on the latest European Chemicals Agency (ECHA) 'Guidance on requirements for substances in articles' posted at this URL: <https://echa.europa.eu/guidance-documents/guidance-on-reach>

Compatible Parts



KIT

REPRESENTATION ONLY

TE Part # 7-2150238-7
OCEAN_2.0_SPARE_PART_KIT-110F180F



TE Part # 2150238-1
OCEAN_2.0_Applicator-E-110F180F-REM



TE Part # 640841-1
BLADE REC 250 20-16AWG BR



TE Part # 63833-1
FF 187 REC 18-14AWG BR



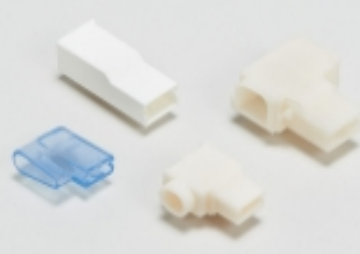
TE Part # 2150238-2
OCEAN_2.0_Applicator-E-110F180F-REA




REPRESENTATION ONLY

TE Part # 720725-1
DAHT 250 FASTIN-ON TAB REC 18-14 ASSY


Also in the Series | FASTIN-FASTON 250



Crimp Terminal Housings(195)



Insertion & Extraction Tools(2)



Quick Disconnects(213)

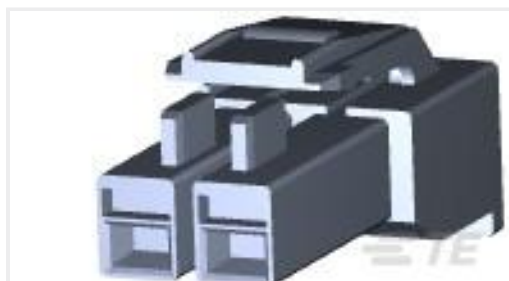
Customers Also Bought



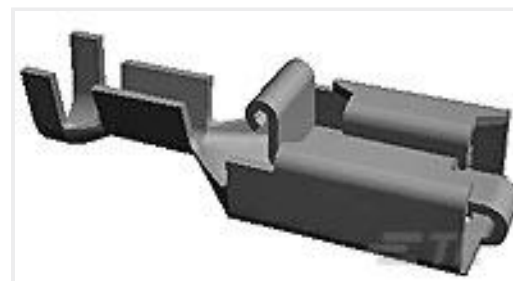
TE Part #1-172131-1
FF 250 CAP HSG 3P NYLON NAT



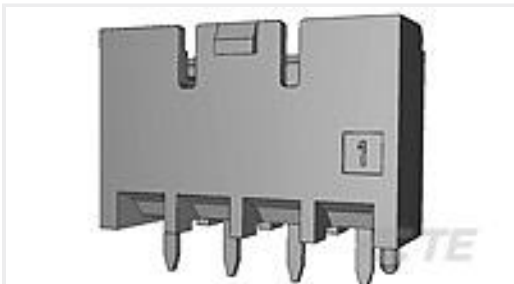
TE Part #175024-1
250 PL EX REC. 15-10AWG TPBR



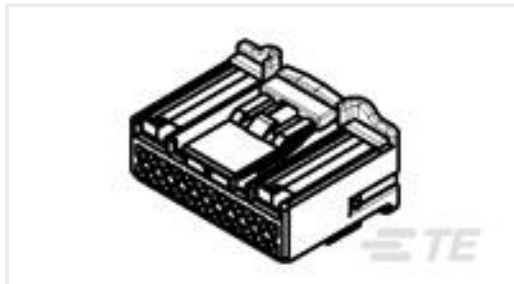
TE Part #176271-9
AMP UNIVERSAL POWER PLUG 2P



TE Part #880645-6
PL REC 1.0-2.5MM2 0.40 X 52.32 PTPBR



TE Part #3-1376383-4
5MM POWER KEY 3P HDR ASSY YELL



TE Part #1379668-1
24W PLUG HSG ASSY BLACK



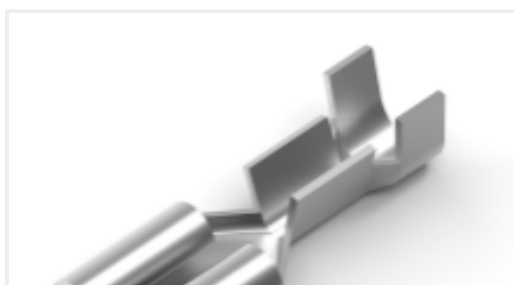
TE Part #1554296-1
GI CONN 2.5 PLUG HSG 5P LEVER SPECIAL



TE Part #1871867-1
GRACE INERTIA 6.2mm PITCH PLUG 3POS



TE Part #2295408-1
47POS MIXED MQS REC COD A



TE Part #170046-2
250 FASTON,REC.,16-14 AWG,TPBR

Documents

Product Drawings

[FF 250 REC 18-14AWG TPBR REREELING](#)

English

CAD Files

[3D PDF](#)

3D

Customer View Model

[ENG_CVM_CVM_170092-4_R_c-170092-4-r.2d_dxf.zip](#)

English

Customer View Model

[ENG_CVM_CVM_170092-4_R_c-170092-4-r.3d_igs.zip](#)

English

Customer View Model

[ENG_CVM_CVM_170092-4_R_c-170092-4-r.3d_stp.zip](#)

English

By downloading the CAD file I accept and agree to the [Terms and Conditions](#) of use.

Product Specifications



Application Specification

English

Instruction Sheets

[Instruction Sheet \(non U.S.\)](#)

Japanese

[Instruction Sheet \(non U.S.\)](#)

Japanese