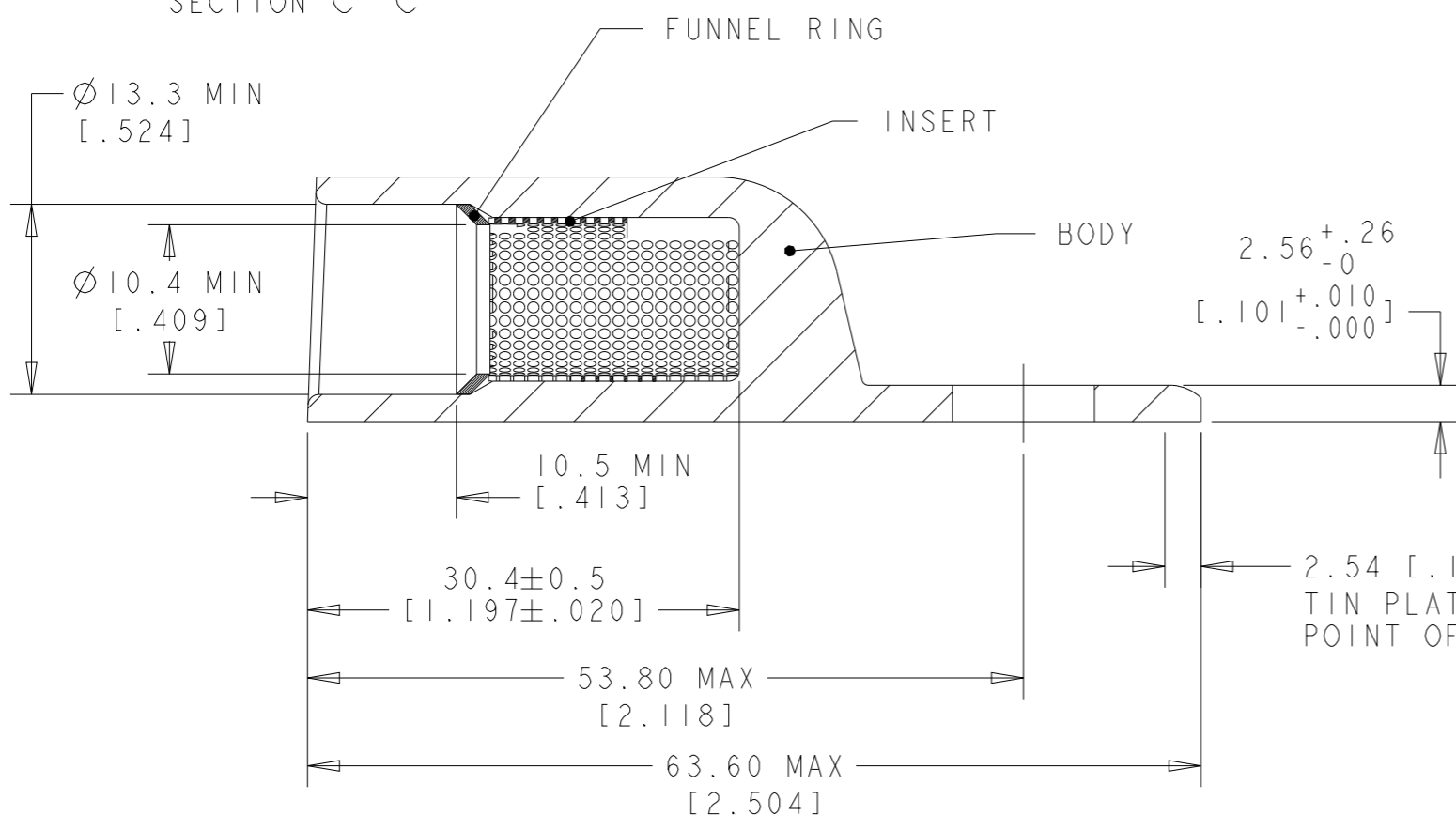


REVISIONS

P	LTR	DESCRIPTION	DATE	DWN	APVD
	A	MOD IF MARQUAGE/MODIFICATION MARKING	24JUN2010	JT	YP
	B	REV PER ECO-14-009458	26JUN2014	MGM	CT
	C	REVISED PER ECN-25-332962	16JUL2025	SP	JG

SECTION C-C



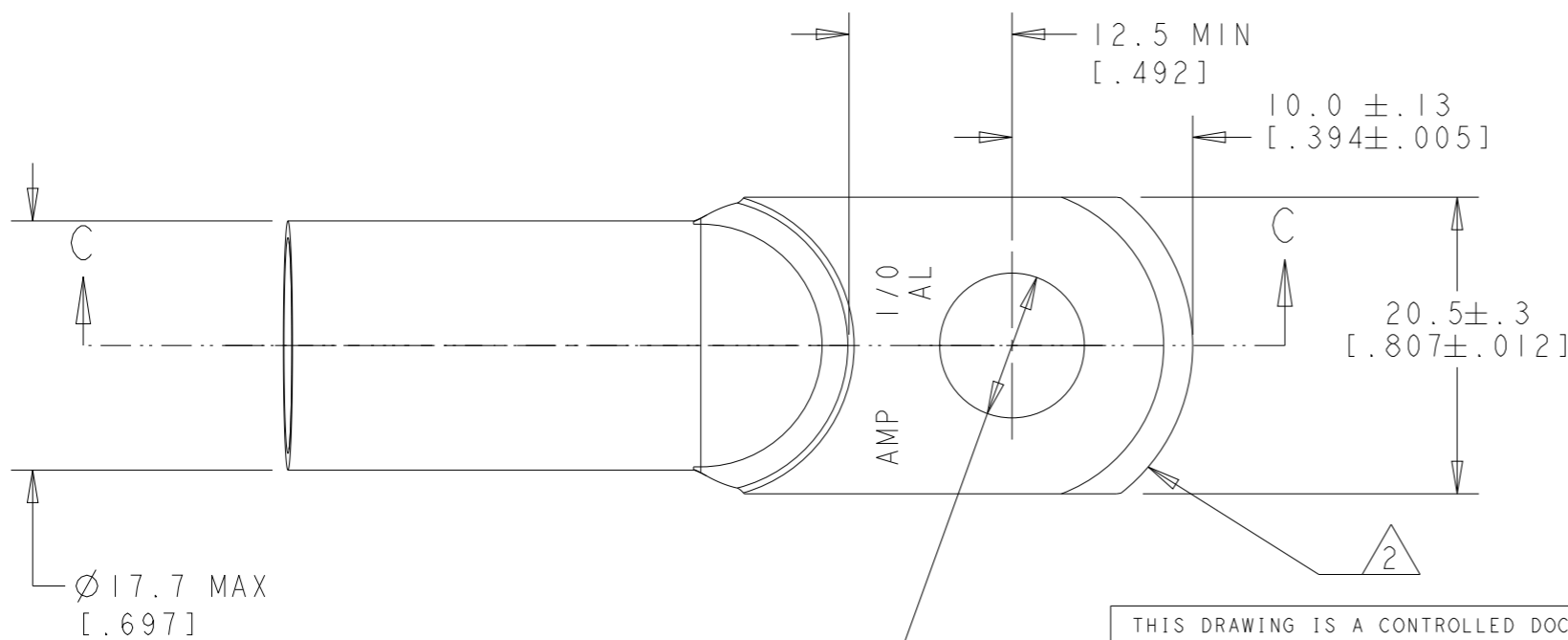
WARNING - THIS DOCUMENT CONTAINS TECHNOLOGY WHOSE EXPORT IS RESTRICTED BY THE EXPORT ADMINISTRATION REGULATIONS ("EAR") PURSUANT TO 15 C.F.R. PARTS 730-774. VIOLATIONS OF THE EAR ARE SUBJECT TO SEVERE CRIMINAL PENALTIES UNDER THE EXPORT CONTROL REFORM ACT, AS AMENDED (TITLE 50, U.S.C., SEC. 4801, ET SEQ.).

REFERENCE : 1577118-1

BODY: COPPER ASTM-B187 ANNEALED
TIN PLATE .00381 [.000150] MIN THICK
PER ASTM B545

INSERT & FUNNEL: BRASS ASTM B36
NICKEL PLATE SAE AMS QQ-N-290A,
DATED JULY 2000, .00254 [.000100] MIN THICK

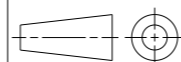
- 1 WIRE CMA: 83700 to 119500.
- 2 THE TONGUE RADIUS FEATURE IS NOT A TOOLING CONTROLLED DIMENSION AND MAY NOT BE A TRUE RADIUS.
- 3 WEIGHT: 56 grams.
- 4. SEE TE CONNECTIVITY INSTRUCTION SHEET 408-2281 FOR TOOLING AND CRIMP INSTRUCTIONS, FIGURE 2 FOR WIRE STRIPPING DETAIL.



HOLE Ø13 [.512] FOR STUD M12 OR 1/2

THIS DRAWING IS A CONTROLLED DOCUMENT.

DIMENSIONS:
mm [Inches]



MATERIAL
TABLE

TOLERANCES UNLESS OTHERWISE SPECIFIED:

0 PLC	±.
1 PLC	±0.5
2 PLC	±0.13
3 PLC	±0.013
4 PLC	±0.0001
ANGLES	±.

FINISH
TABLE

DWN J. DREUX 18FEB2004

CHK G. ROBERT 18FEB2004

APVD Y. PETRONIN 18FEB2004

PRODUCT SPEC

APPLICATION SPEC

WEIGHT

CUSTOMER DRAWING



TE Connectivity

NAME
SEALED COPALUM

SIZE CAGE CODE DRAWING NO

A300779 C-1577118

SCALE 2:1

SHEET 1 OF 1

REV C