

1452408-1 ✓ ACTIVE

AMP | MCON 1.2mm, MCON Interconnection System

TE Internal #: 1452408-1

58 Position, Red, Secondary Lock, PA 66 GF25, -40 – 140 °C [-40 – 284 °F], MCON Interconnection System

[View on TE.com >](#)



Automotive Parts > Automotive Connector Accessories > Automotive Connector Locks & Position Assurance



Number of Positions: **58**

Primary Product Color: **Red**

Connector & Contact Retention Accessory Type: **Secondary Lock**

Primary Product Material: **PA 66 GF25**

Operating Temperature Range: **-40 – 140 °C [-40 – 284 °F]**

Features

Product Type Features

Sealable	No
Connector & Contact Retention Accessory Type	Secondary Lock

Configuration Features

Number of Positions	58
---------------------	----

Body Features

Primary Product Color	Red
Primary Product Material	PA 66 GF25

Usage Conditions

Operating Temperature Range	-40 – 140 °C[-40 – 284 °F]
-----------------------------	----------------------------

Industry Standards

UL Flammability Rating	UL 94HB
------------------------	---------

Packaging Features

Packaging Method	Carton
Packaging Quantity	8000

Other

Serviceable	Yes
-------------	-----

Product Compliance



[For compliance documentation, visit the product page on TE.com>](#)

EU RoHS Directive 2011/65/EU	Compliant
EU ELV Directive 2000/53/EC	Compliant
China RoHS 2 Directive MIIT Order No 32, 2016	No Restricted Materials Above Threshold
EU REACH Regulation (EC) No. 1907/2006	Current ECHA Candidate List: JAN 2025 (247) Candidate List Declared Against: JAN 2025 (247) Does not contain REACH SVHC
Halogen Content	BFR/CFR/PVC Free, but Br/Cl >900 ppm in other sources.
Solder Process Capability	Not applicable for solder process capability

Product Compliance Disclaimer

This information is provided based on reasonable inquiry of our suppliers and represents our current actual knowledge based on the information they provided. This information is subject to change. The part numbers that TE has identified as EU RoHS compliant have a maximum concentration of 0.1% by weight in homogenous materials for lead, hexavalent chromium, mercury, PBB, PBDE, DBP, BBP, DEHP, DIBP, and 0.01% for cadmium, or qualify for an exemption to these limits as defined in the Annexes of Directive 2011/65/EU (RoHS2). Finished electrical and electronic equipment products will be CE marked as required by Directive 2011/65/EU. Components may not be CE marked. Additionally, the part numbers that TE has identified as EU ELV compliant have a maximum concentration of 0.1% by weight in homogenous materials for lead, hexavalent chromium, and mercury, and 0.01% for cadmium, or qualify for an exemption to these limits as defined in the Annexes of Directive 2000/53/EC (ELV). Regarding the REACH Regulation, the information TE provides on SVHC in articles for this part number is based on the latest European Chemicals Agency (ECHA) 'Guidance on requirements for substances in articles' posted at this URL: <https://echa.europa.eu/guidance-documents/guidance-on-reach>

Compatible Parts



TE Part # 1-2294806-1
58POS,MCON 1.2 CB,REC HSG,ASSY



TE Part # 7-1563172-7
58POS, MIXED,REC HSG,ASSY



TE Part # 9-1452400-9
CONNECTOR ASSY 154 POS.



TE Part # 2289748-8
58POS, MIXED,REC HSG,ASSY



TE Part # 4-1563172-4
58POS, MIXED,REC HSG,ASSY



TE Part # 9-1452415-2
58 POS MIXED, MCON CONNECTOR



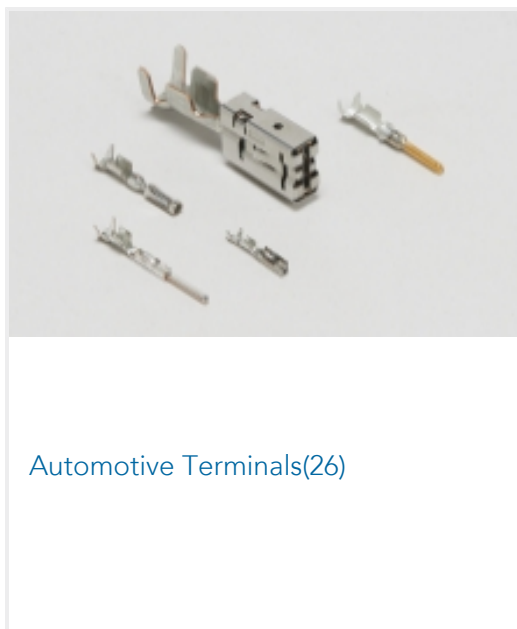
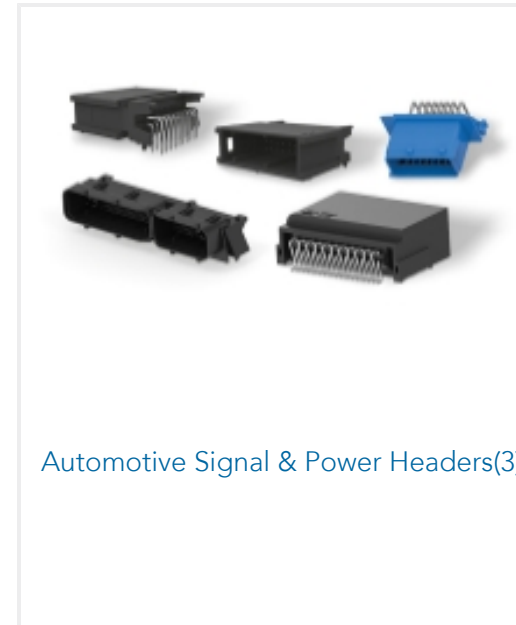
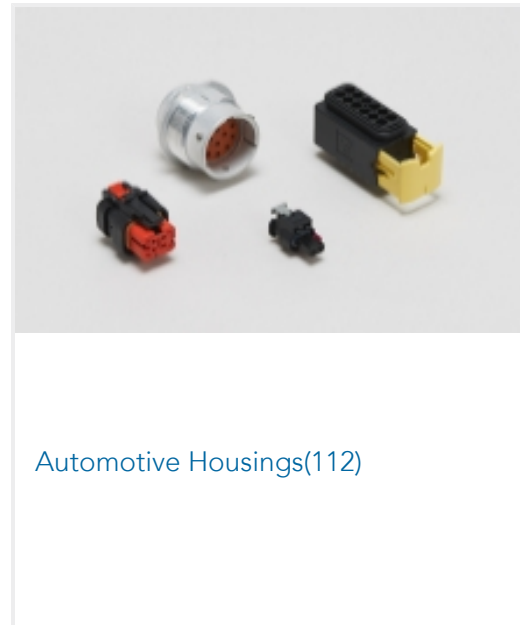
TE Part # 5-1563172-4
58POS, MIXED,REC HSG,ASSY



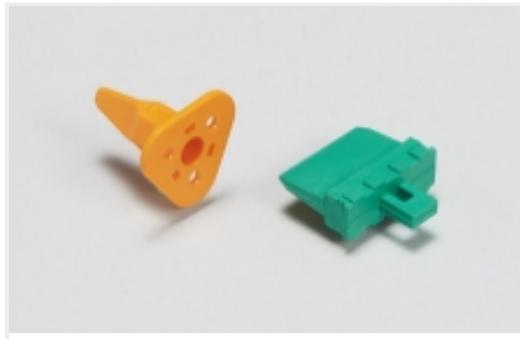
TE Part # 9-1452415-1
58 POS MIXED, MCON CONNECTOR



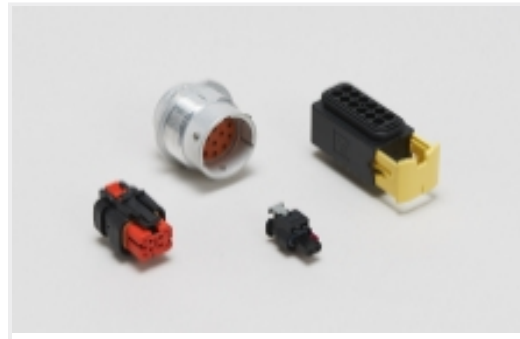
Also in the Series | MCON 1.2mm



Also in the Series | MCON Interconnection System



Automotive Connector Locks & Position Assurance(14)



Automotive Housings(112)



Automotive Seals & Cavity Plugs(12)



Automotive Signal & Power Connector Housings(112)



Other Automotive Connector Accessories(1)

Customers Also Bought



TE Part #HD36-24-31SE-059
PLG,31P,ALE, CBL CLMP BT, DRAIN, 16,S,MC



TE Part #184032-1
3 POS. PLUG ASSY, KEY A



TE Part #184042-1
1 POS. PLUG ASSY, KEY A



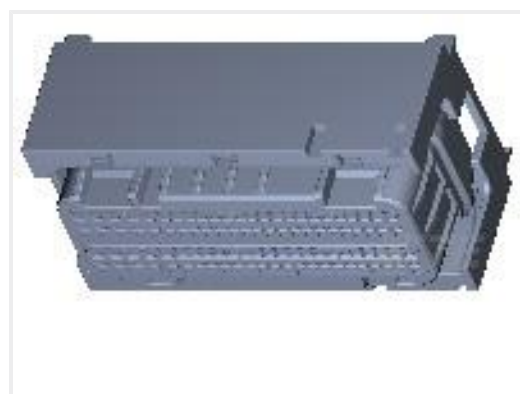
TE Part #1452389-1
COVER ASSY 96 POS.



TE Part #1452409-1
2-NDRY F.58P CONNECTOR



TE Part #1452416-1
58POS CONNECTOR COVER 180 ASSY



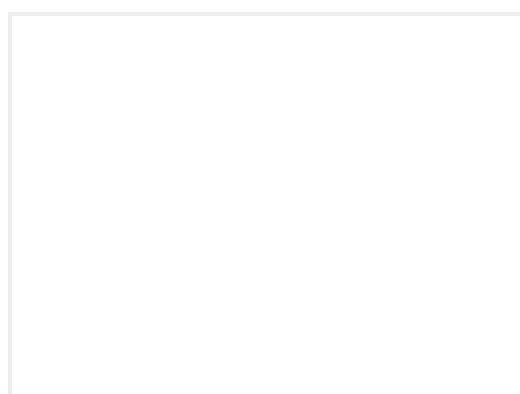
TE Part #9-1452423-9
96 POS. CONNECTOR ASSY



TE Part #2050780-2
COVER FOR 4P SENSOR CONNECTOR



TE Part #2050832-2
COVER FOR 3P SENSOR CONNECTOR



TE Part #9-1452931-9
76POS,MCON 1.2 CB,REC HSG,ASSY, SLD

Documents



Product Drawings

2-NDRY F58 POS. CONNECTOR

English

CAD Files

3D PDF

3D

Customer View Model

[ENG_CVM_CVM_1452408-1_B.2d_dxf.zip](#)

English

Customer View Model

[ENG_CVM_CVM_1452408-1_B.3d_igs.zip](#)

English

Customer View Model

[ENG_CVM_CVM_1452408-1_B.3d_stp.zip](#)

English

By downloading the CAD file I accept and agree to the [Terms and Conditions](#) of use.

Product Specifications

Appl. Spec. for 154 pos.Connector (96 pos. and 58 pos.)

English

Product Specification

English