

1241388-2 ✓ ACTIVE

AMP MCP | AMP MCP 2.8

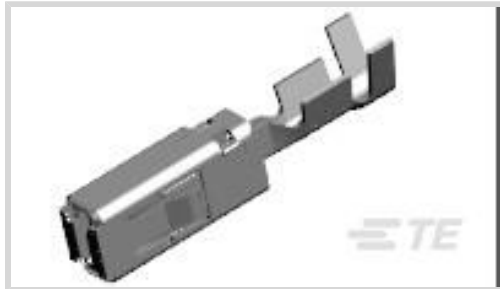
TE Internal #: 1241388-2

Receptacle Terminal, .5 – 1 mm² Wire, 2.8 mm [.11 in] Tab Width,
Gold (Au), .6 mm / .8 mm [.024 in / .031 in] Tab Thickness,
Unsealed, AMP MCP 2.8

[View on TE.com >](#)



Automotive Parts > Automotive Terminals > AMP MCP, RECEPTACLE AND TAB



Terminal Type: **Receptacle**

Wire Size: **.5 – 1 mm²**

Mating Tab Width: **2.8 mm [.11 in]**

Interface Plating: **Gold (Au)**

Primary Locking Feature: **Locking Lance**

[All AMP MCP, RECEPTACLE AND TAB \(105\)](#)

Features

Product Type Features

Receptacle Style	180°
Primary Locking Feature	Locking Lance
Sealable	No

Body Features

Terminal Seal Type	Unsealed
--------------------	----------

Contact Features

Typical Current Rating	15 A
Crimp Type	F-Crimp
Contact Size	2.8K
Contact Fabrication	Stamped & Formed
Wire Contact Termination Area Plating Material	Tin
Terminal Type	Receptacle
Mating Tab Width	2.8 mm [.11 in]
Interface Plating	Gold (Au)
Mating Tab Thickness	.6 mm, .8 mm [.024 in] [.031 in]

Termination Features

Termination Method to Wire & Cable	Crimp
------------------------------------	-------



Product Terminates To	Wire
-----------------------	------

Dimensions

Compatible Insulation Diameter Range	1.4 – 2.1 mm [.055 – .083 in]
--------------------------------------	-------------------------------

Wire Size	.5 – 1 mm ²
-----------	------------------------

Wire Size Search	.5 mm ² , .75 mm ² , 1 mm ²
------------------	--

Usage Conditions

Insulation Option	Uninsulated
-------------------	-------------

Operating Temperature (Max)	150 °C [302 °F]
-----------------------------	-----------------

Operating Temperature Range	-40 – 150 °C [-40 – 302 °F]
-----------------------------	-----------------------------

Operation/Application

Compatible With Wire Base Material	Copper
------------------------------------	--------

Conforms to Automation Guideline	Yes, DIN 72036 Automation of Wiring Harness Production, Version June 2024, Yes, KOMAX Guideline for automatic component insertion for electrical connections, Version 5.0 (March 2018)
----------------------------------	--

Industry Standards

Compatible With Agency/Standards Products	LV214
---	-------

Packaging Features

Packaging Method	Reel
------------------	------

Packaging Quantity	3500
--------------------	------

Other

Terminal Transmits	0 – 24 A (Low Power)
--------------------	----------------------

Product Compliance

[For compliance documentation, visit the product page on TE.com>](#)

EU RoHS Directive 2011/65/EU	Compliant
------------------------------	-----------

EU ELV Directive 2000/53/EC	Compliant
-----------------------------	-----------

China RoHS 2 Directive MIIT Order No 32, 2016	No Restricted Materials Above Threshold
---	---

EU REACH Regulation (EC) No. 1907/2006	Current ECHA Candidate List: JAN 2025 (247) Candidate List Declared Against: JAN 2025 (247) Does not contain REACH SVHC
--	---

Halogen Content	Low Halogen - Br, Cl, F, I < 900 ppm per
-----------------	--



homogenous material. Also BFR/CFR/PVC Free

Solder Process Capability

Not applicable for solder process capability

Product Compliance Disclaimer

This information is provided based on reasonable inquiry of our suppliers and represents our current actual knowledge based on the information they provided. This information is subject to change. The part numbers that TE has identified as EU RoHS compliant have a maximum concentration of 0.1% by weight in homogenous materials for lead, hexavalent chromium, mercury, PBB, PBDE, DBP, BBP, DEHP, DIBP, and 0.01% for cadmium, or qualify for an exemption to these limits as defined in the Annexes of Directive 2011/65/EU (RoHS2). Finished electrical and electronic equipment products will be CE marked as required by Directive 2011/65/EU. Components may not be CE marked. Additionally, the part numbers that TE has identified as EU ELV compliant have a maximum concentration of 0.1% by weight in homogenous materials for lead, hexavalent chromium, and mercury, and 0.01% for cadmium, or qualify for an exemption to these limits as defined in the Annexes of Directive 2000/53/EC (ELV). Regarding the REACH Regulation, the information TE provides on SVHC in articles for this part number is based on the latest European Chemicals Agency (ECHA) 'Guidance on requirements for substances in articles' posted at this URL: <https://echa.europa.eu/guidance-documents/guidance-on-reach>

Compatible Parts



TE Part # 1-1563331-1
10POS MIXED MQS REC COD A



TE Part # 1534053-1
MCP CONNECTOR 32P



TE Part # 284874-1
24 POS PLUG HOUSING ASSY



TE Part # 2305570-1
Strip Terminal Cutter-Side Feed-No Crimp



TE Part # 1534399-1
MCP CONNECTOR 32P



TE Part # 963294-1
SINGLE WIRE SEAL INSULATION DI

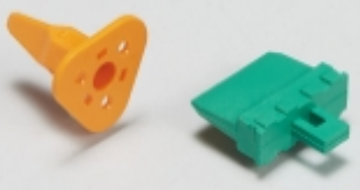


TE Part # 1534399-2
32POS,MIXED,HEADER ASSY, TURNED SLIDE




TE Part # 1897543-2
22POS MIXED MQS REC


Also in the Series | AMP MCP 2.8



Automotive Connector Locks & Position Assurance(5)



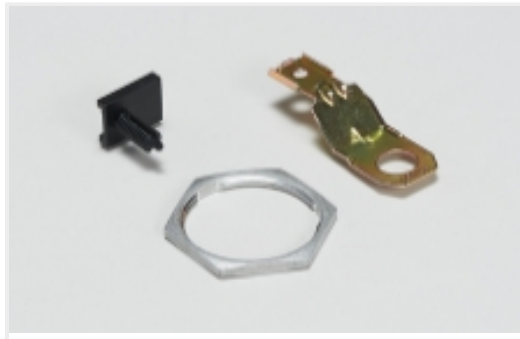
Automotive Housings(159)



Automotive Seals & Cavity Plugs(2)



Automotive Signal & Power Connector Housings(77)



Other Automotive Connector Accessories(1)

Customers Also Bought



TE Part #T1952160121-009
H16BPR-SGRHC-PG21-EMC-C



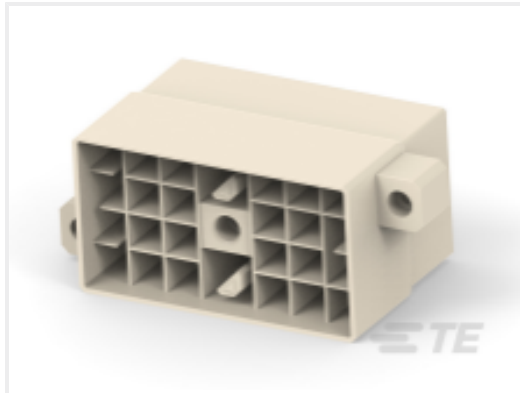
TE Part #254188-E
M12 MALE, A CODE, 4P, 17MM SMT



TE Part #T2040164201-000
HE-016-FC



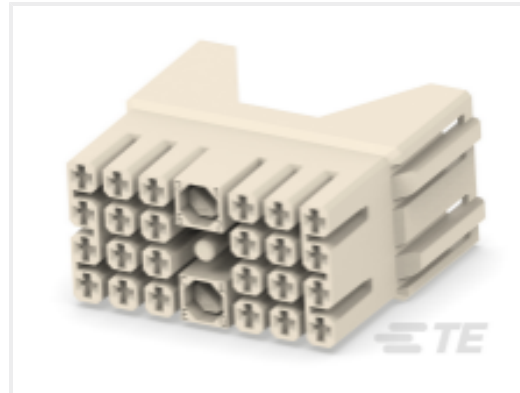
TE Part #212007-1
CONTACT PIN ASSY, SZ 8



TE Part #284873-1
24 POS CAP HOUSING ASS'Y



TE Part #6-1415537-5
SR6A6K24



TE Part #284874-1
24 POS PLUG HOUSING ASSY



TE Part #1-964296-3
TAB A 2.8x0.8 CONTACT CS SRC Au



TE Part #7-1106302-9
SCHELLENSET 10MM



TE Part #5-1102616-5
HIPK.16/40.SG.1.21G

Documents

Product Drawings

[AMP MCP 2.8K, CONTACT](#)

English

[AMP MCP 2.8K, CONTACT](#)

English

CAD Files

[Customer View Model](#)

[ENG_CVM_1241388-2_C6.3d_igs.zip](#)



English

Customer View Model

[ENG_CVM_1241388-2_C6.3d_stp.zip](#)

English

Customer View Model

[ENG_CVM_1241388-2_C6.2d_dxf.zip](#)

English

[3D PDF](#)

English

By downloading the CAD file I accept and agree to the [Terms and Conditions](#) of use.

Product Specifications

[Application Specification](#)

German

[Application Specification](#)

German

[Application Specification](#)

English