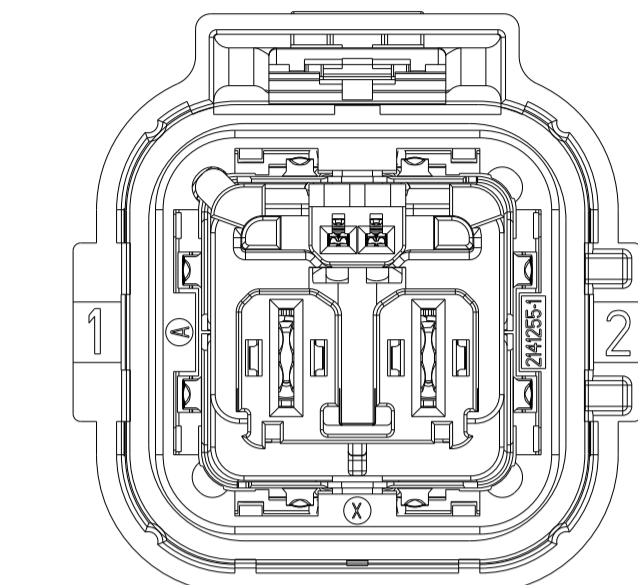
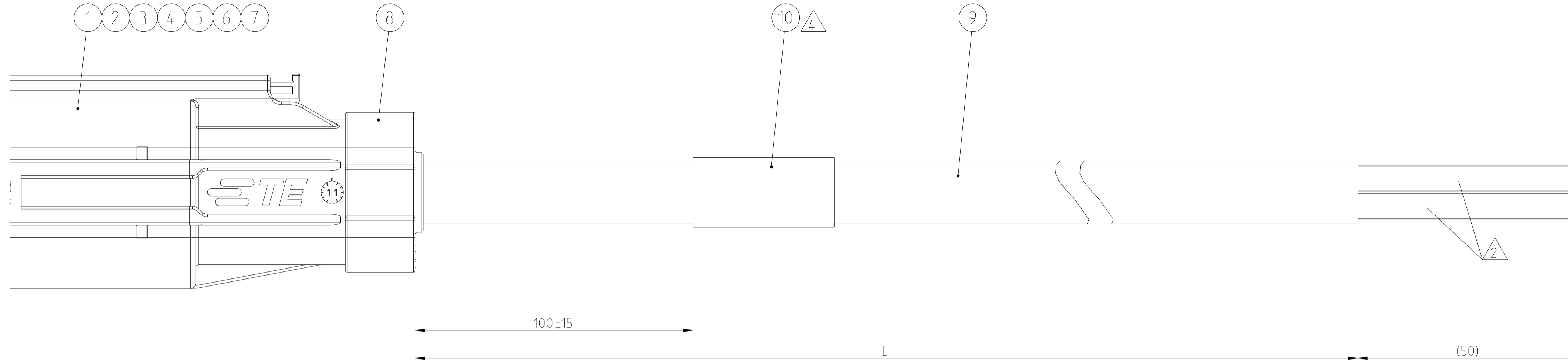


THE DRAWING SHOWS THE 2-DIMENSIONAL REFERENCE COMPONENT CONDITION OF THE ASSEMBLY TO IDENTIFY AND SPECIFY THE NECESSARY DIMENSIONS ONLY. THE DELIVERED PARTS MAY DEVIATE FROM THE DRAWING REGARDING THE ORIENTATION AND POSITION OF EACH COMPONENT (e.g. SLACK CABLE), SO FAR THE FUNCTIONALITY IS NOT CONCERNED.

DIE ZEICHNUNG ZEIGT DEN 2-DIMENSIONALEN IDEALZUSTAND DES ZUSAMMENBAUTEILS BEZÜGLICH DER KOMPONENTEN ZUR IDENTIFIKATION UND SPEZIFIKATION DER NOTWENDIGEN DIMENSIONEN. HINSICHTLICH DER ORIENTIERUNG UND DER LAGE DER KOMPONENTEN (Z.B. BIEGESCHLAPPE KABEL) KÖNNEN DIE GELIEFERTEN TEILE VON DER ZEICHNUNG ABWEICHEN, SOFERN DIE FUNKTIONALITÄT NICHT BEEINTRÄCHTIGT IST.

REVISIONS				
REV.	DATE	BY	CHK.	APPV.
G1	02SEP2020	DS	JJ	
G2	01MAR2021	DS	JF	
H	20JUL2021	DS	JT	
H1	03JUL2023	DS	JK	



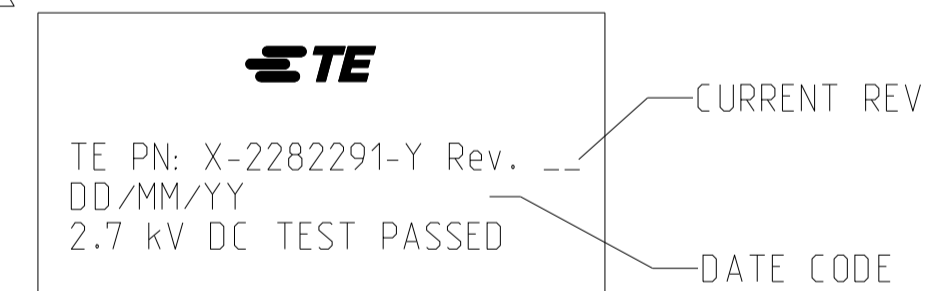
WIRING SCHEDULE:

CAVITY-NO.	WIRE COLOR
1	red
2	black

LENGTH SCHEDULE:

SUPERSEDED BY	TE PART NO.	REV.	LENGTH L [mm]	TOL. [mm]	CODING
-	1-2282291-1	H	1000	+30	A
-	1-2282291-2	H	2000	+35	
-	1-2282291-3	H	3000	+40	
H1	1-2282291-5	H	4000	+50	
-	1-2282291-4	H	5000	+60	
H1	1-2282291-5	E	2500	+35	
-	1-2282291-7	D	6000	+65	
-	1-2282291-8	B	15000	+70	
-	1-2282291-9	B	20000	+75	
H1	6-2282291-2	H	1000	+30	F
-	6-2282291-2	H	2000	+35	
H1	6-2282291-5	H	3000	+40	
-	6-2282291-4	H	4000	+50	
-	6-2282291-5	H	5000	+60	

4 LABEL LEGEND:



NOTES

- 1 PACKAGING:  
ASSEMBLIES PACKED IN TE STANDARD BOXES.  
ACC. TO TE SPECIFICATION 107-18087; 107-18064.  
DAMAGED TO BE AVOIDED.
- 2 ELECTRICAL TEST ACCORDING TE SPECIFICATION 108-18857, CHAPTER 3.3.  
USE CURRENT REVISION ALWAYS.  
STRIPPED ONLY OUTER JACKET, BRAID AND INNER SHEATH.
- 3 TE PRODUCT SPECIFICATION:  
108-18718  
  
TE APPLICATION SPECIFICATION:  
114-18388 (MCP 6.3/4.8 K)  
114-94100
- 4 MANUFACTURING CODE:  
TE PART NO., CURRENT REV. LEVEL AND DATE CODE (DD.MM.YY),  
TO BE PRINTED ON LABEL (ITEM 11).  
LABEL TO BE APPLIED TO THE CABLE AFTER SUCCESSFUL ELECTRICAL TEST.

1	1	LABEL, HELLERMANN	10
-	-	POWER CABLE, 2x6 mm <sup>2</sup>	9
1	1	COVER, SEAL	8
1	1	SINGLE WIRE SEAL, AMP MCP 6.3/4.8K	7
2	2	SHIELDING, EMC	6
1	1	SHIELD CRIMP FERRULE, OUTSIDE	5
1	1	SHIELD CRIMP FERRULE, INNER	4
2	2	MCP 6.3/4.8 K	3
1	-	2 POS, AMP MCP 6.3/4.8K, REC HSG. ASSY, CODE F	2
-	1	2 POS, AMP MCP 6.3/4.8K, REC HSG. ASSY, CODE A	
1	1	2 POS, MIXED, REC HSG. ASSY	1
QTY	QTY	DESCRIPTION	ITEM NO.
6-X	1-X		
-	-	WEIGHT OF EACH ASSY NO. (g)	

DIMENSIONS: MASSENHEITEN: mm		TOLERANCES UNLESS OTHERWISE SPECIFIED: ALLE DIMENSIONEN	
0 PLC	±	1 PLC	±
2 PLC	±	3 PLC	±
4 PLC	±	ANGLES/WINKEL	±
FINISH/OBERFLÄCHE/FARBE		WEIGHT GEWICHT	
-		-	
MATERIAL		CUSTOMER DRAWING	
-		-	

TOLERANCING EN ISO 8015  
TOLERIERUNG EN ISO 8015

DIESE ZEICHNUNG IST EIN KONTROLLIERTES DOKUMENT. BEMASSUNGEN UND TOLERANZEN GEMAESS GPS (ISO STANDARDS).

THIS DRAWING IS A CONTROLLED DOCUMENT. DIMENSIONING AND TOLERANCING PER GPS (ISO STANDARDS).

APV: M. Zellch 02JUN2014  
CHK: A. Bretschki 02JUN2014  
APV: M. Folk 03JUN2014

TE Connectivity

NAME: 2 POS.HVA.630-2PHM PIGTAIL.HYB ASSY

SIZE: A | CAGE CODE: 00779 | DRAWING NO: 2282291 | RESTRICTED TO: NUR FÜR: -

SCALE: 2:1 | SHEET: 1 OF 1 | REV: H1