



Press Fit Pin

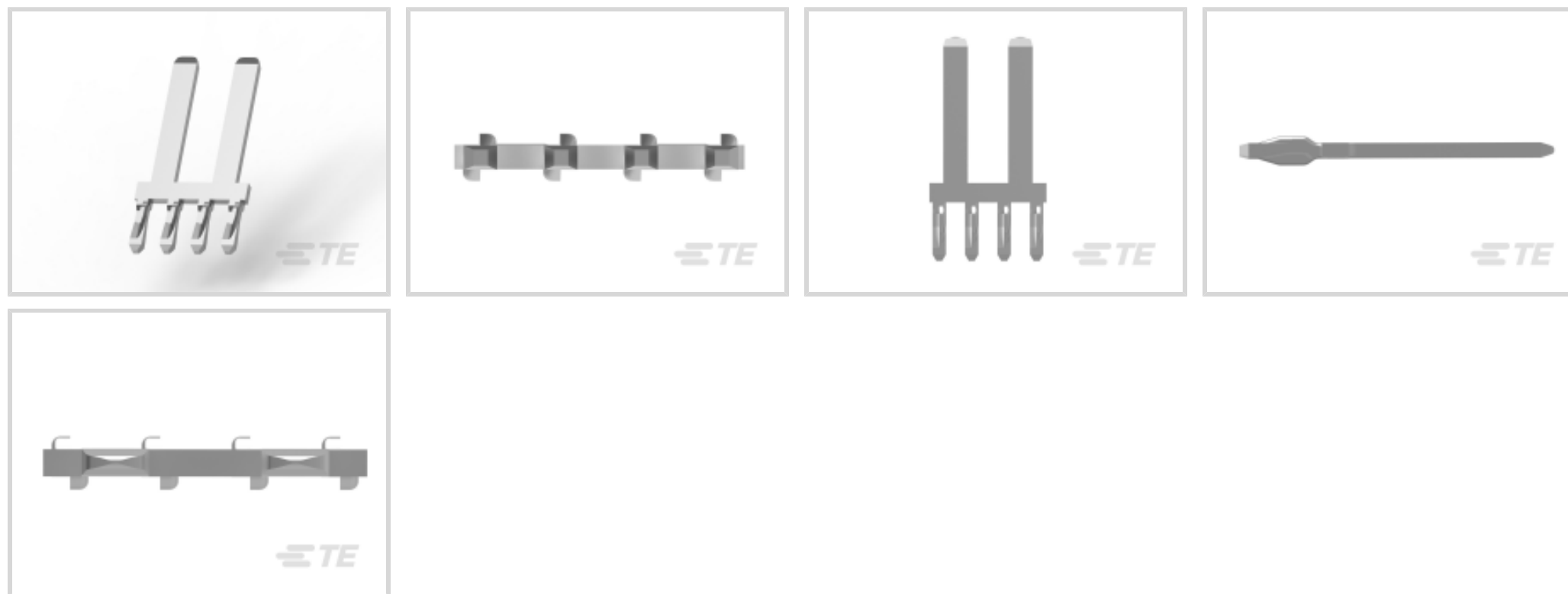
TE Internal #: 1-1823233-2

Tab Terminal, 1.5 mm [.059 in] Tab Width, Tin (Sn), .6 mm [.023 in]

Tab Thickness, Terminates To Printed Circuit Board, Press Fit Pin

[View on TE.com >](#)

Automotive Parts > Automotive Terminals > PRESS FIT PIN TERMINALS



Terminal Type: **Tab**

Mating Tab Width: **1.5 mm [.059 in]**

Interface Plating: **Tin (Sn)**

Sealable: **No**

Mating Tab Thickness: **.6 mm [.023 in]**

[All PRESS FIT PIN TERMINALS \(60\)](#)

Features

Product Type Features

Sealable	No
----------	----

Contact Features

PCB Contact Termination Area Plating Material	Tin
Contact Size	1.5K
Contact Fabrication	Stamped & Formed
Terminal Type	Tab
Mating Tab Width	1.5 mm [.059 in]
Interface Plating	Tin (Sn)
Mating Tab Thickness	.6 mm [.023 in]

Termination Features

Termination Method to PCB	Through Hole - Press-Fit
Product Terminates To	Printed Circuit Board

Dimensions



PCB Hole Diameter	.94 mm[.037 in]
-------------------	-----------------

Tab Length	13.8 mm[.543 in]
------------	------------------

Usage Conditions

Insulation Option	Uninsulated
-------------------	-------------

Operating Temperature (Max)	125 °C[212 °F]
-----------------------------	----------------

Operating Temperature Range	-40 – 125 °C[-40 – 257 °F]
-----------------------------	----------------------------

Industry Standards

Compatible With Agency/Standards Products	IEC 664/664A (DIN VDE 0110)
---	-----------------------------

Packaging Features

Packaging Method	Reel
------------------	------

Packaging Quantity	40000
--------------------	-------

Other

Customer Preferred Contact	No
----------------------------	----

Terminal Transmits	0 – 24 A (Low Power)
--------------------	----------------------

Product Compliance

[For compliance documentation, visit the product page on TE.com>](#)

EU RoHS Directive 2011/65/EU	Compliant
------------------------------	-----------

EU ELV Directive 2000/53/EC	Compliant
-----------------------------	-----------

China RoHS 2 Directive MIIT Order No 32, 2016	No Restricted Materials Above Threshold
---	---

EU REACH Regulation (EC) No. 1907/2006	Current ECHA Candidate List: JAN 2025 (247) Candidate List Declared Against: JAN 2025 (247) Does not contain REACH SVHC
--	---

Halogen Content	Low Halogen - Br, Cl, F, I < 900 ppm per homogenous material. Also BFR/CFR/PVC Free
-----------------	---

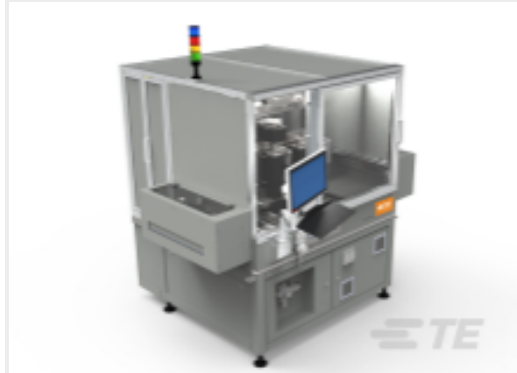
Solder Process Capability	Not applicable for solder process capability
---------------------------	--

Product Compliance Disclaimer

This information is provided based on reasonable inquiry of our suppliers and represents our current actual knowledge based on the information they provided. This information is subject to change. The part numbers that TE has identified as EU RoHS compliant have a maximum concentration of 0.1% by weight in homogenous materials for lead, hexavalent chromium, mercury, PBB, PBDE, DBP, BBP, DEHP, DIBP, and 0.01% for cadmium, or qualify for an exemption to these limits as defined in the Annexes of Directive 2011/65/EU (RoHS2). Finished electrical and electronic equipment products will be CE marked as required by Directive 2011/65/EU. Components may not be CE marked. Additionally, the part numbers that TE has identified as EU ELV compliant have a maximum concentration of 0.1% by weight in homogenous materials for lead, hexavalent chromium, and mercury, and 0.01% for cadmium, or qualify for an exemption to these limits

as defined in the Annexes of Directive 2000/53/EC (ELV). Regarding the REACH Regulation, the information TE provides on SVHC in articles for this part number is based on the latest European Chemicals Agency (ECHA) 'Guidance on requirements for substances in articles' posted at this URL: <https://echa.europa.eu/guidance-documents/guidance-on-reach>

Compatible Parts



TE Part # CAT-P550
Pin Insertion Machine P550



TE Part # CAT-P360
P360 Pin Insertion Machine



TE Part # 2688850-1
P300-C 4 HEAD



TE Part # CAT-P300
Pin Insertion Machine P300



TE Part # CAT-P280
P280 PIN INSERTION MACHINE



TE Part # CAT-P100
Pin Insertion Machine P100



TE Part # 2410420-3
EP PIN INSERTION MACHINE

Also in the Series | Press Fit Pin



Automotive Headers(1)



Automotive Housings(1)



Automotive Signal & Power Connector
Housings(1)

Customers Also Bought



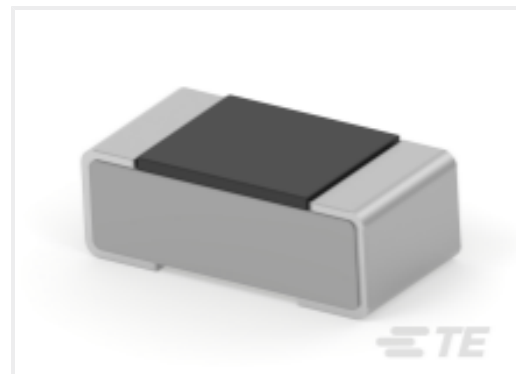
TE Part #CAT-AC853-T273
PRESS FIT PIN TERMINALS



TE Part #1376135-1
DYNAMIC D2100 HDR H ASSY 3P X



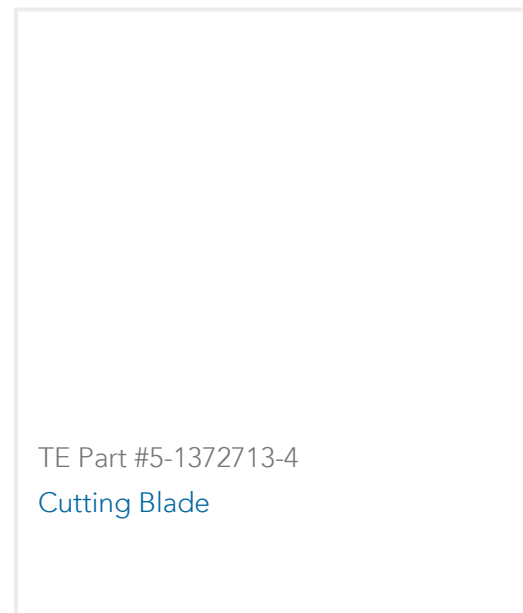
TE Part #CAT-SIGH262
Signal Header



TE Part #1-2176338-7
CRGCO 0402 470R 5%



TE Part #2317527-1
2X6POS,NANOMQS,HDR ASSY,
180DEG,SMD,COD A



TE Part #5-1372713-4
Cutting Blade

Documents

Product Drawings

[TAB 1.5X0.6](#)

English

CAD Files

Customer View Model

[ENG_CVM_CVM_1-1823233-2_A.2d_dxf.zip](#)

English

[3D PDF](#)

3D

Customer View Model

[ENG_CVM_CVM_1-1823233-2_A.3d_igs.zip](#)

English

Customer View Model

[ENG_CVM_CVM_1-1823233-2_A.3d_stp.zip](#)

English

By downloading the CAD file I accept and agree to the [Terms and Conditions](#) of use.

Product Specifications

[Flachstecker 1.5 x 0.6 mit ACTION PIN](#)

English

[Application Specification](#)

English