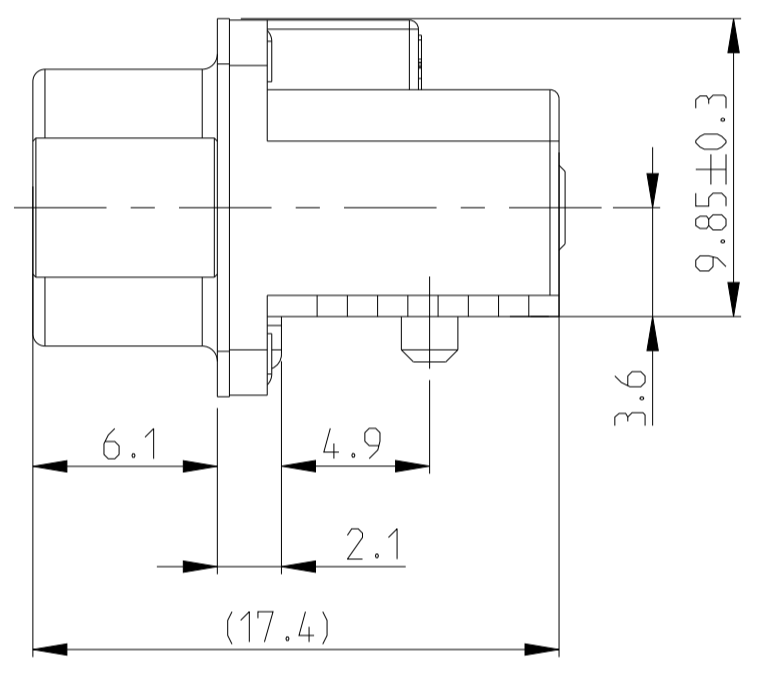
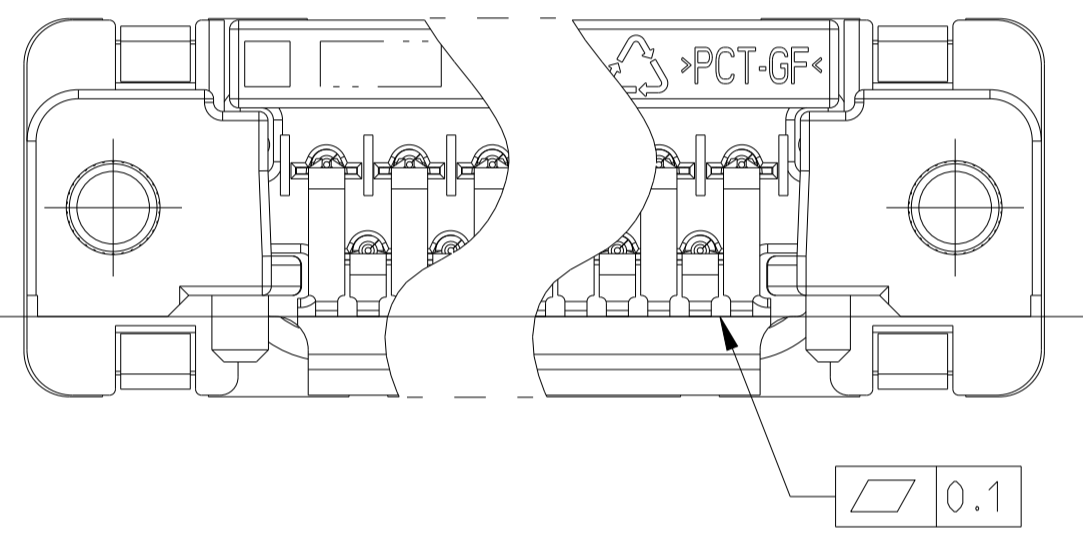
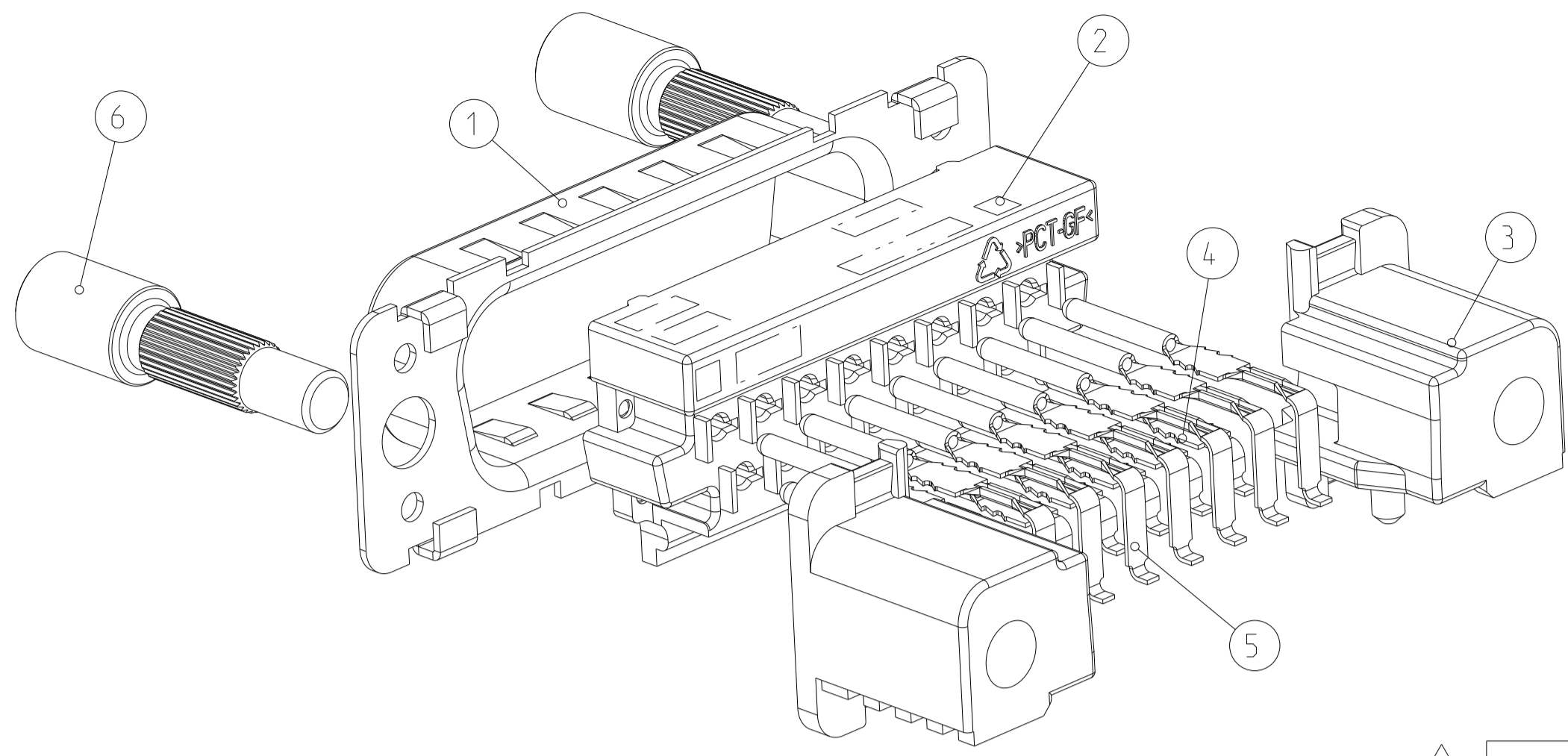
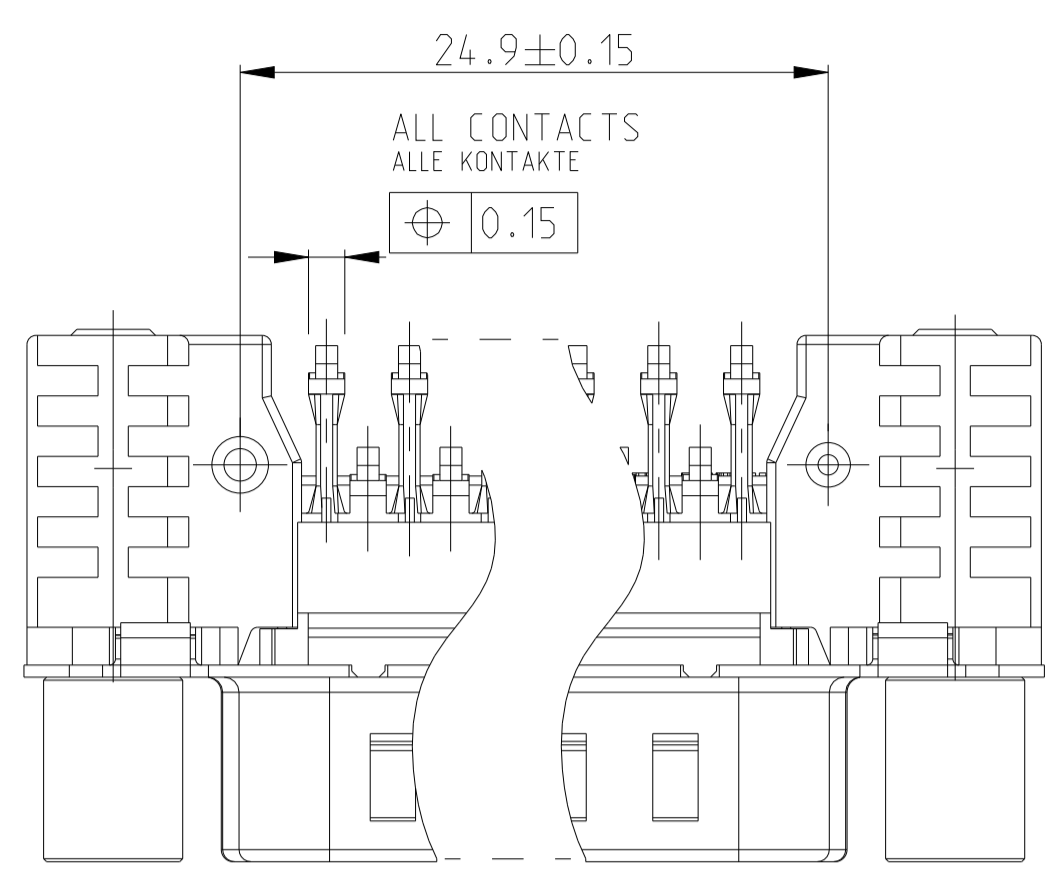
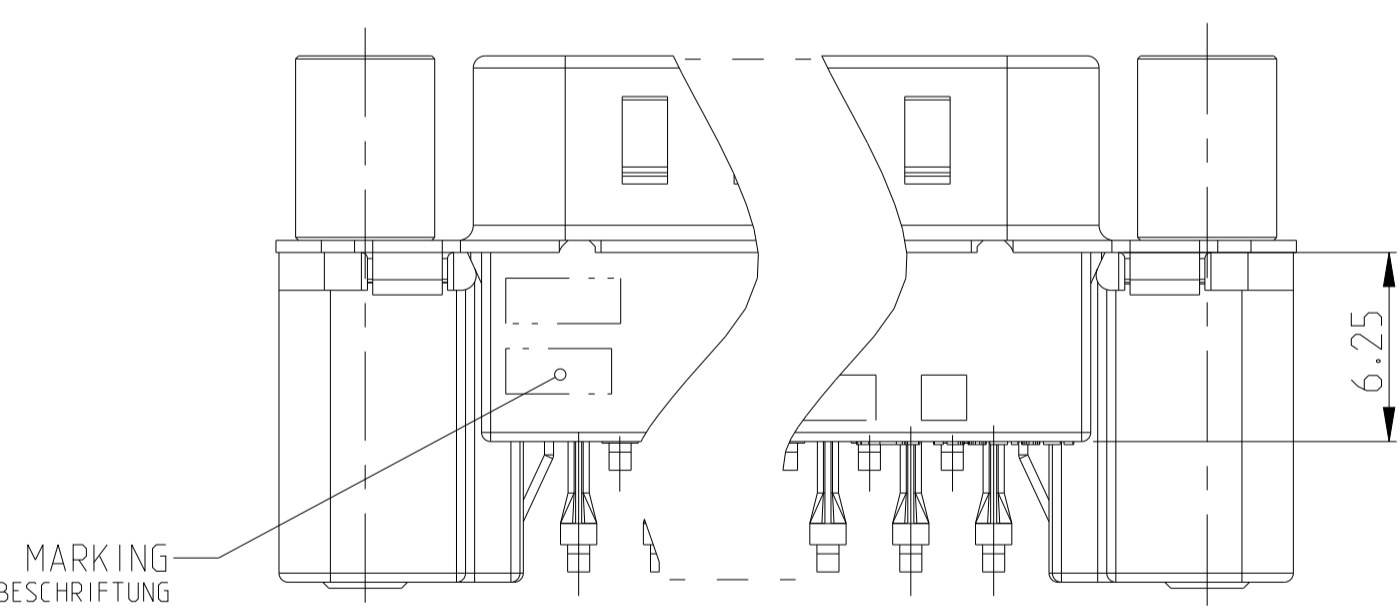
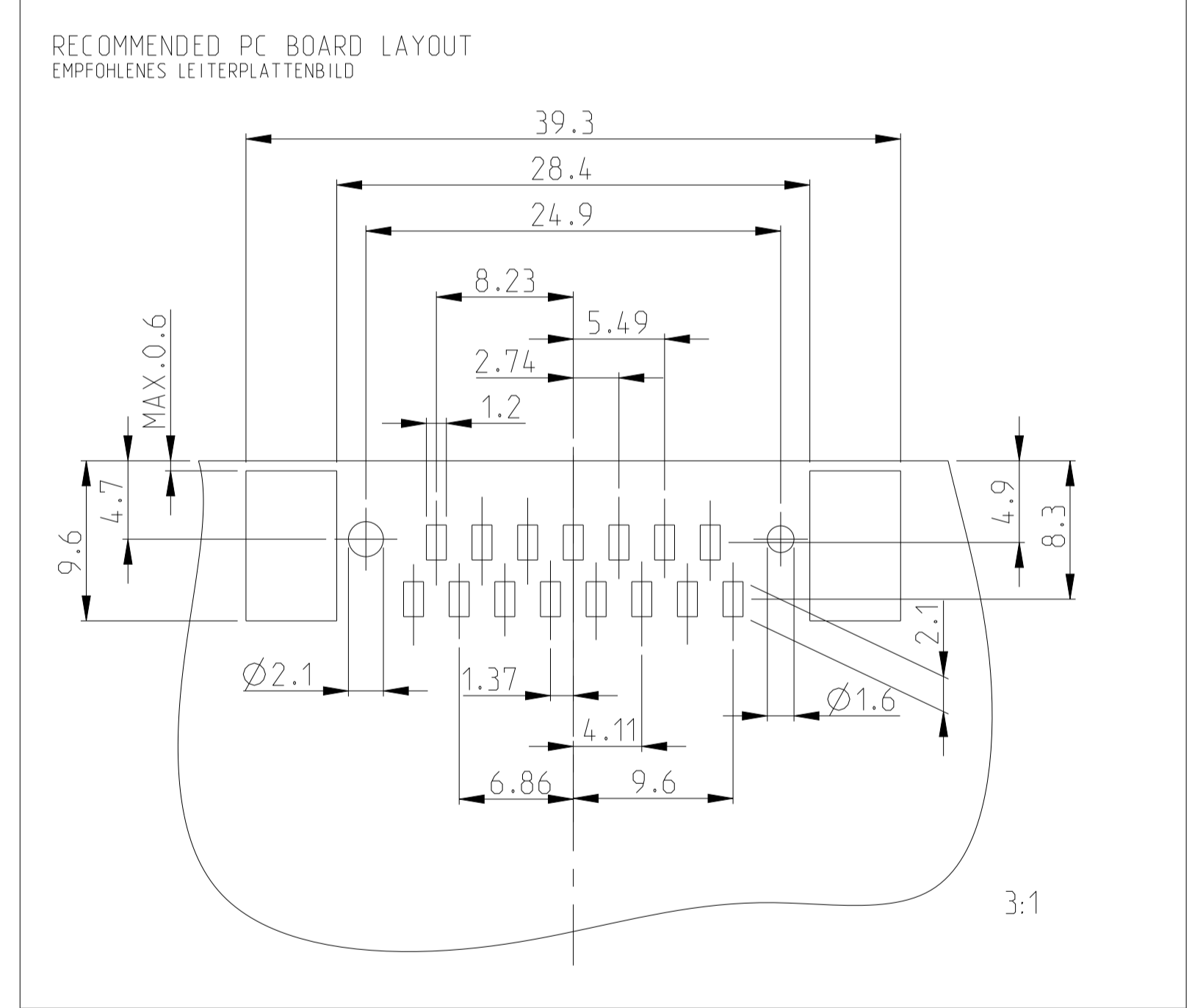


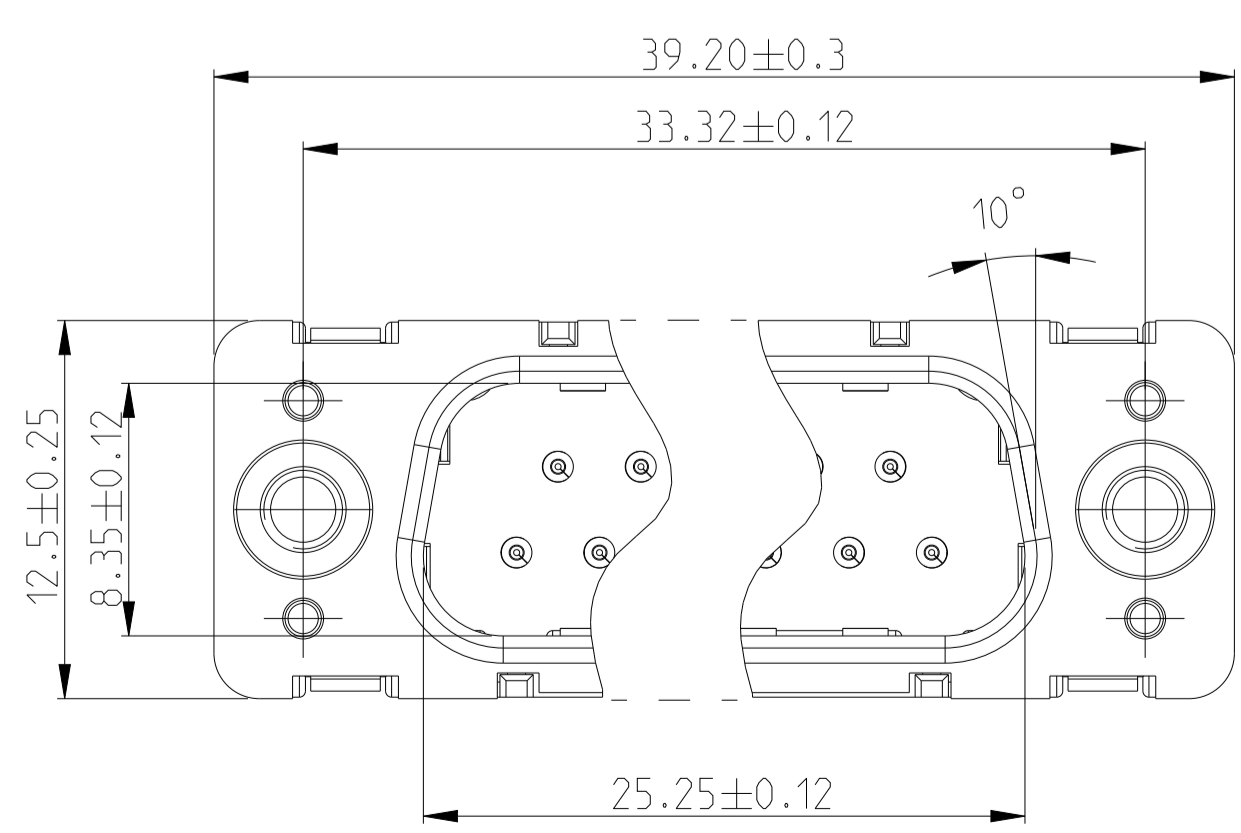
| PROJECT NO. |  | REVISIONS |                           | DATE      | DWN | APVD |
|-------------|--|-----------|---------------------------|-----------|-----|------|
| ESEMNO3028  |  | REV       | DESCRIPTION               |           |     |      |
| F           |  | 1         | REVISED PER ECO-13-012712 | 10SEP2013 | CJV | SLB  |
| F1          |  | 2         | ECR-21-104031             | 06OCT2021 | RR  | SZ   |



|             |   |                            |                   |
|-------------|---|----------------------------|-------------------|
| 5           | PIN HEADER, 15 POS., STUD WITH THREAD M3          | 4-1740197-2                | 4-1740197-5       |
| 5           | PIN HEADER, 15 POS., BRACKET WITH THREAD M3       | 2-1740197-2                | 2-1740197-5       |
| OBSOLETE    | PIN HEADER, 15 POS., STUD WITH THREAD UNC 4-40    | <del>3-1740197-2</del>     | 3-1740197-5       |
| OBSOLETE    | PIN HEADER, 15 POS., BRACKET WITH THREAD UNC 4-40 | <del>1-1740197-2</del>     | 1-1740197-5       |
| 5           | PIN HEADER, 15 POS., BRACKET WITH HOLE Ø3.1       | 0-1740197-2                | 0-1740197-5       |
| DESCRIPTION |   | SHELL PLATING: TIN OVER Ni | SHELL PLATING: Ni |



- REMARKS:
- 1 CONTACT AREA: min. 0.8 µm Au OVER 1.27 µm Ni, SOLDER AREA: 3-5 µm Sn OVER min. 1.27 µm Ni
  - 2 PACKAGING SEE SHEET 2
  - 3 CONNECTOR SUITABLE TO LEAD-FREE SMT SOLDER PROCESS
  - 4 TIN OVER NICKEL
  - 5 OBSOLETE
- BEMERKUNGEN:
- 1 KONTAKTBEREICH: min. 0.8 µm Au UEBER 1.27 µm Ni, LOETBEREICH: 3-5 µm Sn UEBER min. 1.27 µm Ni
  - 2 VERPACKUNGSART SIEHE BLATT 2
  - 3 STECKER GEEIGNET FÜR BLEIFREIES LOETEN
  - 4 ZINN UEBER NICKEL
  - 5 UBERHOLT



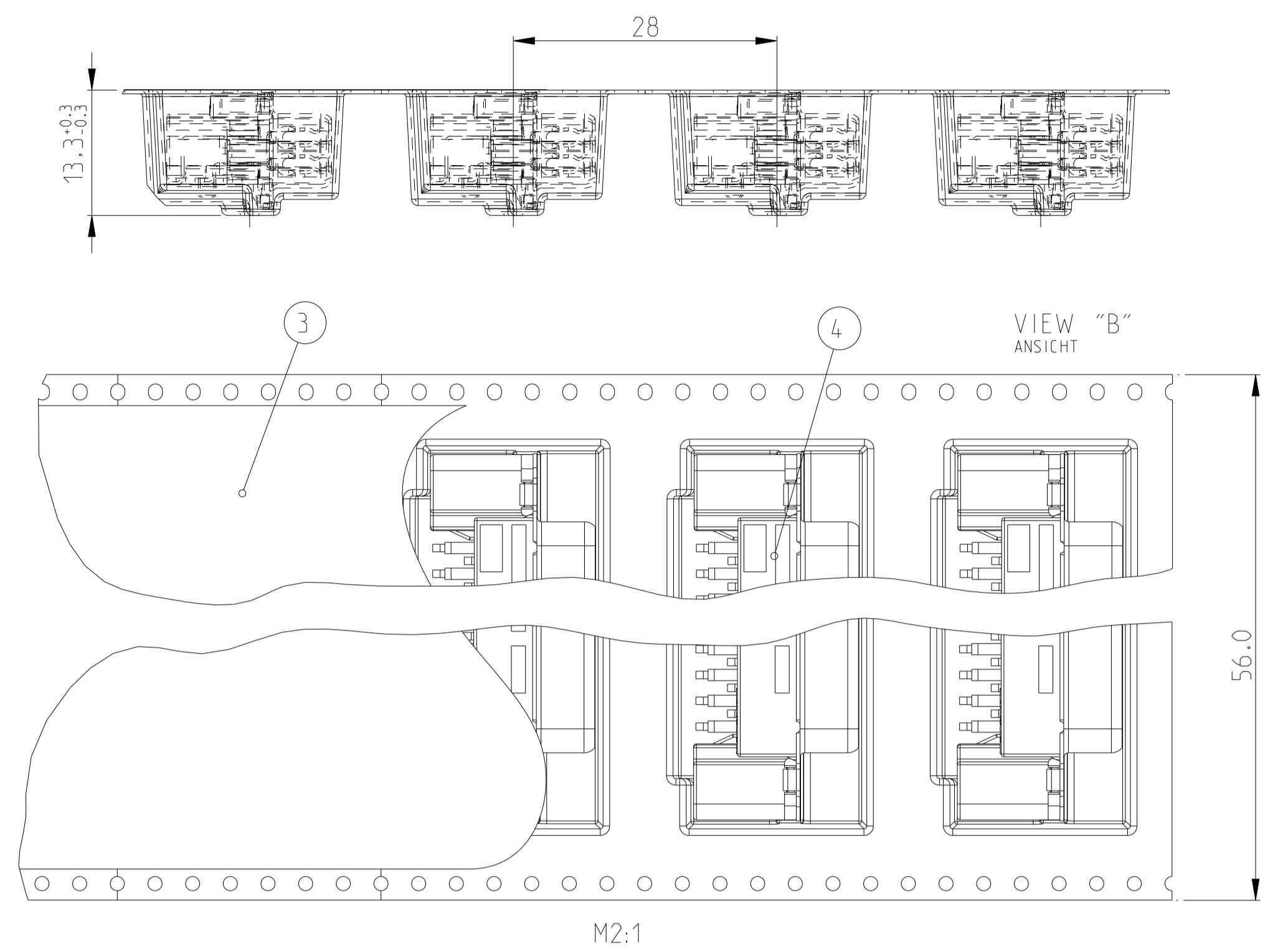
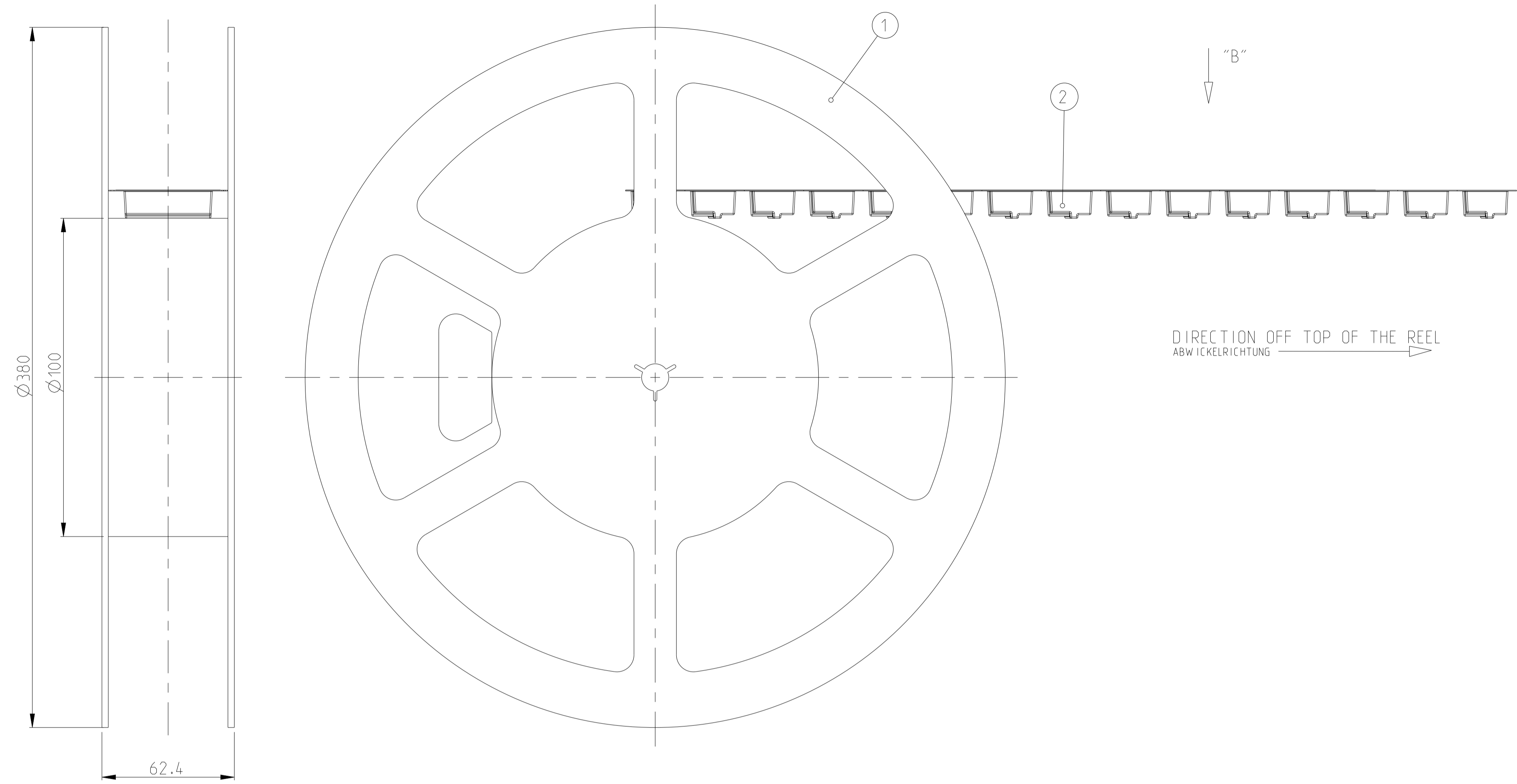
| POS. | QTY. | DESCRIPTION<br>BENENNUNG                                    | SURFACE<br>OBERFLÄCHE<br>COLOUR/FARBE | MATERIAL                |
|------|------|---|---------------------------------------|-------------------------|
| 6    | 2    | THREAD STUD<br>GEWINDEBOLZEN                                | NICKEL<br>NICKEL                      | STEEL<br>STAHL          |
| 5    | 8    | PIN CONTACT, SMD, LONG<br>STIFTKONTAKT, SMD, LANG           | 5                                     | CuMg                    |
| 4    | 7    | PIN CONTACT, SMD, SHORT<br>STIFTKONTAKT, SMD, KURZ          | 5                                     | CuMg                    |
| 3    | 2    | BRACKET, SMD, LEFT/RIGHT<br>WINKELSTUECK, SMD, LINKS/RECHTS | 5                                     | CAST METAL<br>DRUCKGUSS |
| 2    | 1    | PIN HOUSING<br>STIFTGEHAEUSE                                | BLACK<br>SCHWARZ                      | PCT-GF                  |
| 1    | 1    | SHELL<br>SCHIRMBLECH  | SEE TABLE<br>SIEHE TABELLE            | STEEL<br>STAHL          |

THIS DRAWING IS A CONTROLLED DOCUMENT.  
 DIESER ZEICHNUNGSDRUCK IST EIN DURCH UNS KONTROLLIERTES DOKUMENT.  
 ANFORDERUNG: FÜR DEN ZUGANG ZU DIESER ZEICHNUNG SIND VERBODEN.  
 ANFORDERUNG: FÜR DEN ZUGANG ZU DIESER ZEICHNUNG SIND VERBODEN.

OWNER: M. SCHWAIBSCHMIDT  
 DATE: 01 DEC 2004  
 NAME: HDP20 PIN HEADER, SMT, 15 POS.  
 HDP20 STIFTLISTE, SMT, 15 POL.  
 EUROSTYLE

SCALE: 4:1  
 SHEET: 1 OF 2  
 REV: F1

| REVISIONS |      |             |      |       |
|-----------|------|-------------|------|-------|
| P.        | LTN. | DESCRIPTION | DATE | APVD. |
| -         | -    | SEE SHEET 1 | -    | -     |



REMARKS:

- COVER TAPE WITH BLISTER BELT WELDED OR PASTED
  - BLISTER BELT, COVER AND TAPE ACC. TO DIN/IEC 286 PART 3
  - FIRST AND LAST RUNNING OF THE CARRIER TAPE ACC. TO DIN/IEC 286 PART 3
  - 7.0m BLISTERBELT AND 7.1m COVER TAPE, 225 LOOSE PIECE PARTS
- ⚠ OBSOLETE

BEMERKUNGEN:

- ABDECKBAND MIT BLISTERGURT VERSCHWEISST ODER VERKLEBT
  - BLISTERGURT, ABDECKBAND UND REEL NACH DIN/IEC 286 TEIL 3
  - VOR- UND NACHLAUF AM BLISTERGURT NACH DIN/IEC 286 TEIL 3
  - 7.0m BLISTERGURT UND 7.1m ABDECKBAND, 225 EINZELTEILE
- ⚠ UBERHOLT

| 1740197 | POS. | PARTS       |             |             |             |   | DESCRIPTION<br>BENENNUNG | SURFACE<br>OBERFLAECHE<br>COLOUR/FARBE | MATERIAL |
|---------|------|-------------|-------------|-------------|-------------|---|--------------------------|--|----------|
|         |      | 4-1740197-5 | 3-1740197-5 | 2-1740197-5 | 1-1740197-5 | 0-1740197-5                                 |                          |  |          |
| 4       | 225  | -           | -           | -           | -           | SUB-D PIN HEADER, 15 POS., STUD M3          | -                        | -                                      |          |
| 4       | -    | 225         | -           | -           | -           | SUB-D STIFTSTECKER, 15 POL., BOLZEN M3      | -                        | -                                      |          |
| 4       | -    | -           | 225         | -           | -           | SUB-D PIN HEADER, 15 POS., STUD UNC4-40     | -                        | -                                      |          |
| 4       | -    | -           | -           | 225         | -           | SUB-D STIFTSTECKER, 15 POL., BOLZEN UNC4-40 | -                        | -                                      |          |
| 4       | -    | -           | -           | -           | 225         | SUB-D PIN HEADER, 15 POS., M3               | -                        | -                                      |          |
| 4       | -    | -           | -           | -           | 225         | SUB-D STIFTSTECKER, 15 POL., M3             | -                        | -                                      |          |
| 4       | -    | -           | -           | -           | 225         | SUB-D PIN HEADER, 15 POS., UNC4-40          | -                        | -                                      |          |
| 4       | -    | -           | -           | -           | 225         | SUB-D STIFTSTECKER, 15 POL., UNC4-40        | -                        | -                                      |          |
| 3       | 7.1m | 7.1m        | 7.1m        | 7.1m        | 7.1m        | COVER BELT FOR BLISTER BELT                 | TRANSPARENT              | PET                                    |          |
| 2       | 7m   | 7m          | 7m          | 7m          | 7m          | BLISTER BELT                                | GREY/BLACK               | PS                                     |          |
| 1       | 1    | 1           | 1           | 1           | 1           | REEL  | GREY                     | PS                                     |          |

THIS DRAWING IS A CONTROLLED DOCUMENT. DIMENSIONS: mm. TOLERANCES UNLESS OTHERWISE SPECIFIED: 0 PLC #, 1 PLC #, 2 PLC #, 3 PLC #, 4 PLC #, ANGLES #°. MATERIAL: SEE TABLE S.TABELLE. FINISH: SEE TABLE S.TABELLE.

TE Connectivity logo and product name: HDP20 PIN HEADER, SMT, 15 POS. HDP20 STIFTLISTE, SMT, 15 POL. EUROSTYLE.

Customer Drawn: A1, Scale: 1:1, Sheet: 2 of 2, Rev: F1.