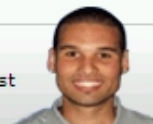


485893-6 Product Details

Have a Question?

Chat with a Product Information Specialist



485893-6

TE Internal Number: 485893-6

Active

[View 3D PDF](#)

Flexible Film Connectors

[Always EU RoHS/ELV Compliant \(Statement of Compliance\)](#)

Product Highlights:

- Connector
- Not Preloaded
- Housing Gender = Receptacle
- Accepts Contact Gender = Pin
- 2.54 mm Centerline

[View all Features](#)

Quick Links

- ▶ [Check Pricing & Availability](#)
- ▶ [Search for Tooling](#)
- ▶ [View Mating Products \(1\)](#)
- ▶ [View Contacts \(22\)](#)
- ▶ [Product Feature Selector](#)
- ▶ [Contact Us About This Product](#)

[Add to My Part List](#) [Request Sample](#) [Find Similar Products](#) [Buy Product](#)

Documentation & Additional Information

Product Drawings:

- [HOUSING,PIN,W/DETENT SLOTS, .100@22, FFC \(PDF, English\)](#)

Catalog Pages/Data Sheets:

- None Available

Product Specifications:

- [Connector, Flexible Flat Conductor Cable, .100 Inch ... \(PDF, English\)](#)

Application Specifications:

- [Flexible Flat Cable \(FFC\) Housings with Contact Cavi... \(PDF, English\)](#)

Instruction Sheets:

- [Extraction Tools \(PDF, English\)](#)

CAD Files: (CAD Format & Compression Information)

- [2D Drawing \(DXF, Version V\)](#)
- [3D Model \(IGES, Version V\)](#)
- [3D Model \(STEP, Version V\)](#)

[List all Documents](#)

Additional Information:

- [Product Line Information](#)

Related Products:

- [Tooling](#)
- [Mating Products \(1\)](#)
- [Contacts \(22\)](#)

Product Features (Please use the Product Drawing for all design activity)

Product Type Features:

- [Product Type](#) = Connector
- [Type of Connector](#) = Standard
- [Wire/Cable Type](#) = FFC
- [Mating Connector Lock](#) = With
- [Mating Connector Lock Type](#) = Detent Windows
- [Mating Polarization](#) = With
- [Mounting Ears](#) = Without
- [Flame Retardant](#) = Yes
- [Color](#) = Black
- [Comment](#) = Use Extraction Tool No. 91092-1 for round wire contacts.

Mechanical Attachment:

- [Panel Attachment](#) = Without

Body Related Features:

- [Centerline \(mm \[in\]\)](#) = 2.54 [0.100]
- [Number of Positions](#) = 8
- [Number of Rows](#) = Single

Contact Related Features:

- [Preloaded](#) = No
- [Accepts Contact Gender](#) = Pin

Housing Related Features:

- [Housing Gender](#) = Receptacle
- [Housing Material](#) = Thermoplastic - GF
- [UL Flammability Rating](#) = UL 94V-0

Industry Standards:

- [RoHS/ELV Compliance](#) = RoHS compliant, ELV compliant
- [Lead Free Solder Processes](#) = Not relevant for lead free process
- [RoHS/ELV Compliance History](#) = Always was RoHS compliant

Conditions for Usage:

- [Applies To](#) = Cable

Other:

- [Brand](#) = AMP

BOOKMARK

Corporate Information

[Who We Are](#)
[Investors](#)
[News Room](#)
[Supplier Portal](#)
[Careers](#)

Quick Links

[Check Distributor Inventory](#)
[Cross Reference](#)
[Find Documents & Drawings](#)
[Product Compliance Support Center](#)
[Site Map](#)

Customer Support

[Email or Chat with Us](#)
[Find a Phone Number](#)
[Search Knowledge Base](#)
[Manage Your Account](#)

Sign up for our eNewsletter

Enter your email address

Follow us on: