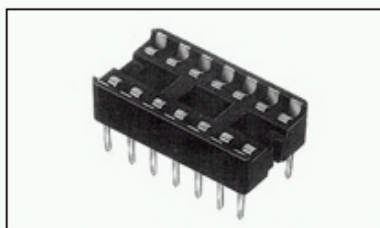
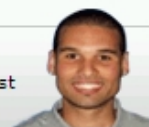


## 1-1825376-3 Product Details

### Have a Question?

Chat with a Product Information Specialist



1-1825376-3

TE Internal Number: 1-1825376-3

 Active

### DIP Sockets

 [Always EU RoHS/ELV Compliant \(Statement of Compliance\)](#)

#### Product Highlights:

- Socket Style = Standard
- Through Hole Contact Termination Type
- 2.54 mm Centerline
- Row-to-Row Spacing = 15.49 mm
- 40 Positions

[View all Features](#)

### Quick Links

- ▶ [Check Pricing & Availability](#)
- ▶ [Search for Tooling](#)
- ▶ [Product Feature Selector](#)
- ▶ [Contact Us About This Product](#)

 [Add to My Part List](#)  [Request Sample](#)  [Find Similar Products](#)  [Buy Product](#)

### Documentation & Additional Information

#### Product Drawings:

- [DIP SOCKET ASSY, LADDER, DIPLOMATE, RET. LEAD .600 ...](#) (PDF, English)

#### Catalog Pages/Data Sheets:

- None Available

#### Product Specifications:

- None Available

#### Application Specifications:

- [DIPLOMATE DL \(Dual Leaf\) DIP Sockets](#) (PDF, English)

#### Instruction Sheets:

- None Available

#### CAD Files:

- None Available

#### Additional Information:

- [Product Line Information](#)

#### Related Products:

- [Tooling](#)

[List all Documents](#)

### Product Features (Please use the Product Drawing for all design activity)

#### Product Type Features:

- [Socket Style](#) = Standard
- Profile = Standard
- [Frame Style](#) = Ladder
- [Leg Style](#) = Retention
- Proprietary Name = DIPLOMATE DL
- Color = Black
- Qty./Tube = 10
- Qty. Tubes/Box = 100
- Product Series = Standard
- Comment = ONLY sockets with straight solder tails are recommended for automatic insertion.

#### Electrical Characteristics:

- Insulation Resistance (MΩ) = 10,000
- Contact Resistance (mΩ) = 30

#### Termination Related Features:

- [Termination Post Length \(mm \[in\]\)](#) = 3.05 [0.120]
- Solder Tail Contact Plating = Tin

#### Body Related Features:

- [Centerline \(mm \[in\]\)](#) = 2.54 [0.100]
- [Row-to-Row Spacing \(mm \[in\]\)](#) = 15.49 [0.610]
- [Number of Positions](#) = 40
- [Mount Style](#) = Vertical

#### Contact Related Features:

- [Contact Termination Type](#) = Through Hole
- [Contact Base Material](#) = Beryllium Copper
- [Contact Plating, Mating Area, Material](#) = Gold (30)
- [Contact Style](#) = Stamped + Formed
- [Mating Contact Type](#) = Dual Leaf

#### Housing Related Features:

- Housing Material = Thermoplastic - GF
- UL Flammability Rating = UL 94V-0

#### Configuration Related Features:

- [Height Above PC Board \(mm \[in\]\)](#) = 5.33 [0.210]

#### Industry Standards:

- [RoHS/ELV Compliance](#) = RoHS compliant, ELV compliant
- [Lead Free Solder Processes](#) = Wave solder capable to 240°C, Wave solder capable to 260°C, Wave solder capable to 265°C
- RoHS/ELV Compliance History = Always was RoHS compliant

#### Conditions for Usage:

- Temperature Range (°C) = 125

#### Operation/Application:

- Application = Production

#### Packaging Related Features:

- [Packaging Method](#) = Tube

#### Other:

- Brand = Tyco Electronics

 BOOKMARK   

### Corporate Information

[Who We Are](#)  
[Investors](#)  
[News Room](#)  
[Supplier Portal](#)  
[Careers](#)

### Quick Links

[Check Distributor Inventory](#)  
[Cross Reference](#)  
[Find Documents & Drawings](#)  
[Product Compliance Support Center](#)  
[Site Map](#)

### Customer Support

[Email or Chat with Us](#)  
[Find a Phone Number](#)  
[Search Knowledge Base](#)  
[Manage Your Account](#)

### Sign up for our eNewsletter

Enter your email address

Follow us on: 