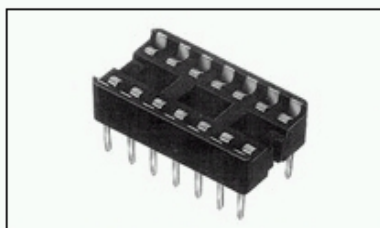
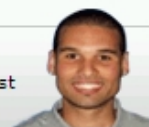


1-1825376-2 Product Details

Have a Question?

Chat with a Product Information Specialist



1-1825376-2

TE Internal Number: 1-1825376-2

 **Active**

DIP Sockets

 [Always EU RoHS/ELV Compliant \(Statement of Compliance\)](#)

Product Highlights:

- Socket Style = Standard
- Through Hole Contact Termination Type
- 2.54 mm Centerline
- Row-to-Row Spacing = 15.49 mm
- 28 Positions

[View all Features](#)

Quick Links

- ▶ [Check Pricing & Availability](#)
- ▶ [Search for Tooling](#)
- ▶ [Product Feature Selector](#)
- ▶ [Contact Us About This Product](#)

 [Add to My Part List](#)  [Request Sample](#)  [Find Similar Products](#)  [Buy Product](#)

Documentation & Additional Information

Product Drawings:

- [DIP SOCKET ASSY, LADDER, DIPLOMATE, RET. LEAD .600 ...](#) (PDF, English)

Catalog Pages/Data Sheets:

- None Available

Product Specifications:

- None Available

Application Specifications:

- None Available

Instruction Sheets:

- None Available

CAD Files:

- None Available

Additional Information:

- [Product Line Information](#)

Related Products:

- [Tooling](#)

[List all Documents](#)

Product Features (Please use the Product Drawing for all design activity)

Product Type Features:

- [Socket Style](#) = Standard
- Profile = Standard
- [Frame Style](#) = Ladder
- [Leg Style](#) = Retention
- Proprietary Name = DIPLOMATE DL
- Color = Black
- Qty./Tube = 15
- Qty. Tubes/Box = 100
- Product Series = Standard
- Comment = ONLY sockets with straight solder tails are recommended for automatic insertion.

Electrical Characteristics:

- Insulation Resistance (MΩ) = 10,000
- Contact Resistance (mΩ) = 30

Termination Related Features:

- [Termination Post Length \(mm \[in\]\)](#) = 3.05 [0.120]
- Solder Tail Contact Plating = Tin

Body Related Features:

- [Centerline \(mm \[in\]\)](#) = 2.54 [0.100]
- [Row-to-Row Spacing \(mm \[in\]\)](#) = 15.49 [0.610]
- [Number of Positions](#) = 28
- [Mount Style](#) = Vertical

Contact Related Features:

- [Contact Termination Type](#) = Through Hole
- [Contact Base Material](#) = Beryllium Copper
- [Contact Plating, Mating Area, Material](#) = Gold (30)
- [Contact Style](#) = Stamped + Formed
- [Mating Contact Type](#) = Dual Leaf

Housing Related Features:

- Housing Material = Thermoplastic - GF
- UL Flammability Rating = UL 94V-0

Configuration Related Features:

- [Height Above PC Board \(mm \[in\]\)](#) = 5.33 [0.210]

Industry Standards:

- [RoHS/ELV Compliance](#) = RoHS compliant, ELV compliant
- [Lead Free Solder Processes](#) = Wave solder capable to 240°C, Wave solder capable to 260°C, Wave solder capable to 265°C
- RoHS/ELV Compliance History = Always was RoHS compliant

Conditions for Usage:

- Temperature Range (°C) = 125

Operation/Application:

- Application = Production

Packaging Related Features:

- [Packaging Method](#) = Tube

Other:

- Brand = Tyco Electronics

 BOOKMARK   

Corporate Information

[Who We Are](#)
[Investors](#)
[News Room](#)
[Supplier Portal](#)
[Careers](#)

Quick Links

[Check Distributor Inventory](#)
[Cross Reference](#)
[Find Documents & Drawings](#)
[Product Compliance Support Center](#)
[Site Map](#)

Customer Support

[Email or Chat with Us](#)
[Find a Phone Number](#)
[Search Knowledge Base](#)
[Manage Your Account](#)

Sign up for our eNewsletter

Enter your email address

Follow us on: 