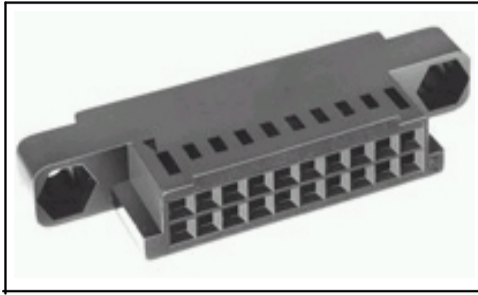


**Product Details for 88637 -9**



**88637 -9**

[Active](#)

**Flexible Film Connectors**

[RoHS Compliant \(Statement of Compliance\)](#)

**Product Highlights:**

- ? Housing
- ? 2.54 mm Centerline
- ? Connector Type = Standard
- ? Number of Positions = 18
- ? Number of Rows = Dual

[View all Features](#)

**Quick Links**

- [Check Pricing & Availability](#)
- [Search for Tooling](#)
- [View Mating Products \(2\)](#)
- [Product Feature Selector](#)
- [Contact Us About This Product](#)

**Documentation & Additional Information**

**Product Drawings:**

- ? [HOUSING,RCPT,DBL ROW / W DETENTS,.100@22,FFC](#) (PDF, English)

**Catalog Pages/Data Sheets:**

- ? None Available

**Product Specifications:**

- ? None Available

**Application Specifications:**

- ? None Available

**Instruction Sheets:**

- ? None Available

**CAD Files:** ([CAD Format & Compression Information](#))

- ? [3D Model](#) (STEP, Version AE)
- ? [3D Model](#) (IGES, Version AE)
- ? [2D Drawing](#) (DXF, Version AE)

[List all Documents](#)

**Additional Information:**

- ? [Product Line Information](#)

**Related Products:**

- ? [Tooling](#)
- ? [Mating Products \(2\)](#)

**Product Features** (Please use the Product Drawing for all design activity)

**Product Type Features:**

- ? [Product Type](#) = Housing
- ? [Connector Type](#) = Standard
- ? [Number of Positions](#) = 18
- ? [Mating Type](#) = Receptacle
- ? [Mating Connector Lock](#) = With
- ? [Mating Connector Lock Type](#) = Detent
- ? [Mating Polarization](#) = With
- ? [Mounting Ears](#) = With
- ? Flame Retardant = Yes
- ? Color = Black
- ? Comment = Housing sizes smaller than 20 position have only one detent.; Use Extraction Tool No. 91093 -1 for round wire contacts.

**Mechanical Attachment:**

- ? [Panel Attachment](#) = With

**Body Related Features:**

- ? [Centerline \(mm \[in\]\)](#) = 2.54 [0.100]
- ? [Number of Rows](#) = Dual

**Housing Related Features:**

- ? Housing Material = Thermoplastic
- ? Housing Flammability Rating = UL 94V -0

**Industry Standards:**

- ? [RoHS/ELV Compliance](#) = RoHS compliant, ELV compliant
- ? [Lead Free Solder Processes](#) = Not relevant for lead free process
- ? RoHS/ELV Compliance History = Always was RoHS compliant

**Conditions for Usage:**

- ? [Terminate To](#) = FFC Cable

**Other:**

- ? Brand = AMP